

TECHNICAL SPECIFICATIONS  
**HIAB X-DUO 088**

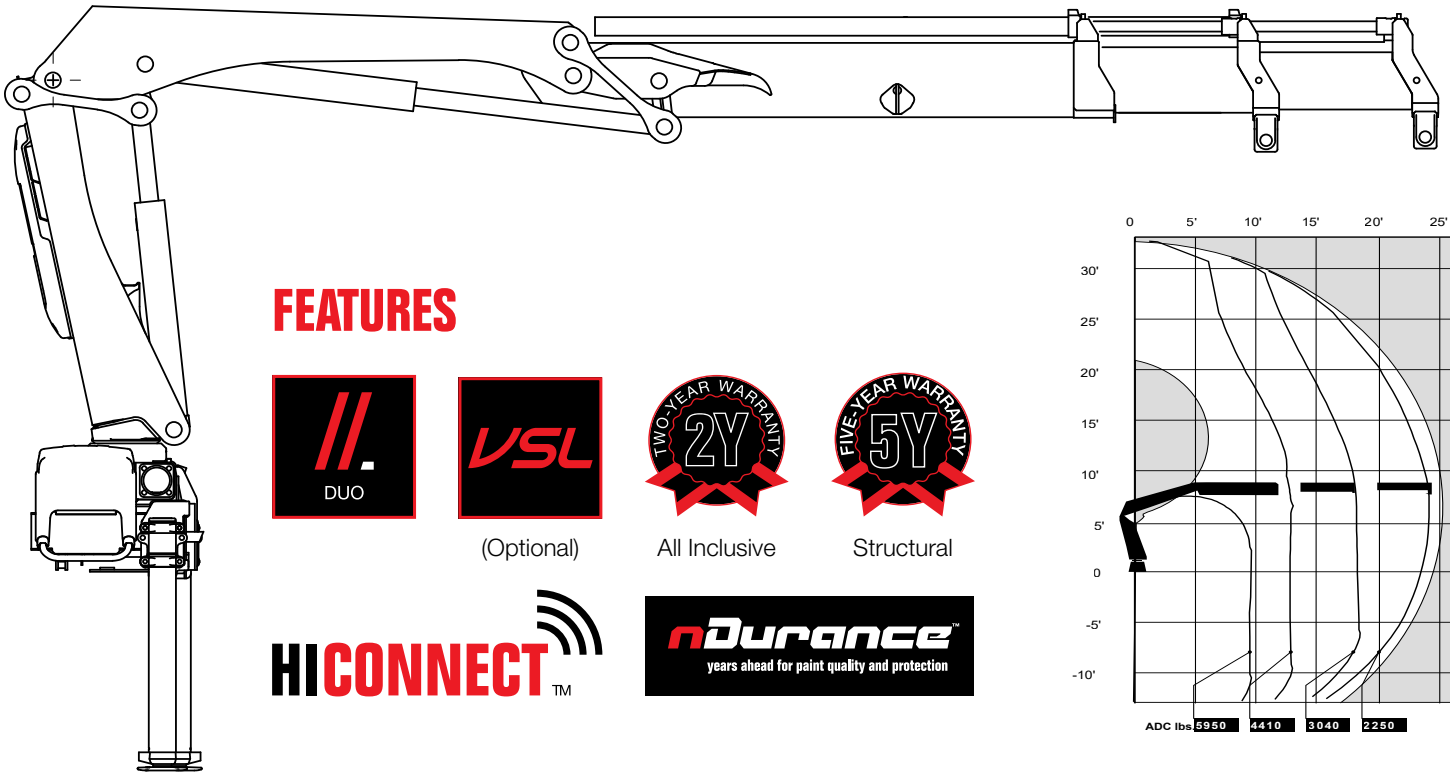


**BUILT TO PERFORM**



# HIAB X-DUO 088 BASIC DATA

TECHNICAL DATA	X-DUO 088 B-1	X-DUO 088 B-2	X-DUO 088 B-3	X-DUO 088 E-4	X-DUO 088 E-5
Max. lifting capacity (ft-lbs)	57 520	54 560	47 970	52 380	50 140
Outreach, hydraulic extensions (ft)	18' 8"	25' 3"	31' 10"	38' 1"	44' 11"
Outreach, manual extensions (ft)	31' 10"	38' 9"	38' 9"	44' 11"	-
Outreach / lifting capacity (ft-lbs)	8' 10" - 6 610 12' 6" - 4 630 17' 9" - 3 260 - - -	9' 6" - 5 950 12' 6" - 4 410 17' 9" - 3 040 23' 11" - 2 200 - -	10' 2" - 5 400 12' 10" - 4 060 18' 1" - 2 780 23' 11" - 1 980 30' 2" - 1 540 -	7' 3" - 7 050 13' 9" - 3 790 19' 0" - 2 560 25' 3" - 1 810 31' 6" - 1 370 38' 1" - 1 100 -	7' 3" - 6 610 14' 1" - 3 530 19' 4" - 2 340 25' 7" - 1 590 31' 10" - 1 190 38' 5" - 930 44' 11" - 770
Slewing angle (°)	190 - 406	190 - 406	190 - 406	190 - 406	190 - 406
Height in folded position (in)	79	79	79	79	79
Width in folded position (in)	87	91	94	91	94
Installation space needed (in)	31	31	34	33	35
Weight, "standard" crane without stabilizers (lbs)	2 140	2 380	2 580	2 780	2 950
Weight, stabilizer equipment (lbs)	340 - 670	340 - 670	340 - 670	340 - 670	340 - 670
Weight, jib (lbs)	-	-	-	-	-



## FEATURES



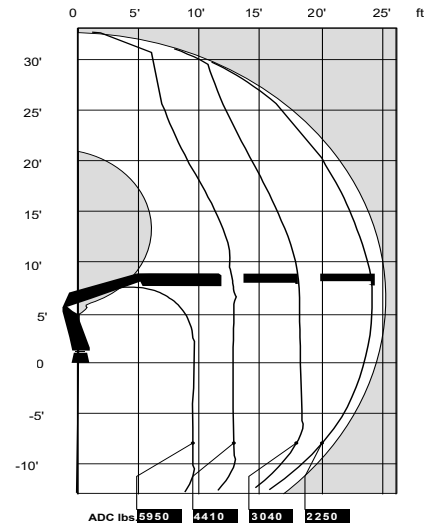
(Optional)



All Inclusive



Structural



**Disclaimer.** Hiab cranes have been built to meet the highest standards of safety and service life and have been thoroughly tested. Strength calculations for this model have been carried out in accordance with EN13001 in fatigue class S2. Cargotec's certified Quality Assurance System complies with ISO 9001. Some of the items in our literature may be extra equipment. Certain applications may require an official permit. We reserve the right to change technical specifications without prior notice. Hiab cranes produced for EU-countries are CE marked and comply with the European Standard EN12999.

Hiab is the world's leading provider of on-road load handling equipment. Our high performance product range includes loader cranes, forestry and recycling cranes, demountables, truck mounted forklifts and tail lifts. We aim to set the industry benchmark for customer satisfaction by providing products and services that meet customer needs globally.

www.hiab.us.com  
Hiab is part of Cargotec.  
www.cargotec.com

Hiab USA Inc  
12233 Williams Road  
Perrysburg, OH 43551 USA  
tel. +419 482 6000  
fax. +419 482 6001

