

TECHNICAL SPECIFICATIONS  
**HIAB X-HIPRO 1058**

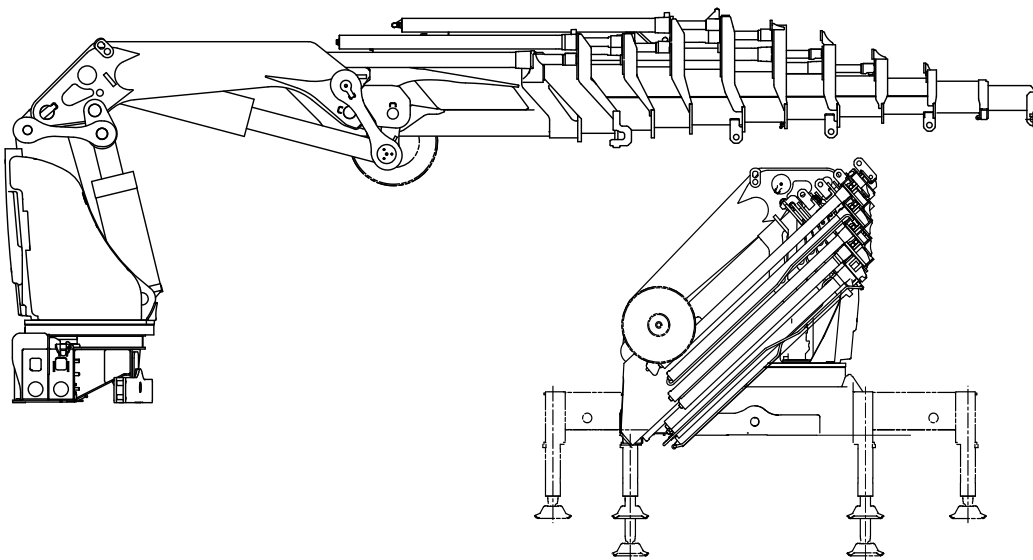


**BUILT TO PERFORM**



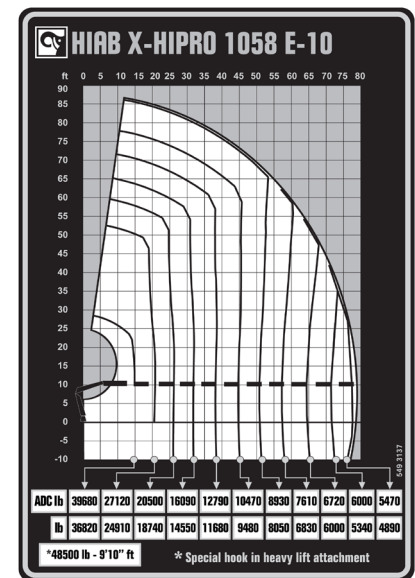
# HIAB X-HIPRO 1058 BASIC DATA

TECHNICAL DATA	EP-4	EP-5	EP-6	E-8	E-9	E-10
Max. lifting capacity (ft-lbs)	619 570	612 920	608 500	592 300	588 610	585 640
Outreach, hydraulic extensions (ft)	38' 9"	46' 7"	53' 10"	50' 2"	64' 4"	78' 9"
Outreach, manual extensions (ft)	-	-	-	-	-	-
Outreach / lifting capacity (ft-lbs)	15' 5" - 39 680 19' 8" - 31 310 25' 3" - 24 250 31' 6" - 19 180 38' 1" - 15 870 - - - - -	15' 5" - 39 680 20' 4" - 29 760 26' 3" - 22 710 32' 6" - 18 080 39' 1" - 14 770 46' 3" - 12 350 - - - -	15' 5" - 39 680 20' 4" - 29 320 26' 3" - 22 270 32' 6" - 17 640 39' 1" - 14 550 46' 3" - 12 130 53' 6" - 10 470 - - -	14' 5" - 39 680 20' 0" - 28 660 25' 7" - 21 610 31' 2" - 17 200 37' 5" - 13 670 44' 0" - 11 460 50' 2" - 9810 57' 1" - 8 490 63' 8" - 7 610 -	14' 5" - 39 680 20' 4" - 27 780 25' 11" - 20 940 31' 6" - 16 530 37' 9" - 13 230 44' 3" - 10 910 50' 6" - 9 260 57' 5" - 7 940 64' 0" - 7 050 70' 10" - 6 350 -	14' 5" - 39 680 20' 8" - 27 120 26' 3" - 20 500 31' 10" - 16 090 38' 1" - 12 790 44' 7" - 10 470 50' 10" - 8 930 57' 9" - 7 610 64' 4" - 6 720 71' 6" - 6 000 78' 1" - 5 470
Slewing angle (°)	∞	∞	∞	∞	∞	∞
Height in folded position (in)	99	102	102	99	99	102
Width in folded position (in)	100	100	100	100	100	100
Installation space needed (in)	62	64	71	76	68	75
Weight, "standard" crane without stabilizers (lbs)	14 590	15 430	15 830	17 410	17 920	18 250
Weight, stabilizer equipment (lbs)	2 650 - 3 070	2 650 - 3 070	2 650 - 3 070	2 650 - 3 070	2 650 - 3 070	2 650 - 3 070



X-HiPro 1058 E-10  
Side View

X-HiPro 1058 E-10  
Front View



**Disclaimer.** Hiab cranes have been built to meet the highest standards of safety and service life and have been thoroughly tested. Strength calculations for this model have been carried out in accordance with EN13001 in fatigue class S2. Cargotec's certified Quality Assurance System complies with ISO 9001. Some of the items in our literature may be extra equipment. Certain applications may require an official permit. We reserve the right to change technical specifications without prior notice. Hiab cranes produced for EU-countries are CE marked and comply with the European Standard EN12999.

Hiab is the world's leading provider of on-road load handling equipment. Customer satisfaction is the first priority for us. Hiab's product range includes HIAB loader cranes, JONSERED recycling and forestry cranes, LOGLIFT forestry cranes, MOFFETT truck mounted forklifts, and MULTILIFT demountables, as well as DEL, WALTCO, and ZEPRO tail lifts.

www.hiab.us.com  
Hiab is part of Cargotec.  
www.cargotec.com

Hiab USA Inc  
12233 Williams Road  
Perrysburg, OH 43551 USA  
tel. 419 482 6000  
fax. 419 482 6001



V2016.11.03