

TECHNICAL SPECIFICATIONS
HIAB X-DUO 078

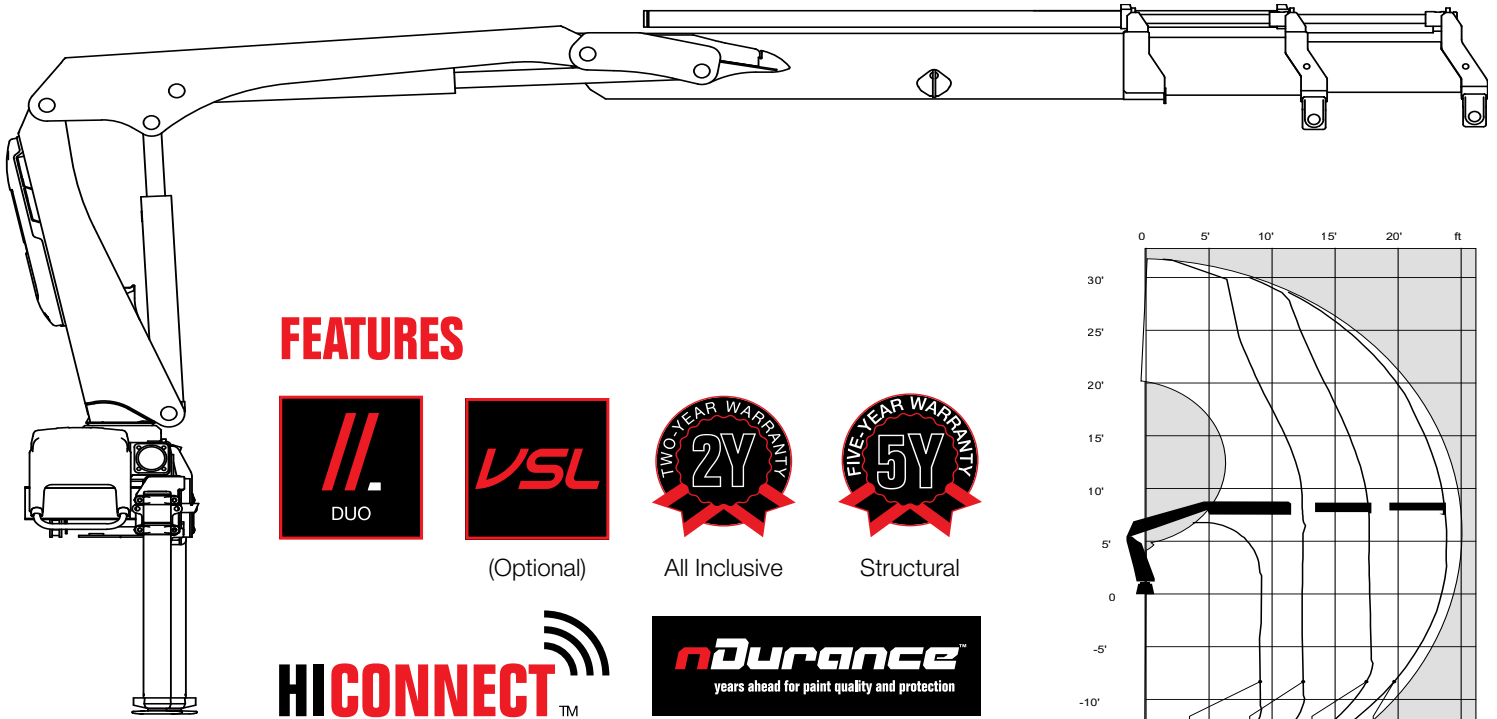


BUILT TO PERFORM



HIAB X-DUO 078 BASIC DATA

TECHNICAL DATA	X-DUO 078 B-1	X-DUO 078 B-2	X-DUO 078 B-3	X-DUO 078 E-4
Max. lifting capacity (ft-lbs)	65 640	67 120	68 590	69 330
Outreach, hydraulic extensions (ft)	18' 8"	24' 11"	31' 6"	38' 1"
Outreach, manual extensions (ft)	31' 6"	38' 5"	38' 5"	-
Outreach / lifting capacity (ft-lbs)	8' 6" - 5 840 12' 6" - 4 060 17' 9" - 2 870 - -	9' 2" - 5 290 12' 6" - 3 880 17' 9" - 2 690 23' 7" - 1 980 -	9' 6" - 4 850 12' 6" - 3 700 17' 9" - 2 510 23' 11" - 1 760 30' 2" - 1 410 -	7' 3" - 5 950 13' 5" - 3 260 18' 8" - 2 200 24' 11" - 1 540 31' 2" - 1 150 38' 1" - 930
Slewing angle (°)	190 - 406	190 - 406	190 - 406	190 - 406
Height in folded position (in)	75	75	75	75
Width in folded position (in)	83	86	86	92
Installation space needed (in)	31	31	34	33
Weight, "standard" crane without stabilizers (lbs)	1 930	2 140	2 340	2 510
Weight, stabilizer equipment (lbs)	340 - 670	340 - 670	340 - 670	340 - 670
Weight, jib (lbs)	-	-	-	-



FEATURES



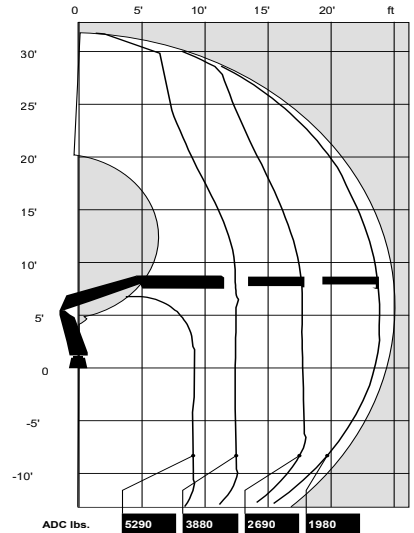
(Optional)



All Inclusive



Structural



Disclaimer. Hiab cranes have been built to meet the highest standards of safety and service life and have been thoroughly tested. Strength calculations for this model have been carried out in accordance with EN13001 in fatigue class S2. Cargotec's certified Quality Assurance System complies with ISO 9001. Some of the items in our literature may be extra equipment. Certain applications may require an official permit. We reserve the right to change technical specifications without prior notice. Hiab cranes produced for EU-countries are CE marked and comply with the European Standard EN12999.

Hiab is the world's leading provider of on-road load handling equipment. Our high performance product range includes loader cranes, forestry and recycling cranes, demountables, truck mounted forklifts and tail lifts. We aim to set the industry benchmark for customer satisfaction by providing products and services that meet customer needs globally.

www.hiab.us.com
Hiab is part of Cargotec.
www.cargotec.com

Hiab USA Inc
12233 Williams Road
Perrysburg, OH 43551 USA
tel. +419 482 6000
fax. +419 482 6001

