

**HIAB**



**HIAB AT WORK**  
**FIRE & RESCUE**

# HIAB LOADER CRANES REACHING NEW LIMITS



Fire & Rescue lifting must be done with fluid precise movements to ensure optimum execution of the task. As the crane of choice for the Military, HIAB cranes have been designed and built from the ground up to provide the best operation precision and load handling characteristics in their class. Paired with low crane weight, high lifting capacities and Hiab's industry leading safety features and stability management systems, there's no better knuckle-boom crane for emergency lifting operations. Mounted behind the cab or on the rear, the unique fold-away design does not take up valuable payload space. Hiab Cranes provide a safer, more versatile and more efficient crane solution.

## HIAB ADDRESSES YOUR INDUSTRY PAIN POINTS

Hiab loader cranes are stronger, tougher, and smarter, easily adapting to the ever changing needs of the industry. With reliable support, intelligent services, and a growing number of connected solutions, Hiab loader cranes will maximize performance by offering the right solution for loading, unloading, or moving materials. Like no other truck mounted equipment provider, Hiab understands the specific requirements and realities of any industry and will help secure a safer, more efficient operation with reduced downtime while maximizing revenue.

**SAFETY** - Hiab's industry leading technology provides world class, industry leading safety features that keep operators safe and in control, minimizing risk to individuals or the environment. With the smart technology solutions of Hiab's loader cranes, human driven errors and unsafe operations are reduced.

**EFFICIENCY** - Hiab's advanced technology drives the performance of the equipment resulting in superior operation efficiencies. Hiab's class-leading products can not only be used by operators of different skill levels, but are also helpful with ever-changing resources, supporting business efficiency and increasing productivity.

**DOWNTIME** - Hiab's renowned reliability combined with industry leading safety features and control systems is proven to reduce downtime, while our nationwide service network ensures that equipment is maintained with minimal oversight.

**TRAINING** - Training and educating operators takes time, but Hiab's advanced control systems and technology allows customers to manage their resources in the best way, whether the operator is highly experienced or a new employee without losing too much time.

**RELIABILITY** - Hiab loader cranes are the industry leaders in the area of reliability. Our premium engineering and cutting edge operation management features ensure optimum longevity and service life of your equipment. All backed up with the most comprehensive warranty in the market.

**REVENUE** - Hiab loader cranes provide many cost benefits that are ideal for businesses with repetitive, efficient operations. With a reliable design, quality materials, game changing smart technology, and industry specific innovation, investing in Hiab equipment provides a total package for any industry.



Hiab HiConnect™ is a web-based dashboard that displays insights on equipment usage, location, time in operation, idle time, and productivity level. By enabling new insights, it helps you to further increase efficiency, productivity, and safety. HiConnect is the latest technology in terms of connectivity capabilities. Being able to remotely access data is

key to maximizing your business with facts instead of assumptions. HiConnect maintains constant contact with all units, giving fleet managers the ability to stop unsafe behavior and usage before an incident happens. With the ability to view service history and plan upcoming services, your fleet has minimum downtime and increases daily efficiencies.





Saying you are confident in your product is one thing, warranting it is another. The HIAB X-crane has a 2-year warranty on the entire crane and a 5-year warranty on the structural parts. Meaning, Hiab covers repair or replacement of components for 2 years. In addition, in the 3rd, 4th or 5th year, if a main, structural component fails your Hiab warranty will cover it. Certain normal exceptions (such as replacement of consumables) apply.

## FEATURES THAT OPTIMIZE OPERATIONS



The **HiDuo** control system with XSDrive remote control brings an unprecedented level of **safety** to operations without reducing performance. This highly flexible system will make your business safer and more profitable with all electronic functions, managed by our SPACE system, which includes Overload Protection (OLP) and Automatic Duty Control (ADC). When approaching an overload condition, the crane gives an audible and visual signal at 90% capacity and will stop all radius increasing functions once full capacity has been reached.



Hiab's optional **Variable Stability Limit system (VSL)** monitors the truck's stability by registering the extension of stabilizers and monitoring the pressures at each leg to determine the **maximum safe capacity** of the crane, allowing for higher capacities in situations where the legs are not able to be fully extended.



**Load Stability System (LSS-V)** provides smoother, more precise vertical boom motions. If an operator performs a hard stop while raising or lowering a load, the **LSS-V** system controls boom movement, minimizing the bouncing of the boom and load, while preventing load damage and unnecessary stress on the crane's components. **LSS-V** is standard on HiDuo cranes with four or more extensions and optional for cranes with less extension cylinders. **LSS-V** is a feature that works in the background and provides smoother boom functions allowing for easier placement of the load, making deliveries faster and more **efficient**. By controlling boom movement and minimizing the bounce of the boom, the structural stress is reduced, thus increasing the expected service life of the crane.



**Semi Automatic Folding (SAF)** is another optional feature that simplifies the stowing process reducing it to a single-lever operation, protecting the crane and the truck from damage. It allows a single lever operation to fold and unfold the crane, while activating just one lever, which greatly **simplifies** this frequent routine operating task.



The **HIAB XSDrive** remote control increases **efficiency** by giving the operator freedom of movement to use the best possible position to view the load. It features two-way communication with the crane, proportionally controlling movements. The **HIAB XSDrive** remote control is **reliable** and worry-free industrial component designed to last the life of the crane.



Hiab's **nDurance™** paint is an anti-corrosion paint system using nano technology for the ultimate anti-corrosion coating, maintaining a rust-free **reliable** crane.



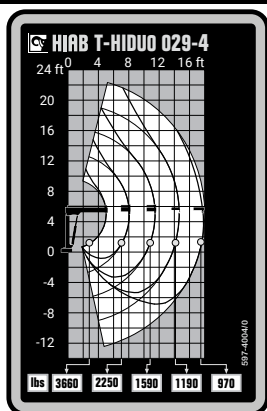
**Hiab ProCare™** is a proactive preventative maintenance service contract, designed to **maximize uptime** of all Hiab equipment by maintaining proper service intervals.

We have invested heavily in our **Nationwide Service and Support** team as part of our commitment to our customers. With 28 branch locations and over 200 factory-trained mobile service technicians, your Hiab loader crane is protected with an unrivalled coast-to-coast service network, greatly reducing the **downtime** of your equipment, thus **reducing overhead costs**.

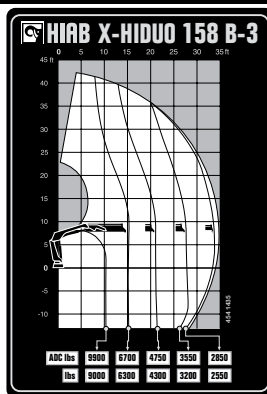
# HIAB T-HIDUO 029 / X-HIDUO 158 / X-HIPRO 232 Technical Specifications



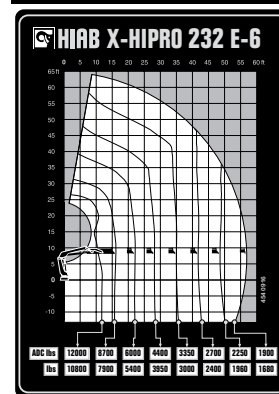
## HIAB T-HIDUO 029



## HIAB X-HIDUO 158



## HIAB X-HIPRO 232



Our extensive stock of parts at our **Regional Distribution Center** ensures next-day delivery on almost all items, reducing **downtime** and **saving you money**. The same team you trust to deliver high-quality, premium products to your exact requirements can also be trusted to keep you moving.

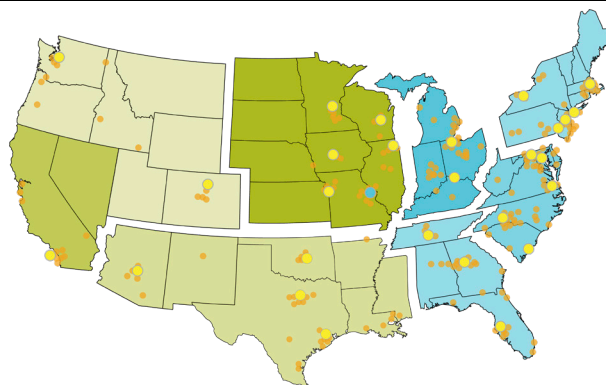


Hiab's **Leading Warranty** exceeds the industry's standard terms because our products are designed to last longer and provide many years of **reliable** service.



Hiab's innovative design elements have the working **environment** in mind. HIAB cranes have a high performing control system, which saves on fuel consumption. Our Valve 200, when combined with a variable displacement piston pump, provides the highest level of speed, precision, and efficiency available. On average, a HIAB crane with the V200 and variable pump will consume 325 gallons less diesel fuel per year compared to other models using fixed displacement pumps.

## HIAB USA LOCATIONS



### Our commitment to you

Hiab is the world's leading provider of on-road load handling equipment, intelligent services, smart and connected solutions. Hiab's class-leading load handling equipment includes HIAB, EFFER and ARGOS loader cranes, LOGLIFT and JONSERED forestry and recycling cranes, MOFFETT and PRINCETON truck mounted forklifts, MULTILIFT skiploaders and hooklifts, and tail lifts under the ZEPRO, DEL, and WALTCO brands. As the industry pioneer and with a proud 75 year history, Hiab is committed to be the preferred partner and solution provider to its customers and shape the future of intelligent load handling. [www.hiab.com](http://www.hiab.com) Hiab is part of Cargotec Corporation. [www.cargotec.com](http://www.cargotec.com)

**For all your sales and service needs, call our nationwide hotline at 419.482.6000 to find your nearest Hiab USA branch.**



# HIAB



Hiab USA Inc  
12233 Williams Road  
Perrysburg, OH 43551 USA  
tel. +419 482 6000  
[www.hiab.us.com](http://www.hiab.us.com)

