

TECHNICAL SPECIFICATIONS
HIAB K-HIPRO 505



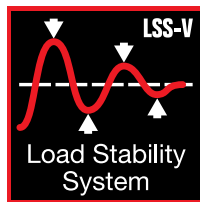
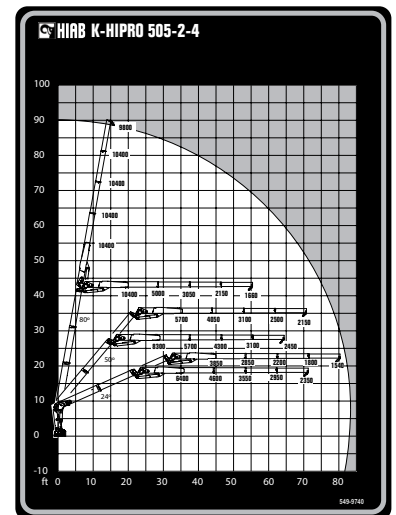
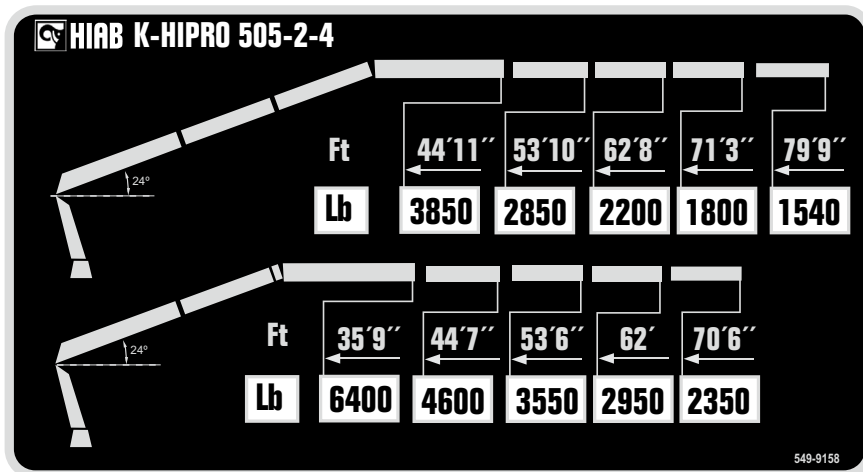
BUILT TO PERFORM



HIAB

HIAB K-HIPRO 505 BASIC DATA

TECHNICAL DATA	K-HIPRO 505 2-4	
Max. lifting capacity (ft-lbs)	296 600	
Outreach, hydraulic extensions (ft)	82' 8"	
Lifting height above installation level (ft)	91' 0"	
Outreach / lifting capacity (ft-lbs)	One inner boom section extended	
	Two inner boom sections extended	
	35' 9" - 6 400	44' 11" - 3 850
	44' 7" - 4 600	53' 10" - 2 850
	53' 6" - 3 550	62' 8" - 2 200
	62' 0" - 2 950	71' 3" - 1 800
	70' 6" - 2 350	79' 9" - 1 540
Slewing angle (°)	460	
Height in parking position (in)	9' 3"	
Installation space needed (in)	42	
Weight, "standard" crane without stabilizers (lbs)	13 640	
Weight, stabilizer equipment (lbs)	1 971	
Outrigger spread (ft)	26' 3"	



Disclaimer. Hiab cranes have been built to meet the highest standards of safety and service life and have been thoroughly tested. Strength calculations for this model have been carried out in accordance with EN13001 in fatigue class S2. Cargotec's certified Quality Assurance System complies with ISO 9001. Some of the items in our literature may be extra equipment. Certain applications may require an official permit. We reserve the right to change technical specifications without prior notice. Hiab cranes produced for EU-countries are CE marked and comply with the European Standard EN12999.

Hiab is the world's leading provider of on-road load handling equipment. Our high performance product range includes loader cranes, forestry and recycling cranes, demountables, truck mounted forklifts and tail lifts. We aim to set the industry benchmark for customer satisfaction by providing products and services that meet customer needs globally.

www.hiab.us.com
Hiab is part of Cargotec.
www.cargotec.com

Hiab USA Inc
12233 Williams Road
Perrysburg, OH 43551 USA
tel. +419 482 6000
fax. +419 482 6001



hiab.us.com

V2019.07.12