

HIAB



HIAB AT WORK
SCAFFOLDING DELIVERY

HIAB LOADER CRANES REACHING NEW HEIGHTS



Operators throughout North America have acclaimed HIAB Cranes as the best cranes on the market for the delivery of building materials. HIAB cranes have been designed and built from the ground up to provide low crane weight, high lifting capacities, and the best load handling characteristics in their class. HIAB's next generation cranes perfectly cover all of today's building delivery requirements. With a variety of models designed specifically to meet the different demands of building materials deliveries, HIAB knuckle boom cranes are the ultimate solution. Mounted behind the cab, its unique fold-away design does not take up valuable payload space and a HIAB crane is a one-man operation, providing a safer, more versatile and efficient delivery method.

HIAB ADDRESSES YOUR INDUSTRY PAIN POINTS

Hiab loader cranes are stronger, tougher, and smarter, easily adapting to the ever changing needs of the scaffolding industry. With reliable support, intelligent services, and a growing number of connected solutions, Hiab loader cranes will maximize performance by offering the right solution for loading, unloading, or moving materials. Like no other truck mounted equipment provider, Hiab understands the specific requirements and realities of any industry and will help secure a safer, more efficient operation with reduced downtime while maximizing revenue.

SAFETY - Hiab's industry leading technology provides world class, industry leading safety features that keep operators safe and in control, minimizing risk to individuals or the environment. With the smart technology solutions of Hiab's loader cranes, human driven errors and unsafe operations are reduced.

EFFICIENCY - Hiab's advanced technology drives the performance of the equipment resulting in superior operation efficiencies. Hiab's class-leading products can not only be used by operators of different skill levels, but are also helpful with everchanging resources, supporting business efficiency and increasing productivity.

DOWNTIME - Hiab's renowned reliability combined with industry leading safety features and control systems is proven to reduce downtime, while our nationwide service network ensures that equipment is maintained with minimal oversight.

TRAINING - Training and educating operators takes time, but Hiab's advanced control systems and technology allows customers to manage their resources in the best way, whether the operator is highly experienced or a new employee without losing too much time.

RELIABILITY - Hiab loader cranes are the industry leaders in the area of reliability. Our premium engineering and cutting edge operation management features ensure optimum longevity and service life of your equipment. All backed up with the most comprehensive warranty in the market.

REVENUE - Hiab loader cranes provide many cost benefits that are ideal for businesses with repetitive, efficient operations. With a reliable design, quality materials, game changing smart technology, and industry specific innovation, investing in Hiab equipment provides a total package for any industry.



Hiab HiConnect™ is a web-based dashboard that displays insights on equipment usage, location, time in operation, idle time, and productivity level. By enabling new insights, it helps you to further increase efficiency, productivity, and safety. HiConnect is the latest technology in terms of connectivity capabilities. Being able to remotely access data is key to maximizing your business with facts instead of assumptions. HiConnect maintains constant contact with all units, giving fleet managers the ability to stop unsafe behavior and usage before an incident happens. With the ability to view service history and plan upcoming services, your fleet has minimum downtime and increases daily efficiencies.



Saying you are confident in your product is one thing, warranting it is another. The HIAB X-cranes have a 2-year warranty on the entire crane and a 5-year warranty on the structural parts. Meaning, Hiab covers repair or replacement of components for 2 years. In addition, in the 3rd, 4th or 5th year, if a main, structural component fails your Hiab warranty will cover it. Certain normal exceptions (such as replacement of consumables) apply.

FEATURES THAT OPTIMIZE OPERATIONS



The **HiDuo** and **HiPro** control systems with Overload Protection (OLP) bring an unprecedented level of **safety** to operations without reducing performance. This highly flexible system will make your business safer and more profitable with all electronic functions, managed by our SPACE system, which includes Overload Protection (OLP) and Automatic Duty Control (ADC). When approaching an overload condition, the crane gives an audible and visual signal at 90% capacity and will stop all radius increasing functions once full capacity has been reached.



Automatic Speed Control (ASC) reduces dynamic loading by progressively reducing the speed of the crane when the capacity is between 80% and 100%, preventing operators from performing **unsafe, abrupt movements**.



HIAB's **Variable Stability Limit system (VSL)** monitors the truck's stability by registering the extension of stabilizers and monitoring the pressures at each leg to determine the **maximum safe capacity** of the crane, allowing for higher capacities in situations where the legs are not able to be fully extended.



Load Stability System (LSS-V) provides smoother, more precise vertical boom motions. If an operator performs a hard stop while raising or lowering a load, the **LSS-V** system controls boom movement, minimizing the bouncing of the boom and load, while preventing load damage and unnecessary stress on the crane's components. This feature works in the background to smooth out boom functions allowing for easier placement of the load, making deliveries faster and more **efficient**. By controlling boom movement and minimizing the bounce of the boom, the structural stress is reduced, thus increasing the expected service life of the crane.



Crane Tip Control (CTC) and **Semi Automatic Motion (SAM)** are optional features available on HiPro cranes. **CTC** allows the crane's controls to be controlled by three levers – the horizontal extension from the truck, the vertical lift, and the rotation of the crane. **SAM** brings automated crane movement sequences via one-paddle control - an industry first. **CTC** and **SAM** provide a **simplified operation**, reducing training time when onboarding new operators, while allowing operators to perform complex techniques safely and efficiently.



HiPro models, equipped with a **HIAB CombiDrive3** remote control increases **efficiency** by giving the operator freedom of movement to use the best possible position to view the load. It comes standard with a 100%, 70%, or 50% speed switch. This feature allows the operator to easily change the speed of the crane - especially useful when adjusting heavy loads at long outreaches. The **HIAB CombiDrive3** remote control is **reliable** and worry-free industrial component designed to last the life of the crane.



The **HIAB XSDrive** remote control increases **efficiency** by giving the operator freedom of movement to use the best possible position to view the load. It features two-way communication with the crane, proportionally controlling movements. The **HIAB XSDrive** remote control is **reliable** and worry-free industrial component designed to last the life of the crane.



Pump Flow Distribution (PFD) provides smooth crane operations by equally dividing oil flow instead of taking the path of least resistance. **PFD** ensures that available oil flow is distributed evenly, making the crane operation very predictable, smooth, and precise.



Hiab's nDurance™ paint is an anti-corrosion paint system using nano technology for the ultimate anti-corrosion coating, maintaining a rust-free **reliable** crane.

Hiab ProCare™ is a proactive preventative maintenance service contract, designed to **maximize uptime** of all Hiab equipment by maintaining proper service intervals.

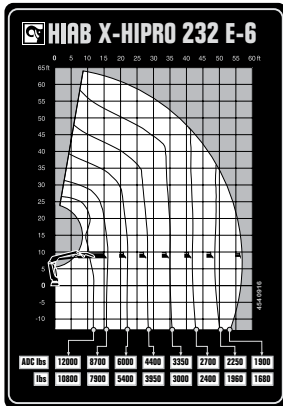


We have invested heavily in our **Nationwide Service and Support** team as part of our commitment to our customers. With 28 branch locations and over 200 factory-trained mobile service technicians, your Hiab loader crane is protected with an unrivaled coast-to-coast service network, greatly reducing the **downtime** of your equipment, thus **reducing overhead costs**.

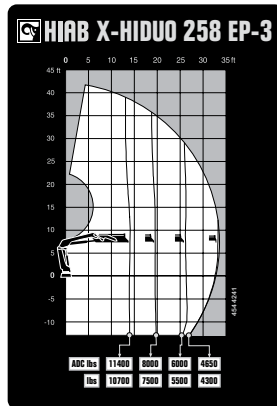
HIAB X-HIPRO 232 / X-HIDUO 258 / X-HIPRO 302 Technical Specifications



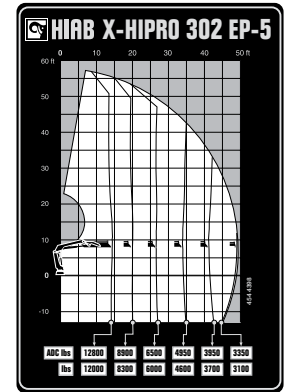
HIAB X-HIPRO 232 E-6



HIAB X-HIDUO 258 EP-3



HIAB X-HIPRO 302 EP-5



Our extensive stock of parts at our **Regional Distribution Center** ensures next-day delivery on almost all items, reducing **downtime** and **saving you money**. The same team you trust to deliver high-quality, premium products to your exact requirements can also be trusted to keep you moving.

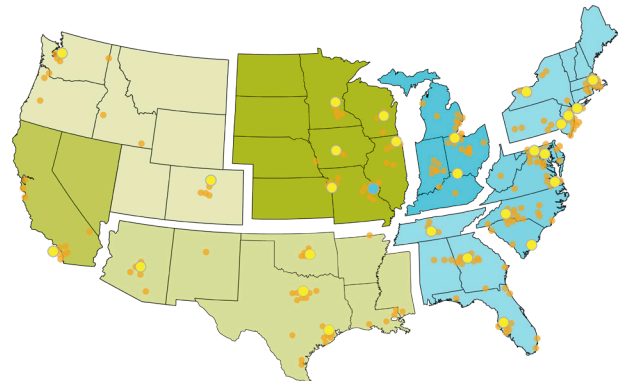


Hiab's **Leading Warranty** exceeds the industry's standard terms because our products are designed to last longer and provide many years of **reliable** service.



Hiab's innovative design elements have the working **environment** in mind. HIAB cranes have a high performing control system, which saves on fuel consumption. Our Valve 200, when combined with a variable displacement piston pump, provides the highest level of speed, precision, and efficiency available. On average, a HIAB crane with the V200 and variable pump will consume 325 gallons less diesel fuel per year compared to other models using fixed displacement pumps.

HIAB USA LOCATIONS



Our commitment to you

Hiab is the world's leading provider of on-road load handling equipment, intelligent services, smart and connected solutions. Hiab's class-leading load handling equipment includes HIAB, EFFER and ARGOS loader cranes, LOGLIFT and JONSERED forestry and recycling cranes, MOFFETT and PRINCETON truck mounted forklifts, MULTILIFT skiploaders and hooklifts, and tail lifts under the ZEPRO, DEL, and WALTCO brands. As the industry pioneer and with a proud 75 year history, Hiab is committed to be the preferred partner and solution provider to its customers and shape the future of intelligent load handling. www.hiab.com Hiab is part of Cargotec Corporation. www.cargotec.com

For all your sales and service needs, call our nationwide hotline at 419.482.6000 to find your nearest Hiab USA branch.



HIAB



Hiab USA Inc
12233 Williams Road
Perrysburg, OH 43551 USA
tel. +419 482 6000
www.hiab.us.com

