



waltco.com
parts@waltco.com

Tech Support 330.633.9191
Waltco Parts Dept. 800.411.5685

Domino's Pizza

GTSL Tech Manual

Gen 2 Rack & Pinion Drive



Waltco Lift Corp.
Corporate Office United States
285 Northeast Ave.
Tallmadge, OH 44278
P: 330.633.9191
F: 330.633.1418

Waltco Lift Corp.
United States
620 S Hambledon Ave.
City of Industry, CA 91744
P: 626.964.0990
F: 626.964.0149

Table of Contents



Improper operation and maintenance of this liftgate could result in severe personal injury or death.

Read and understand the contents of the owner's manual and all warning and operation decals before operating and/or performing maintenance on this liftgate.

INTRODUCTION and WARRANTY	1-4
LIFTGATE TERMINOLOGY	5-6
PLACEMENT OF DECALS	7
SCHEMATICS FOR GRAVITY AND POWERDOWN UNITS	8-11
KEY COMPONENTS	12-14
SINGLE / DUAL PUMP	15
TROUBLESHOOTING GUIDE	16-20
HYDRAULIC AND ELECTRIC LAYOUT	21-22
ONE PIECE GALVANIZED PLATFORM PM	23-24
MOUNT FRAME PM	25-26
TRACK FRAME PM	27-28
ROLLER WEAR AND ARM BEARING AND PIN WEAR CHECK	29-32
NOSE MOUNTED INDICATOR LIGHTS	33-34
OIL CHANGING PROCEDURE	35
SWITCH REPLACEMENT	36
SWITCH REPLACEMENT	37
HOW TO ORDER PARTS	28

Introduction

Each Waltco liftgate is manufactured to stringent quality standards for years of reliable service. To ensure maximum performance of your Waltco liftgate, always specify and use “OEM Parts” from Waltco.

Service and repair should only be performed by an authorized Waltco distributor. For information on the nearest authorized Waltco distributor contact:

Waltco Lift Corp.

285 Northeast Avenue

Tallmadge, OH 44278

Phone: 800.411.5685

Fax: 800.411.5684

E-mail: parts@waltco.com



This is the safety alert symbol. This manual uses this symbol to alert you to potential personal injury hazards. Obey all safety messages that follow this symbol to avoid personal injury or death.



The use of non-standard or makeshift parts can be extremely hazardous and result in serious injury or death.



Every vehicle that has a WALTCO Liftgate must have legible WARNING AND OPERATION DECALS clearly posted on the vehicle and an OWNER'S MANUAL in the vehicle at all times as a guide for proper operation and maintenance.

WALTCO Warranty Policy

WALTCO warrants its products free of defects in materials and workmanship.

WALTCO will replace components found defective during the warranty period. Labor will be reimbursed according to our flat rate labor schedule at the prevailing shop rate.

Contact our Sales or Warranty departments for the warranty period of your model or for information regarding our flat rate labor schedule.

WALTCO Warranty Claim Procedure

For consideration, all claims must be received within 30 days of repair and include the following information:

- Liftgate Serial Number
- Description of problem and corrective actions
- Itemization of the labor charge to include the number of hours and labor rate

Replacement warranty parts can be obtained by contacting Waltco's Parts Department. Parts must be returned for inspection when requested.

Exclusions:

Waltco's warranty does not include reimbursement for service calls, vehicle rental, towing, travel time, fabrication of parts available from WALTCO, damage from misuse or abuse, negligence, accidents, alteration, loss of income or overtime expense, oil, or normal wear.

Diagnosis and troubleshooting time are included in the flat rate labor times.

Warranty and technical information is available from WALTCO's toll free customer service lines from 8:00 a.m. to 5:00 p.m. EST.

Waltco Truck Equipment Co.

285 Northeast Ave, Box 354, Tallmadge, OH 44278

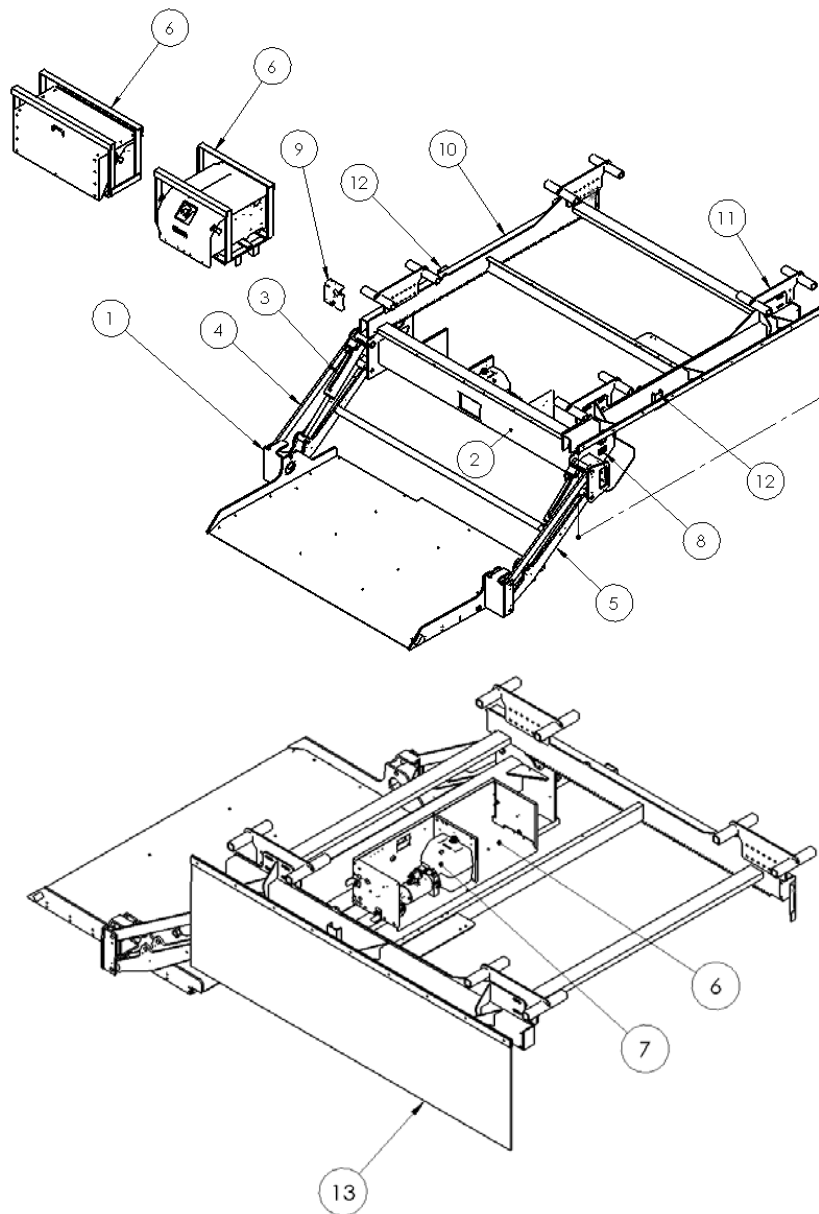
1-800-211-3074, 330-633-9191

Please visit our websites: <http://www.waltco.com> or <http://www.hiab.com>

We're behind you all the way!

Chapter 2 Liftgate Terminology

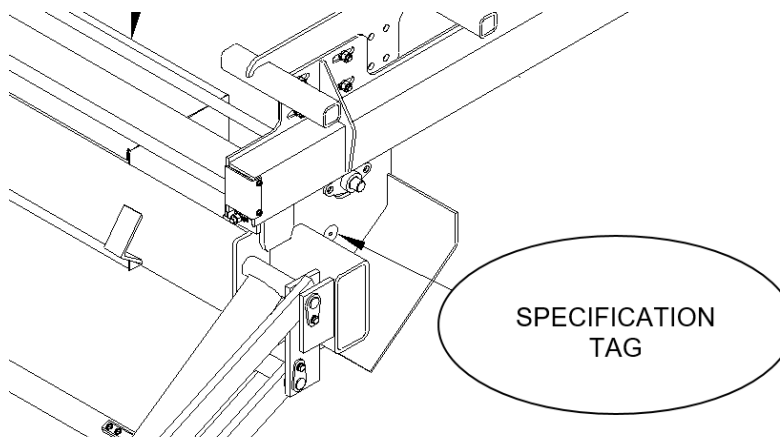
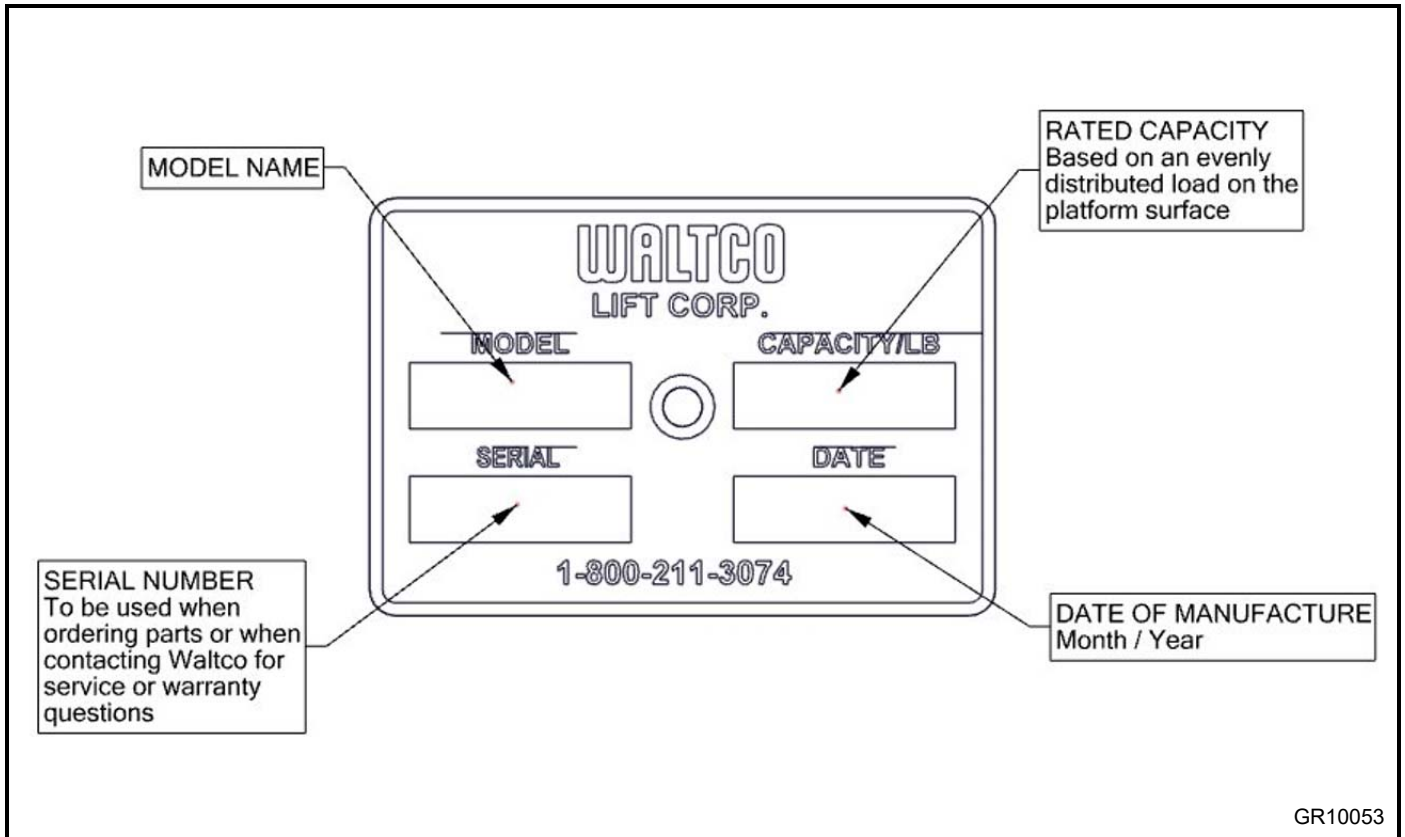
- | | |
|---|------------------|
| 1. Deck | 10. Track Frame |
| 2. Mount Frame | 11. Mount plates |
| 3. Lift Cylinder | 12. Up-Stops |
| 4. Parallel Arm | 13. Mud Flap |
| 5. Lift Arm | |
| 6. Battery Box (2 on-gate, 2-auxiliary, or 4-auxiliary) | |
| 7. Pump Unit Box | |
| 8. Identification Tag | |
| 9. Switches (Mounted separately) | |



Chapter 2 Liftgate Terminology

EXPLANATION OF SPECIFICATION TAG

MODEL NO.	DESCRIPTION	CAPACITY
GTSL-33	GTSL-33 SLIDER LIFTGATE	3300 LBS.



GR10010


Placement of Decals

Decal Replacement Kit: 80002238



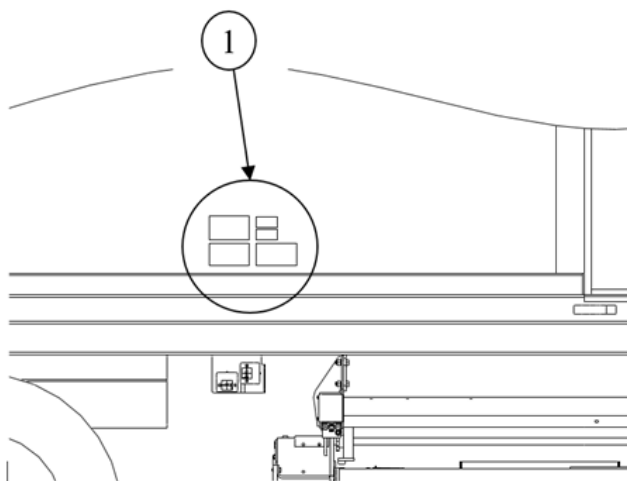
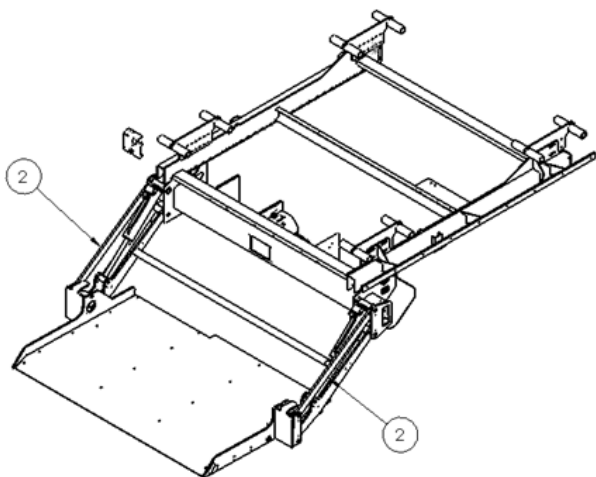
All decals must be in place and legible or all warranties are void.

DECAL CHART

AREA	DECAL	QTY	PART NUMBER	LOCATION
1	3300 <u>lb</u> Capacity or	1	80100585	Locate in a conspicuous place near controls.  If your liftgate is equipped with dual controls, an additional Safety Instruction decal (80100850) is to be placed in a conspicuous place near the second set of the controls. Refer to the following diagram showing decal locations.
	Operation Decal	1	80101445	
	Safety Decal	1	80100850	
	Stand Clear	1	75089296	
	Hazard	1	80101370	
2	3300 <u>lb</u> Capacity or	2	80100585	Locate on parallel arms
	Stand Clear	2	75089296	

To maximize decal adhesion to surfaces:

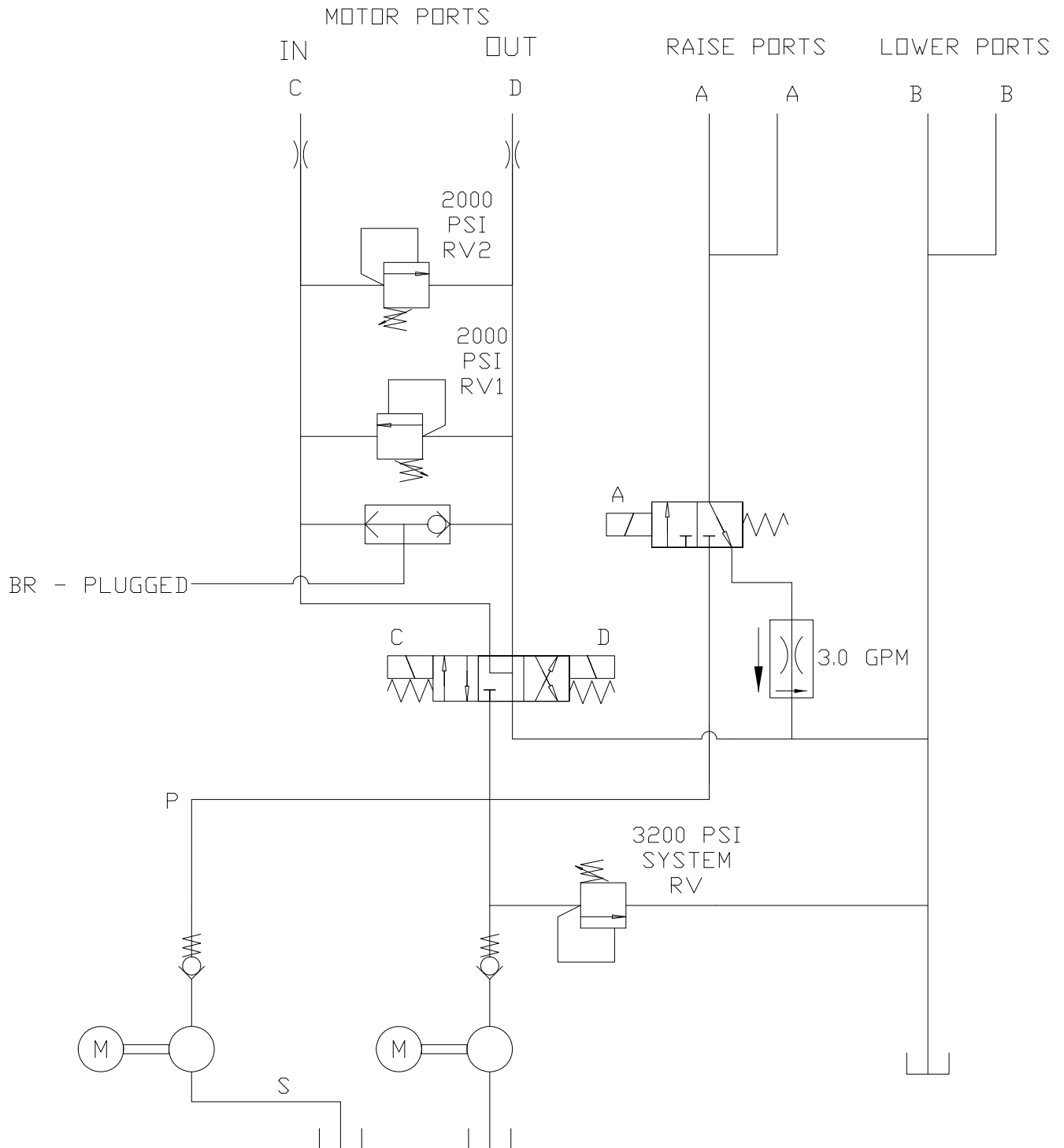
- Surface must be dry and clean
- Firm pressure must be applied to decal
- Minimum surface temperature 65°
Heat gun may be used to heat surface



GR10022

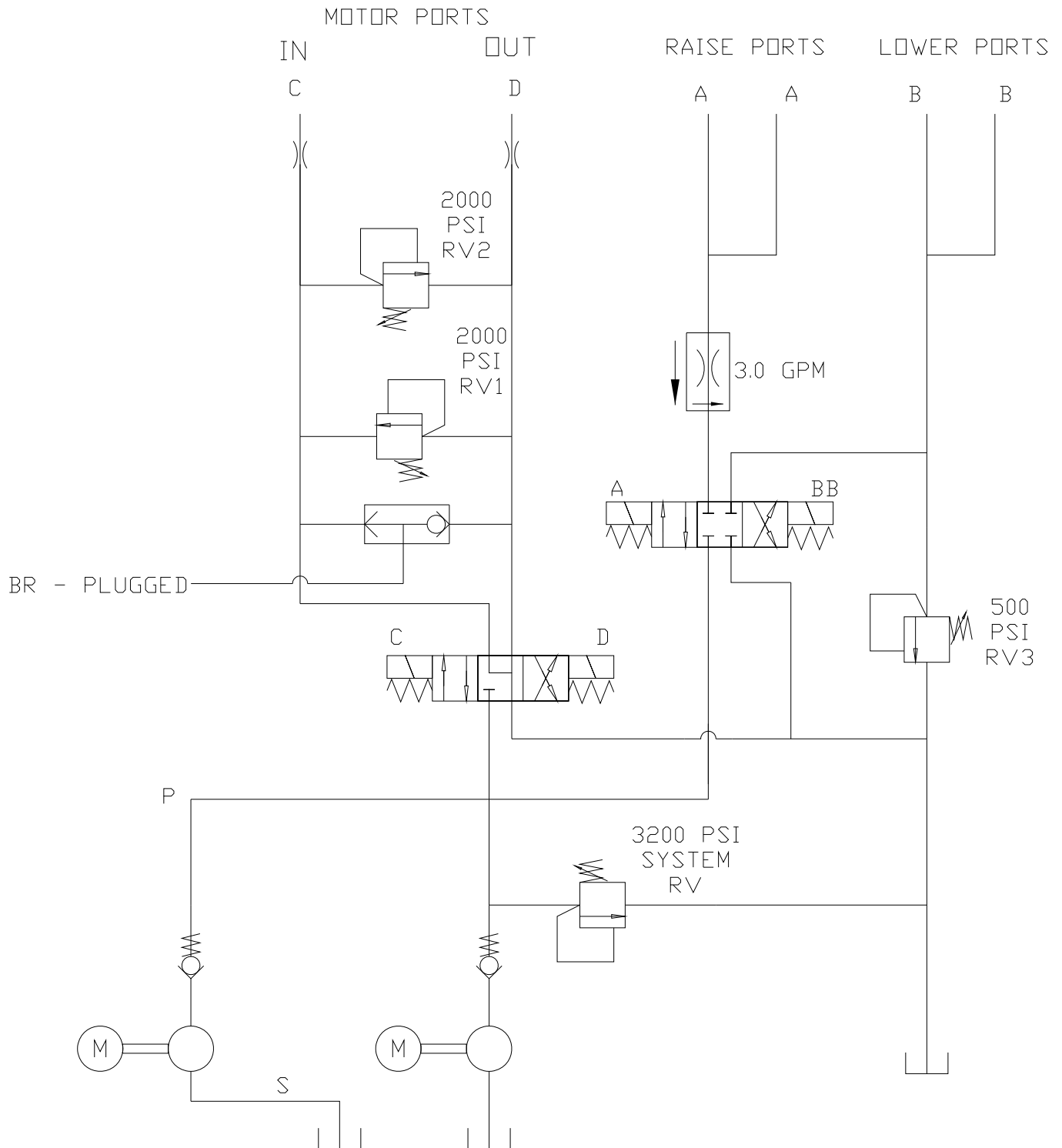
Schematics

Hydraulic Schematic - Dual Pump Gravity Down

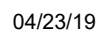


Schematics

Hydraulic Schematic - Dual Pump Power Down

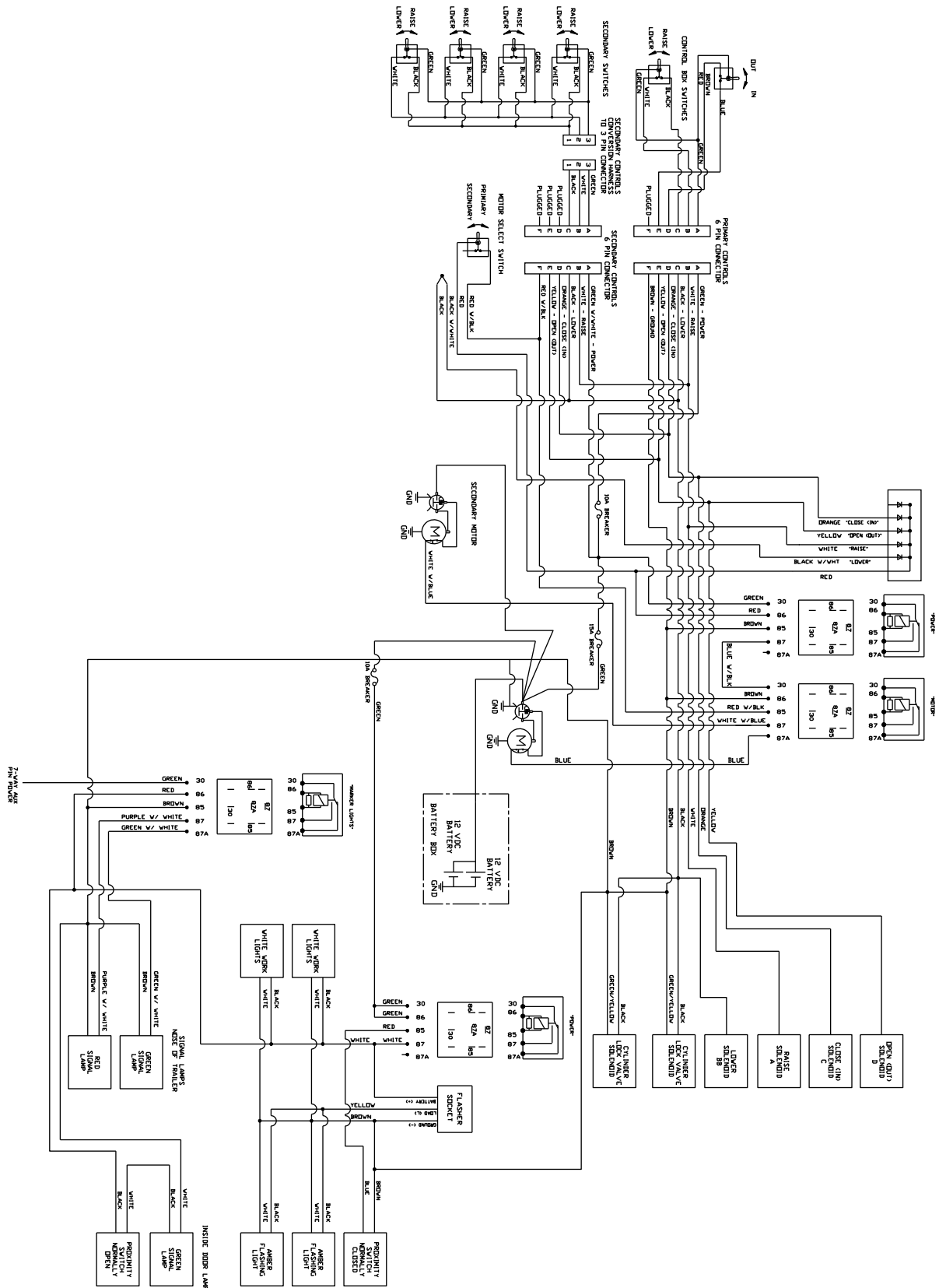


Electrical Schematic – Dual Pump Gravity Down



Schematics

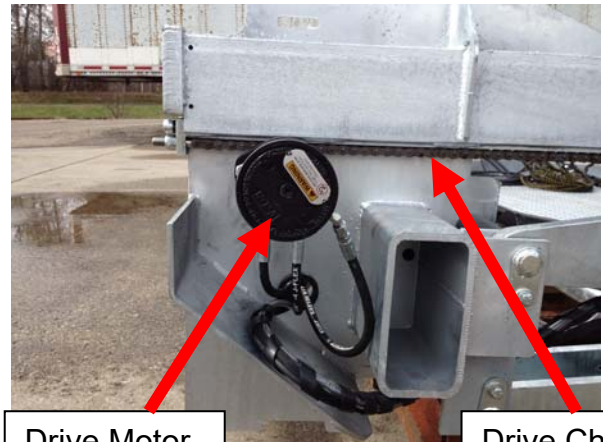
Electrical Schematic – Dual Pump Power Down



Key Components



Cylinder Lock Valve & Coil Assembly



Drive Motor

Drive Chain



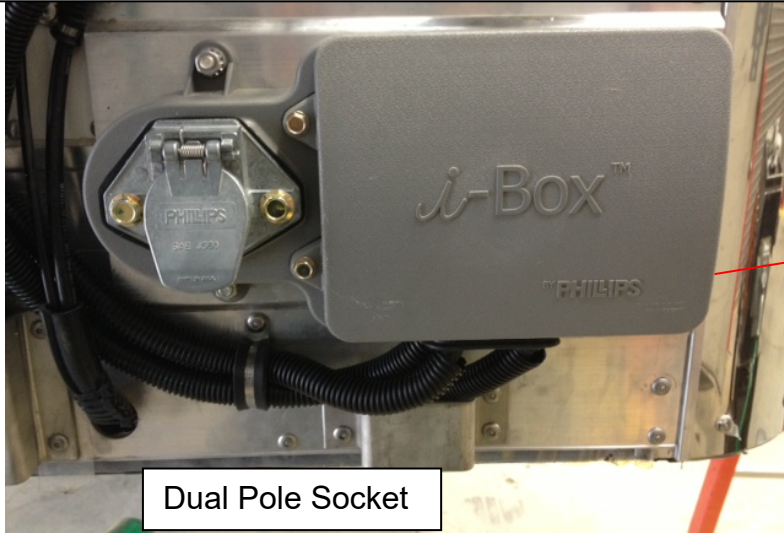
Platform Work Light



Flasher Lights

Key Components

Phillips Permalogic Charging System-Nose Box



Dual Pole Socket



Contact Phillips Industries direct for troubleshooting the Permalogic System. 800.423.4512 or www.phillipsind.com

For Purkey Nose Socket Box refer to Purkey Tech Info on the Ryder InfoCenter

Driver Platform Indicator lights



One liftgate mounted = one set of lights

Upper set of lights represent the Rear Gate

Green light - Platform is stored

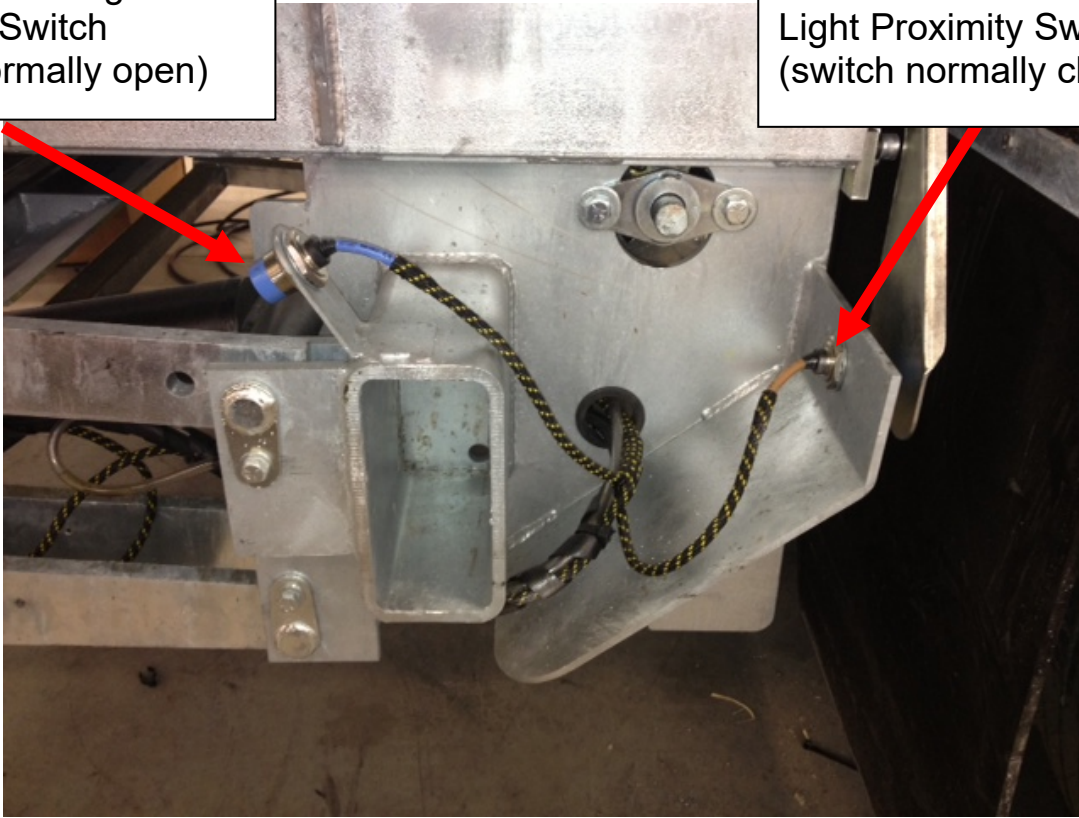
Red light - Platform is not stored

Lower set of lights represent the side gate

Key Components

Platform Door Light
Proximity Switch
(switch normally open)

Platform Work and Flasher
Light Proximity Switch
(switch normally closed)



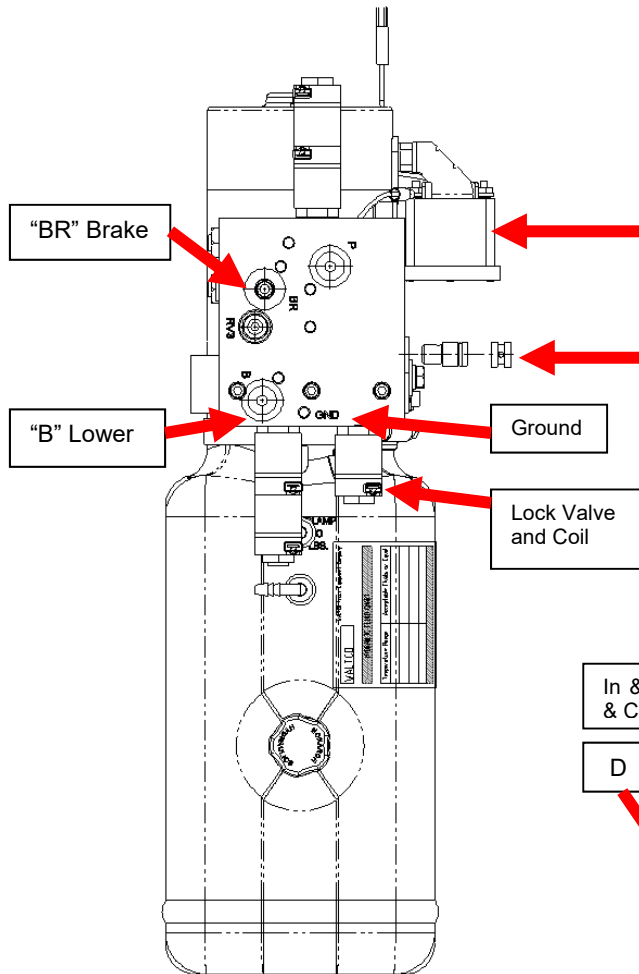
Platform Door Light
(Above side door inside trailer)

Green light indicates platform is
at floor level

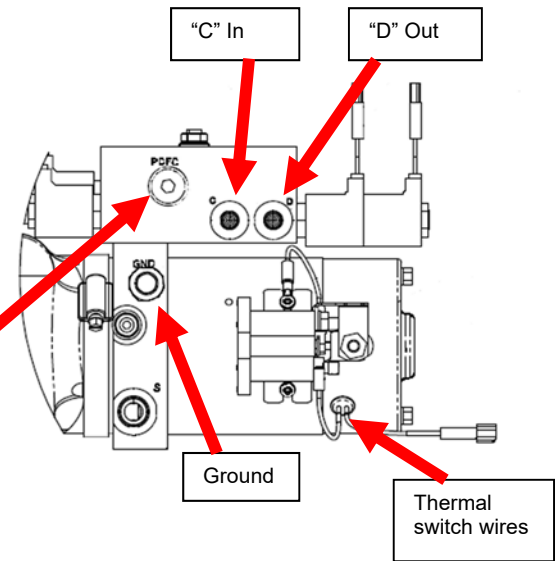


Side Loader Single/Dual Pump

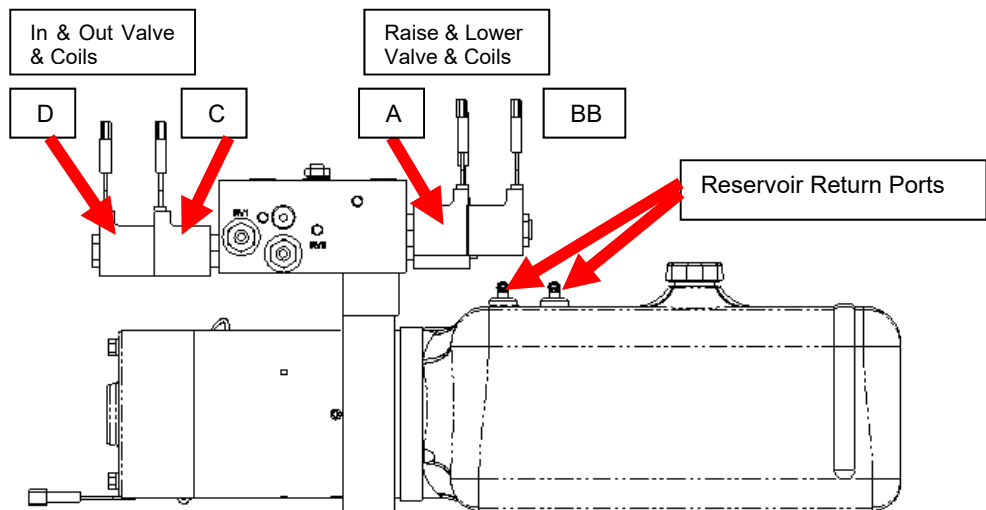
Top View of Valve Body



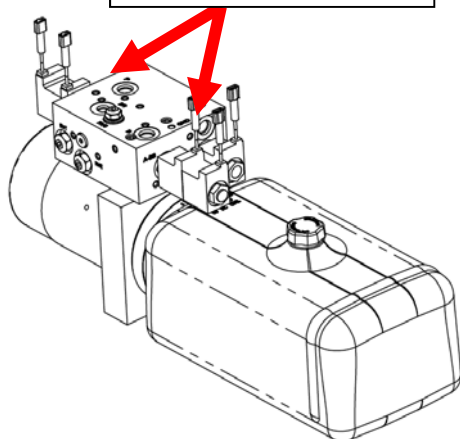
Back side of Valve Body



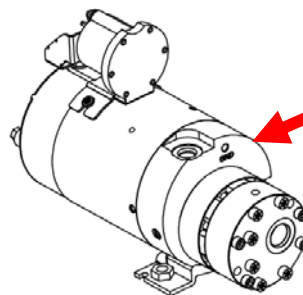
Front View of Valve Body



"A" Ports Driver Side/Curb Side Raise/Lower



Auxiliary Power Unit



Domino's GT Side Loader

Trouble Shooting Guide

CHECKING THE OIL LEVEL IN THE RESERVOIR

*The liftgate is shipped with Shell Tellus 15. Check the owner's manual for additional recommended oils. Fill as required with the specified fluid in the owner's manual. Do not overfill the reservoir. **Domino's spec power unit 90908954:** Raise platform to bed level. Oil should be within ½ to the fill line (over or above) marked on the side of the oil tank. Fill as required with the specified fluid in the owner's manual.*

RECOMMENDED LIFTGATE BATTERY(S)

*Domino's preferred liftgate battery(s) as supplied at during the installation are AGM batteries. The **battery specification is Group 31, 650-750** cold cranking amps and at least **180 minutes** of reserve capacity. Batteries should be load tested before being replaced. When replacing the liftgate battery(s) inspect the cables and wires for corrosion. If the batteries are in need of replacement the charging system should be tested before releasing the trailer.*

MOTOR DOES NOT RUN

The pump motor has built in thermal protection. The thermal switch will shut the motor down if the unit exceeds 240 degrees. Once the motor cools down the switch will reset automatically.

- Check the cab shut off switch confirm that the switch is “ON” and functional. Check for voltage on both terminals of the cab switch. This voltage should be the same as the battery voltage. If you do not find battery voltage check all of the cables and wires for damage and poor connections. Clean any dirty connections and tighten any loose connections.
- Check the Circuit breaker; this is located directly on the liftgate battery(s). Check for voltage on both sides of the circuit breaker. This should also reflect battery voltage.
- Inspect the 15 amp switch fuse located in the switch wiring harness.
- Check the battery(s) for a full state of charge. Load test the lift gate battery(s). Replace any batteries that cannot be fully charged.
- Check all cables and wires for shorts and poor connections; this includes grounds and the gauge of the wire for ground. Check the cables for damages clean any dirty connections and tighten any loose connections.
- Check for voltage at the motor solenoid. Listen for a clicking noise at the motor solenoid when the raise switch is activated. If you have at least **10.5 volts** at the solenoid when the raise switch is activated and you have no voltage to the motor, and then replace the motor solenoid. If the motor does not run after confirming battery voltage at the terminal on the motor, replace the defective motor.
- If you have no power to the motor solenoid with the switch activated you could have a problem with the relays. A relay is used for each function “UP”, “IN” and “OUT” to power the motor solenoid. The switch is not directly wired to the motor solenoid. Post **87** on each relay provides power to motor solenoid. When control switch is pressed for “UP”, “IN” or “OUT”, you should get voltage at the motor solenoid. If you are not getting voltage, then you should check the relays and wiring back to the switch that powers the relays.

Domino's GT Side Loader

Trouble Shooting Guide

PLATFORM DOES NOT RAISE OR RAISES SLOW- MOTOR RUNS

If the motor is not running see the section titled “MOTOR DOES NOT RUN” before proceeding.

- Check for any mechanical obstructions or any mechanical damage. Look for any broken, bent or worn parts that could interfere with normal operation.
- Check and inspect the oil level in the reservoir. Inspect for any contamination or water in fluid. Check the fluid viscosity. **See Checking the oil level in the reservoir**
- Check the **Coil Valve (A)**. Check and confirm voltage to coil when the “**Raise**” switch is activated. Check for **10.5 volts** at the coil. Test the coil for resistance (**4.5ohms**). Confirm that the valve is magnetizing. If the coil is working the valve may need to be replaced. If the valve is not getting voltage, check all cables and wires for shorts and poor connections. Check and test the control switch.
- If your voltage is under **10.5 volts** with the “**Raise**” switch activated, check the battery(s) for a full state of charge. Load test the lift gate battery(s). Replace any batteries that cannot be fully charged.
- Check pumps pressure from the lift port (**A**). It should be **2900 psi**.

PLATFORM DOES NOT SLIDE OUT

If the motor is not running see the section titled “MOTOR DOES NOT RUN” before proceeding.

- Check for any mechanical obstructions or any mechanical damage. Look for any broken, bent or worn parts that could interfere with normal operation. Inspect the railing rollers and track system of the liftgate. Check for any obstructions in the path of travel. Lubricate all pins and bushings.
- Check the **Coil Valve (D)**. Check and confirm voltage to coil when the “**Out**” switch is activated. Check for **10.5 volts** at the coil. Test the coil for resistance (**4.5ohms**). Confirm that the valve is magnetizing. If the coil is working the valve may need to be replaced. If the valve is not getting voltage, check all cables and wires for shorts and poor connections.
- Check and inspect the hydraulic drive motor. Inspect the timing on the tracking system by taking the gate in and making sure that gate touches the stops on both sides evenly. Check to see if the axle gears are engaging evenly on both sides of the chains. Inspect the drive motor for engagement. Then check the line out pressure (**D**) it should be about **1500 psi**.

PLATFORM DOES NOT SLIDE IN - MOTOR RUNS

If the motor is not running see the section titled “MOTOR DOES NOT RUN” before proceeding.

- Check for any mechanical obstructions or any mechanical damage. Look for any broken, bent or worn parts that could interfere with normal operation. Inspect the railing rollers and track system of the liftgate. Check for any obstructions in the path of travel. Lubricate all pins and bushings.
- Check the **Coil Valve (C)**. Check for **10.5 volts** at the coil when the “**In**” switch is activated. Test the coil for resistance (**4.5ohms**). Confirm that the valve is magnetizing. If the coil is working the valve may need to be replaced. If the valve is not getting voltage, check all cables and wires for shorts and poor connections.
- Check and inspect the hydraulic drive motor. Inspect the drive motor for engagement. Then check the line out pressure (**C**) it should be about **1500 psi**.

Domino's GT Side Loader

Trouble Shooting Guide

PLATFORM WILL NOT LIFT TO FULL CAPACITY

- Check the serial tag on the liftgate and verify the load lifting capacity. Confirm that the platform is not over loaded. Confirm that the load is centered correctly on the platform.
- Check and inspect the oil level in the reservoir. Inspect for any contamination or water in fluid. Check the fluid viscosity. **See checking the oil level in the reservoir.**
- Check the battery(s) for a full state of charge. Load test the lift gate battery(s). Replace any batteries that cannot be fully charged
- Check for any mechanical obstructions or any mechanical damage. Look for any broken, bent or worn parts that could interfere with normal operation.
- Check for leaking hoses and lines. Replace any leaking lines or hoses.
- Check for air in the hydraulic system; bleed any air from the lift gate at the cylinder.
- Check the voltage at the pump motor with the “**Raise**” switch activated. The voltage should be **10.5 volts**.
- Check the pump pressure from the lift port. It should be **2900 psi**.

PLATFORM DOES NOT LOWER OR LOWERS SLOW

- Check for any mechanical obstructions or any mechanical damage. Look for any broken, bent or worn parts that could interfere with normal operation.
- Check and inspect the oil level in the reservoir. Inspect for any contamination or water in fluid. Check the fluid viscosity. **See Checking the oil level in the reservoir.**
- Check voltage on the **Lowering Valve (BB)** while the “**Lower**” switch is being activated. The voltage should be at least **10.5 volts**. Feel for a pulse on the valve. Test the coil (**4.5ohms**). Confirm that the valve is magnetizing. If the coil is good the valve may need to be replaced. If the coils are not getting power, check all cables and wires for shorts and poor connections.
- Check voltage on the **Lock Valves** while the “**Lower**” switch is being activated. The voltage should be at least **10.5 volts**. Feel for a pulse on the valve. Test the coil (**4.5ohms**). Confirm that the valve is magnetizing. If the coil is good the valve may need to be replaced. If the coils are not getting voltage, check all cables and wires for shorts and poor connections.

THE CIRCUIT BREAKER TRIPS

- Check for a direct short in power cable. Inspect for damaged or cut cable. Also check for improperly size battery cable.
- A defective motor may draw too much current. Check amperage draw from lift gate motor. At **700 psi** the motor should draw **80-100 amps**.
- Defective circuit breaker. If the breaker is suspected it should be replaced.

CONTROL SWITCH FUSE BLOWN

- Check the wiring for damages, clean dirty connections and tighten any loose connections
- Check and inspect for a short in switch control wire or switch contacts
- Check for defective coils on valves Test the coils (**4.5ohms**)

Domino's GT Side Loader

Trouble Shooting Guide

PLATFORM WILL ONLY LOWER ON ONE SIDE.

- Check for any mechanical obstructions or any mechanical damage. Look for any broken or bent parts that could interfere with normal operation.
- Test for voltage on lock valve. Check for **10.5 volts** at the coil when the “**lower**” switch is pressed. Check for defective coils on valves. Test the coil for resistance (**4.5ohms**). Confirm that the valve is magnetizing. If the coil is working the valve may need to be replaced. If the valve is not getting voltage, check all cables and wires for shorts and poor connections

PUMP MOTOR IS GETTING HOT

- The Thermal sensor is set to activate at **240 F** degrees .This condition may be normal if the liftgate motor experiences high cycles of operation in a short period of time without cooling. The Thermal switch will reset after the motor cools down.
- Check for low voltage. The voltage should be at least **10.5 volts** at the motor.
- Check batteries are fully charged, load test batteries. Check the cables for damages, clean dirty connections and tighten any loose connections.
- Check and confirm that the ground is adequate.

INDICATOR LIGHTS AT THE FRONT OF THE TRAILER ARE NOT WORKING.

- The liftgate has been equipped with two indicator lights that will allow the driver to see if the gate is stored or deployed. The “**GREEN**” indicator means that the gate is stored. The “**RED**” indicator means that the platform is deployed. In order for the indicators to illuminate, the 7 way connector will need to be plugged in.
- If the “**GREEN**” or “**RED**” indicator lights are not getting voltage, check all cables and wires for shorts and poor connections. Check and test the “**Signal Lights Relay**” check for voltage on 87a for the “**RED**” indicator when the platform is deployed and 87 for the “**GREEN**” when the platform is stored.
- Check and inspect the proximity switch, confirm that it is functional
- Check all of the cables and wires for damage and poor connections. Clean any dirty connections and tighten any loose connections.

PLATFORM WARNING LIGHTS ARE NOT WORKING

- Check lights test the lamps to confirm that the lamp does not have a broken filament.
- Check the “**Work Lights Relay**” and confirm that the relay is operating properly.
- Check and inspect the proximity switch, confirm that it is functional
- Check all of the cables and wires for damage and poor connections. Clean any dirty connections and tighten any loose connections.

Domino's GT Side Loader

Trouble Shooting Guide

AMBER WARNING SIGNAL LIGHTS ON PLATFORM ARE NOT WORKING

- Check lights test the lamps to confirm that the lamp does not have a broken filament.
- Check the “**Signal Lights Relay**” and confirm that the relay is operating properly.
- Check and inspect the proximity switch, confirm that it is functional
- Check all of the cables and wires for damage and poor connections. Clean any dirty connections and tighten any loose connections.

DOOR LIGHT INSIDE TRAILER TO INDICATE PLATFORM IS AT FLOOR LEVEL IS NOT WORKING.

- Check lights test the lamps to confirm that the lamp does not have a broken filament.
- Check the “**Door Lights Relay**” and confirm that the relay is operating properly.
- Check and inspect the proximity switch, confirm that it is functional
- Check all of the cables and wires for damage and poor connections. Clean any dirty connections and tighten any loose connections.

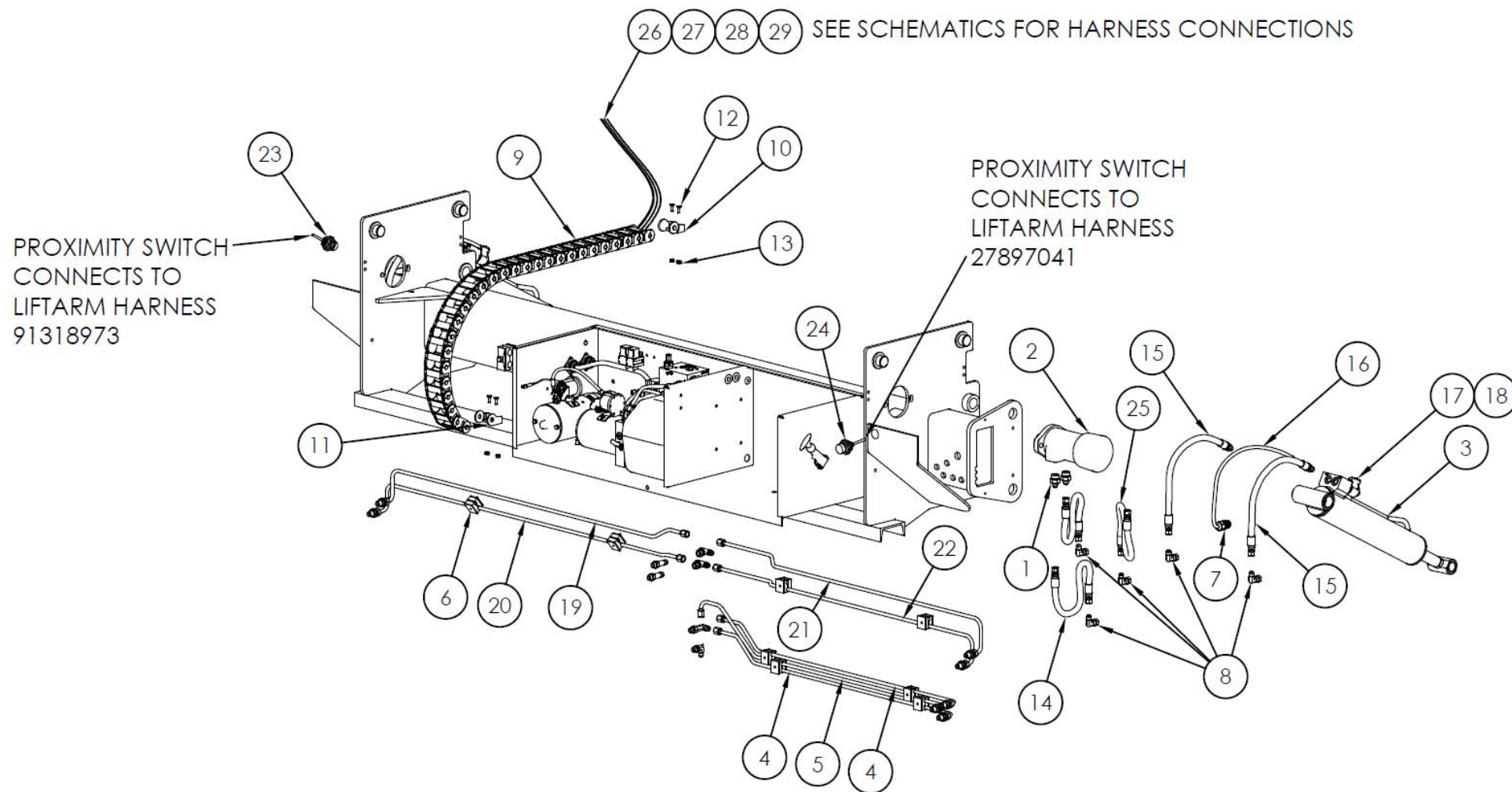
ITEM	PART NUMBER	QTY	DESCRIPTION
1	75083319	2	ADAPTER, 7/8SAE TO 9/16JIC
2	27869050	1	HYDRAULIC MOTOR
3	27880020	2	GT LIFT CYLINDER
4	27884091	2	IN/OUT-BREAK TUBE
5	27884101	1	IN/OUT TUBE
6	27884150	8	TUBE CLAMP MIDSTATE
7	75050008	2	CABLE CLAMP, BULKHEAD
8	75083028	6	ELBOW, 90 DEGREE SWIVEL 9/16M JICX9/16F JIC
9	91160056 91160056-1	1	CABLE CARRIER, 27 LINKS ENDS, ORDER (-1) FOR ONE LINK ONLY
10	91160058	1	MOUNT BRACKET, CABLE CARRIER W/ PIN
11	91160054	1	MOUNT BRACKET, CABLE CARRIER W/ HOLE
12	7500007-3	4	SOCKET HEAD FLAT SCREW, 1/4-20 X 1-1/4" LG
13	75085161	4	LOCK NUT, 1/4-20
14	7500109-1	2	HOSE, 1/4"X15-1/2"LG. 3/8" JICF X 3/8" JICF
15	7500110-1	4	HOSE, 1/4"X19"LG 3/8 JICFX1/4 SAE O-RING
16	27897041	1	LOCK VALVE & WORK LIGHTS HARNESS, SHOWN
	91318973	1	LOCK VALVE, WORK LIGHTS, & INSIDE DOOR LIGHT HARNESS, OPPOSITE
17	27581036	2	LOCK VALVE, COIL
18	22781502	2	LOCK VALVE COMPLETE
19	27884051	1	C.S. RAISE TUBE
20	27884061	1	C.S. LOWER TUBE
21	27884071	1	D.S. RAISE TUBE
22	27884081	1	D.S. LOWERING TUBE
23	91318972	1	PROXIMITY SWITCH, NORMALLY OPEN
24	75089786	1	PROXIMITY SWITCH, NORMALLY CLOSED

ITEM	PART NUMBER	QTY	DESCRIPTION
25	7500109-2	1	HOSE, 1/4"X15-1/2"LG. 1/4" JICF X 3/8" JICF
26	91318974 ^A	1	AUX MOTOR INDICATOR LIGHT HARNESS, NOT SHOWN
27	91318975 ^A	1	UP/DOWN WALL MOUNTED SWITCHES HARNESS, NOT SHOWN
28	91341973 ^A	1	NOSE STORAGE INDICATOR LIGHT HARNESS, NOT SHOWN
29	75089473 ^A	1	BATT CABLE, DUAL #1, 36FT LONG, NOT SHOWN

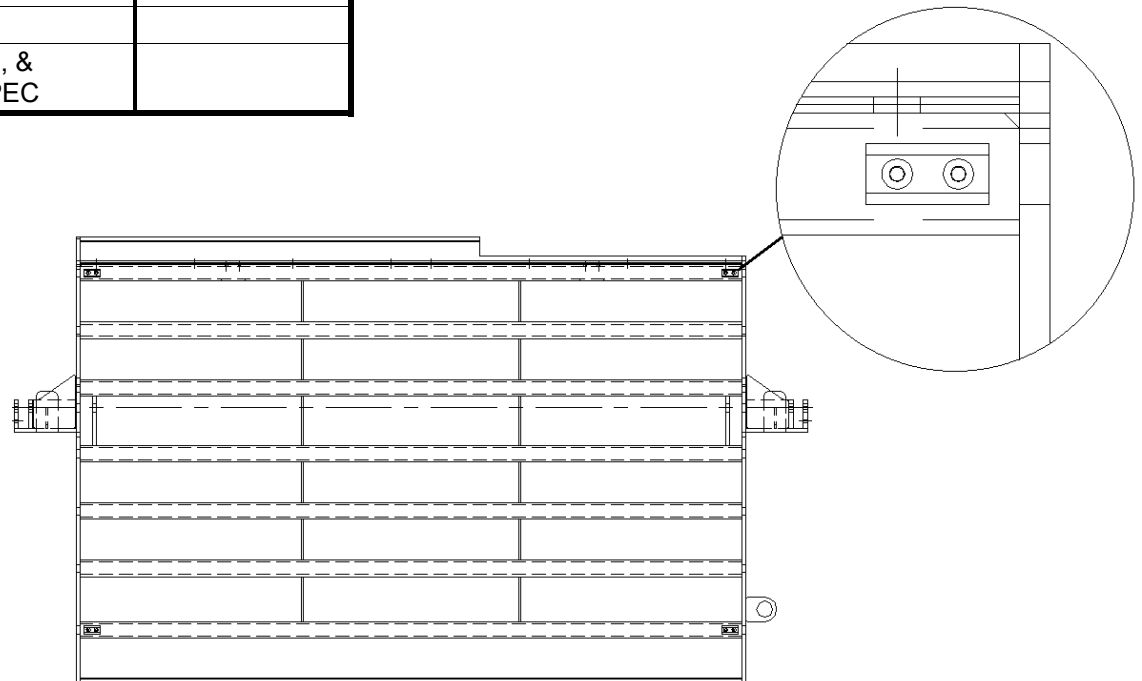
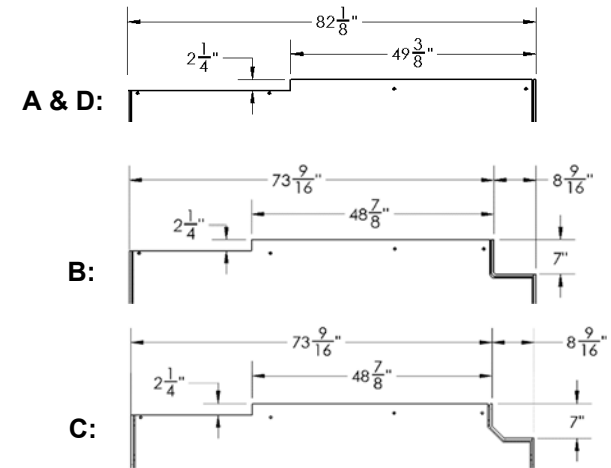
^A Routed through Cable Carrier to Destination

Items 9 thru 13 should be ordered to completely replace the cable carrier. Items can be ordered individually as needed for repair

HYDRAULIC AND ELECTRIC LAYOUT



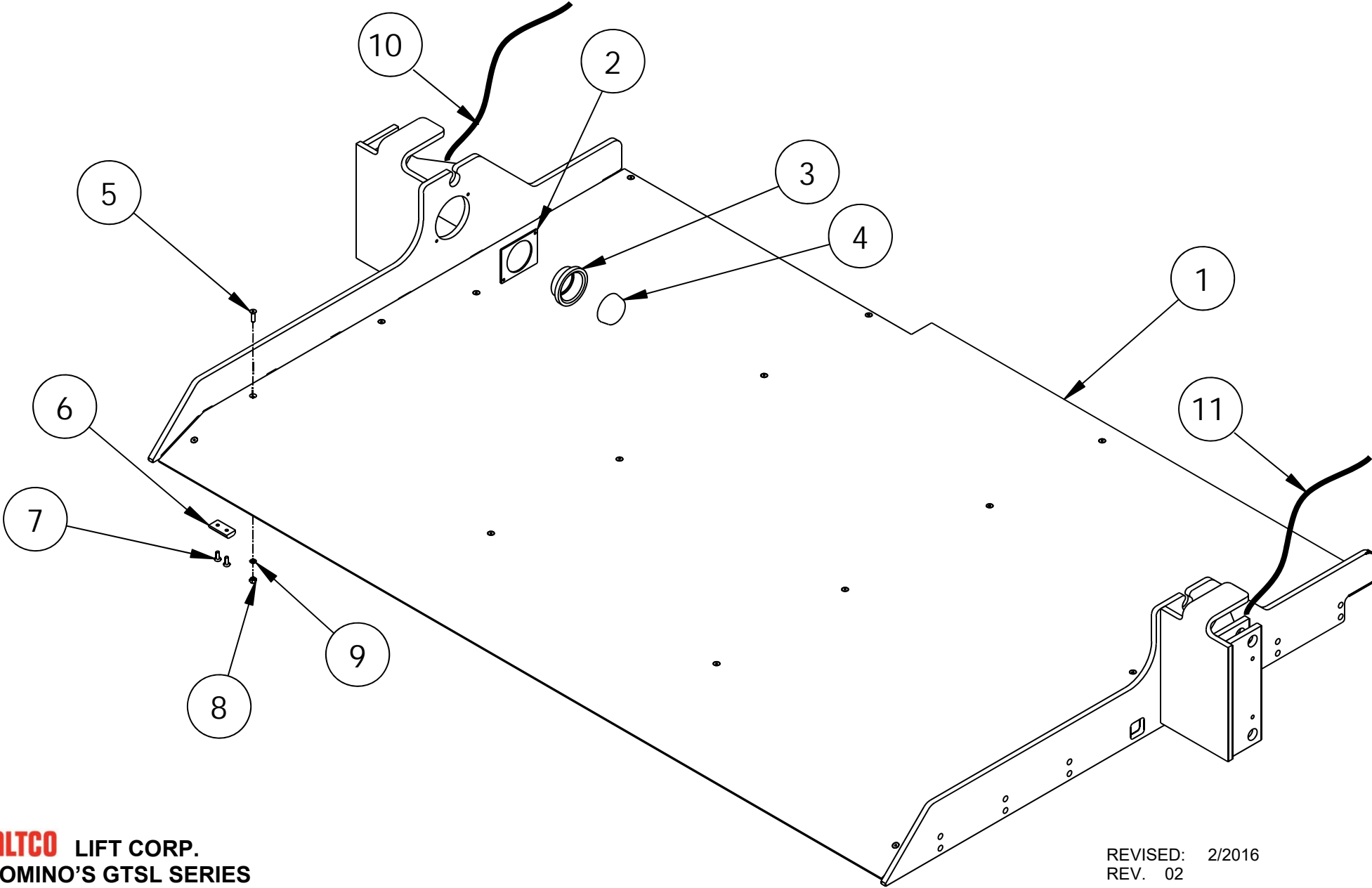
ITEM	PART NUMBER	QTY	DESCRIPTION	NOTCHING
1	91318100	1	Platform Assembly, 49 X 80+5.5 1pc, Galv, Deck Skin & 4 wear pads installed	A
	91318101	1	Plat Assy, 49 X 80+5.5 1pc, Dual notch, Galv, Deck Skin & 4 wear pads installed	B
	91318103GV	1	Plat Assy, 49 X 80+5.5 1pc, Dual notch, Galv, Deck Skin & 4 wear pads installed	C
	91318104GV	1	Plat Assy, 49 X 80+5.5 1pc, Galv, Deck Skin, cartstops, & 4 wear pads installed	D
2	27811230	2	Light Bracket	
3	27897056	2	Grommet, Work Light	
4	27897054	2	Work Light, White LED	
5	75085995	20	Flat Head Socket C'Sink Screw, 1/4-20 x 1.0	
6	34427307	4	Bearing	
7	75086854	8	1/4-20x5/8 Self Tapping Screw Type F Plated	
8	75085161	20	Nylock Nut, 1/4-20	
9	75088079	20	Lock Washer, 1/4"	
10	27897041	1	HARNESS (CS), LIGHT	
11	91318973	1	HARNESS DS, WORK, WARN, & DOOR LIGHTS, DOMINOS SPEC	



WALTCO LIFT CORP.
DOMINO'S GTSL SERIES

REVISED: 2/2016
REV. 02

ONE PIECE GALVANIZED PLATFORM



WALTCO LIFT CORP.
DOMINO'S GTSL SERIES

REVISED: 2/2016
REV. 02

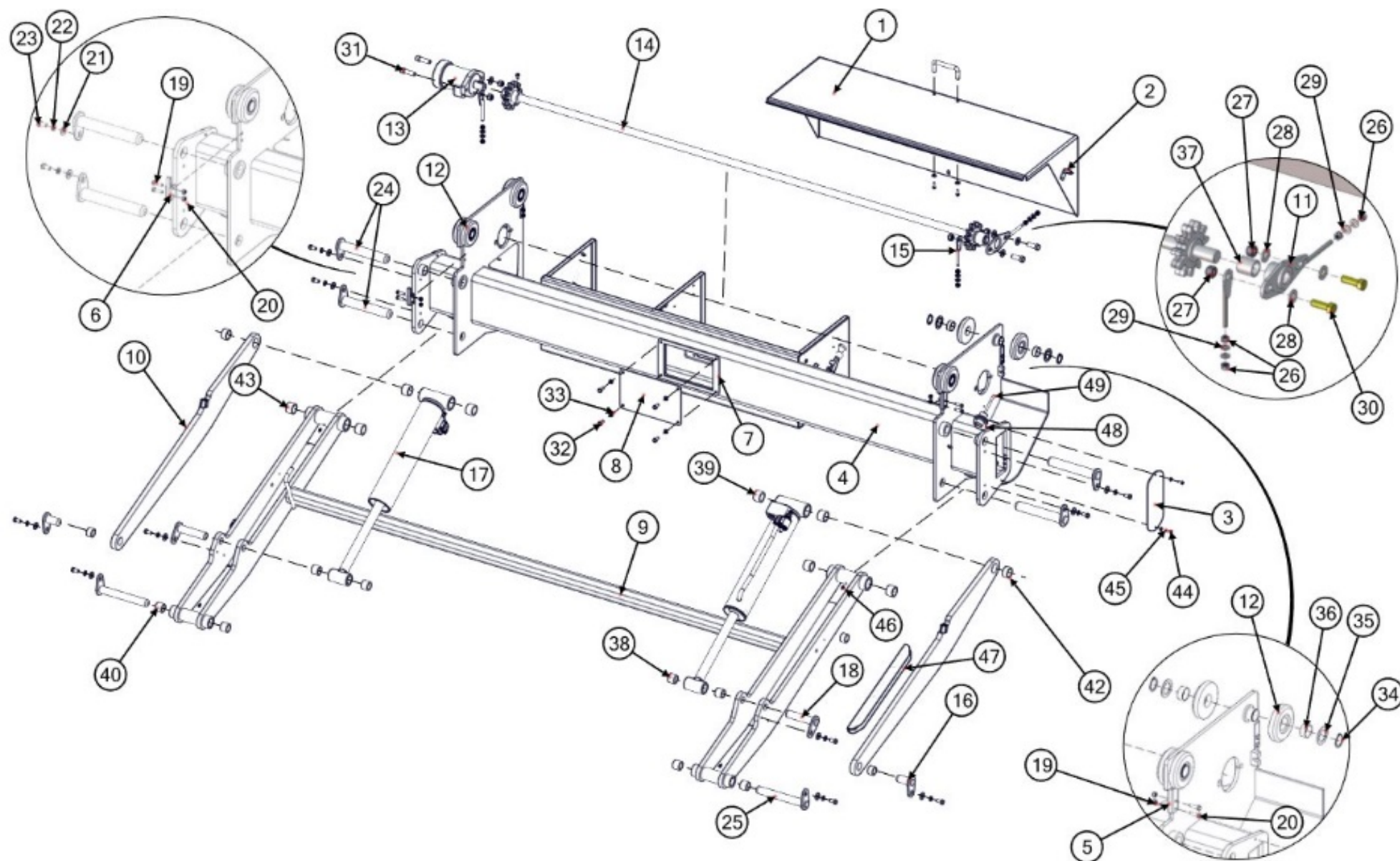
ITEM	PART NUMBER	QTY	DESCRIPTION
1	27891550GV	1	PUMP BOX LID ASSY, GALV
2	27391301	2	HOLD DOWN, POWER UNIT COVER
3	27820800	2	COVER PLATE, MOUNT TUBE
4	27820090GV	1	MOUNT FRAME, GT, GALV
5	27821285	2	STOP BUMPER & GUIDE
6	27821290	2	STOP BUMPER
7	27821261	1	GASKET, ACCESS COVER
8	27821265GV	1	ACCESS COVER, GALV
9	91318300	1	LIFT ARM, LONG, GALV
10	91318500	2	PARALLEL ARM, LONG, SIDE GATE, GALV
	90908752		BOLT, 5/8-18 X 2", GR 8
	75085111		NUT, 5/8-18
11	27865200	1	BEARING ASSY
12	27866535 ^{AB}	8	WHEEL ASSY
13	27869050	1	HYDRAULIC MOTOR
14	27866000ZN	1	DRIVE SHAFT, ZINC
15	27866400	2	PINION ADJUSTER
16	27870800	2	PIN WELDMENT 1"X1-7/8" LG.
17	27880020	2	GT LIFT CYLINDER
18	27871002	2	PIN WELDMENT 1DIA X 4-15/32 LG
19	75085002	8	1/4-20 S.S. NYLOK NUT
20	7500010-21	8	HEX BOLT, 1/4-20X1, GR 8
21	75088053	10	WASHER, 3/8"
22	75088081	10	LOCK WASHER, 3/8
23	75086055	10	HEX BOLT, 3/8-16X3/4 GR 5
24	27895100	4	PIN WELDMENT 1.25 DIA X 7-5/8
25	27895200	2	PIN WELDMENT 1 DIA X 7.75 LG
26	75085003	6	HEX NUT, 5/16-18, SERRATED
27	75085201	4	HEX NUT, 1/2-13, TOP LOCK
28	75088067	4	WASHER, 1/2"
29	75088052	6	WASHER, 5/16"
30	7500010-41	2	HEX BOLT, 1/2-13X1-1/2", GR 8
31	7500009-9	2	SHCS, 1/2-13 X 1-3/4

ITEM	PART NUMBER	QTY	DESCRIPTION
32	75086065	4	HEX BOLT, 5/16-18X3/4 GR 5
33	75088080	4	LOCK WASHER, 5/16
34	75001013 ^{AB}	8	1-1/4" RETAINING RING
35	75088073 ^{AB}	8	THRUST WASHER
36	10010197	8	BEARING 1.25IDX1.38OD, 0.563"
37	10010183	1	BEARING 1.00IDX1.25OD, 1.250"
38	10010140	4	BEARING, 1.00IDX1.25OD, 1.000"
39	10010189	4	BEARING, 1.25IDX1.50OD, 1.000",
40	85803391	4	BEARING, 1.00IDX1.25OD, 1.000"
41	10010142	2	BEARING, 1.00IDX1.25OD, 0.750"
42	10010162	2	BEARING, 1.25IDX1.50OD, 0.750"
43	10010189	4	BEARING, 1.25IDX1.50ODX1.0,
44	75086876	4	BUTTON HEADSOCKET SCREW 1-4-20X3/4
45	75088079	4	LOCK WASHER, 1/4
46	75089306	4	GREASE ZERK, 1/4-28 TAPER
47	27897055	2	LED AMBER ALUMINUM CAUTION BAR
48	91318227	1	BRACKET, PROXY SWITCH
49	91318972	1	PROXIMITY SWITCH, NORMAL OPEN

^A 80002245 Kit, Wheel Replacement (1 wheel)

^B 80002246 Kit, Wheel Replacement (8 wheels)

MOUNT FRAME



WALTCO
Lift Corp
DOMINOS GTSL-33

REVISED: 05/2015
REV. 01

PM

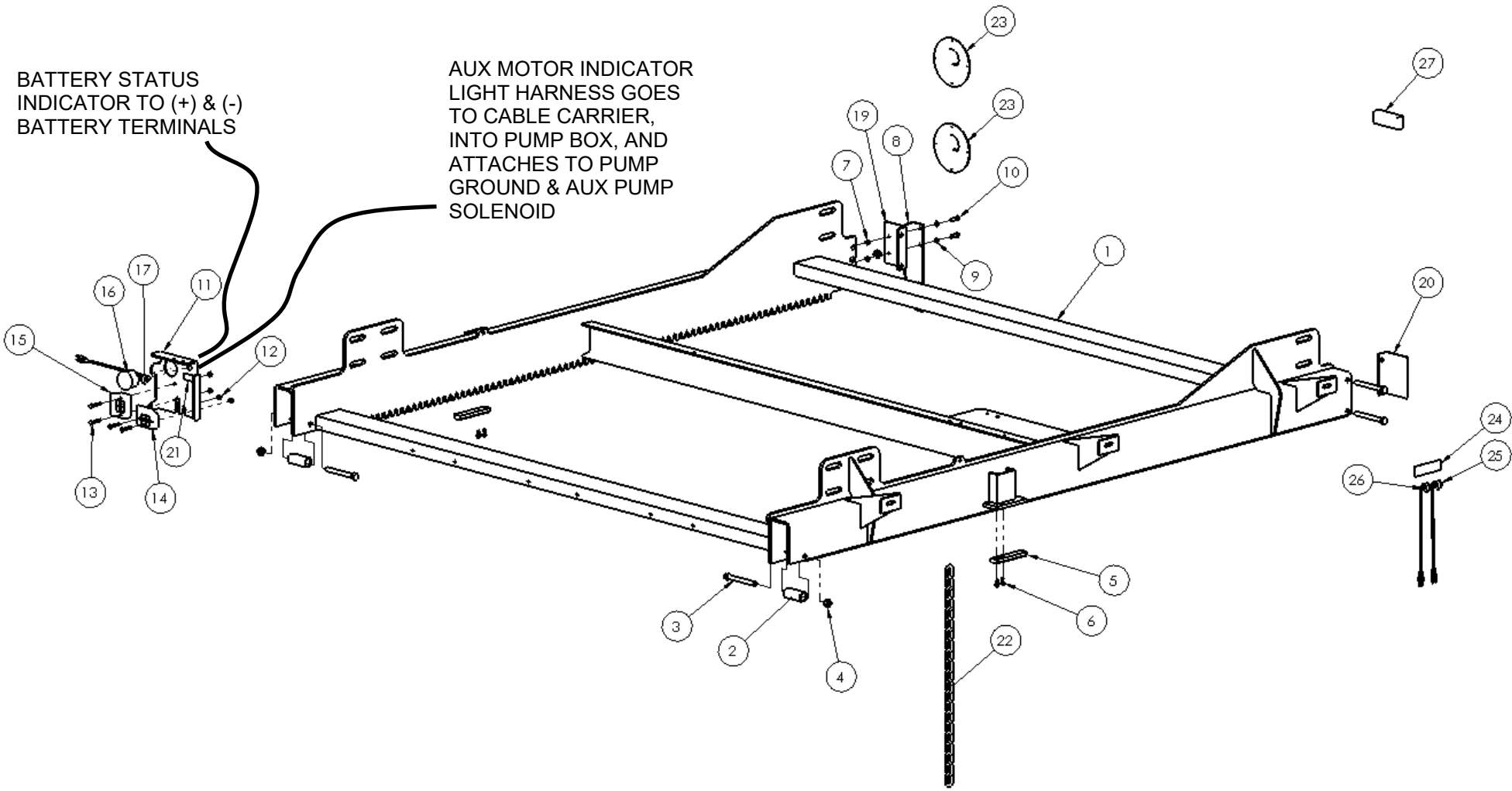
ITEM	PART NUMBER	QTY	DESCRIPTION	NOTE:
1	91318610	1	TRACK FRAME	NEW TRACK FRAME SHOWN WHICH INCLUDES REMOVABLE REAR STOPS AND COVERS FOR SERVICING
2	27865103	2	MOUNT FRAME STOP	REPLACES 27865101
3	7500010-44	2	HEX BOLT, 1/2-13X4-1/2, GR8	
4	75085162	2	LOCK NUT, NYLON 1/2-13	
5	39035700	2	UPSTOP BEARING	
6	75086874	4	SCREW, 1/4-20 X 5/8 HEX HEAD SELF TAPPING	
7	75085187	2	CENTER LOCK NUT, 5/16-18	REPLACES THREADED INSERT 75087691 USED ON TRACK FRAMES WITH PERMANENT REAR STOPS
8	27862240	1	FLAG, PROXIMITY SWITCH	
9	75088080	2	LOCK WASHER, 5/16"	
10	75086035	2	HEX BOLT, 5/16-18 X 1", GR 8	
11	91318650	1	CONTROL PANEL W/ INDICATOR HOLES	
12	75085161	4	LOCK NUT, NYLON, 1/4-20	
13	75086008	4	HEX BOLT, 1/4-20X1-1/2	
14	27897072	1	IN/OUT TOGGLE SWITCH, 6" LEAD	
15	27897071	1	UP/DOWN TOGGLE SWITCH, 6" LEAD	
16	91160691	1	BATTERY STATUS INDICATOR	
17	42694117	1	LIGHT, LED, RED	
18	91318971	1	PRIMARY CONTROL HARNESS, NOT SHOWN	
19	91318035	1	TRACK COVER, GTSL REAR FOR FLA	DRILLED FOR PROX SWITCH FLAG
20	91318036	1	TRACK COVER, GTSL REAR	
21	91318990	1	DECAL, AUX MOTOR IN USE IND	
22	91230980	1	CHAIN, TRANSIT LATCH, 21 LINKS	
23	91318920	1-4	CUP, RECESSED TOGGLE SWITCH	EXTERIOR/INTERIOR WALL MOUNTED
24	91230880	1	DECAL, LIFTGATE STORAGE STATUS	NOSE MOUNTED
25	91230881	1	LIGHT, LED MARKER, GREEN AUX	NOSE MOUNTED
26	91230882	1	LIGHT, LED MARKER, RED	NOSE MOUNTED
27	91230883	1	GREEN LAMP	INTERIOR MOUNTED

WALTCO
Lift Corp
DOMINOS GTSL-33

REVISED: 5/2015
REV. 01

PM

TRACK FRAME



ITEM	PART NUMBER	QTY	DESCRIPTION
1	75089473	1	BATT CABLE, DUAL #1, 36FT LONG
2	75050009	2	CABLE CLAMP, BULKHEAD
3	75086062	4	HEX BOLT, 1/4-20X3/4 LG GR. 5 PLATED
4	75088079	4	LOCK WASHER, 1/4 PLATED
5	27884010 ^A	1	SECONDARY PUMP SUCTION LINE
6	27884020 ^A	1	SECONDARY PUMP PRESSURE LINE
7	27884030	1	RETURN TUBE
8	27884040	1	PRIMARY PRESSURE LINE
9	27891005GV	1	PUMP BOX
10	27897000	1	MAIN WIRING HARNESS WITH DIODE BAR
11	75086720	4	SCREW,#5-40X1/2" ,ROUND HEAD PLATED
12	75072160	4	NUT, 5-40, PLATED
13	70427800	1	PRIMARY PUMP
13	7043002-1	1	PRIMARY PUMP MOTOR
13	70092403	1	PRIMARY MOTOR SOLENOID
14	70427850 ^A	1	SECONDARY PUMP
14	70430696	1	SECONDARY PUMP MOTOR
14	75089833	1	SECONDARY MOTOR SOLENOID
15	70427880	1	VALVE BLOCK, GT GRAVITY DOWN
	70427875	1	VALVE BLOCK, GT POWER DOWN
16	7500081-1	2	TEE,#6 JICM X #6 JICM X #6 JICF BRANCH 6 SGX
17	7500090-2	2	LONG STRAIGHT THREAD CONNECTOR #6 SAE O-RING M TO #6 JICM
18	75082869	3	ELBOW, 90°, 9/16-18 37° MALE X 9/16"-18"O"RING
19	75082866	2	ELBOW, 45°, MALE, 9/16-18 37°X 9/16"-18"O" RING.
20	75086055	2	HEX BOLT, 3/8-16X3/4 GR 5
21	75088081	4	LOCK WASHER, 3/8"
22	75088265	2	STRT THRD CONNCTR, #8 SAE O-RING-#8 SAE JIC 37 FL
23	90908980	1	CARTRIDGE, 4 WAY, 3 POS

ITEM	PART NUMBER	QTY	DESCRIPTION
24	90908981 ^A	1	CARTRIDGE, 4 WAY, 3 POS POWER DOWN
	99533933		CARTRIDGE, 3-WAY/2-POS VALVE GRAVITY DOWN
25	91160931	4 ^B	COIL, HIGH WATT, 10VDC, 25WATT MALE TERM
26	75089872 ^A	1	SWITCH, TOGGLE SPST, IP67,W/QD MCMaster 7172K21 W/QD OR EQUIV
27	85803921	3	RELAY,12 VOLT/30 AMP MAX.
28	27391301	2	HOLD DOWN, POWER UNIT COVER
29	75082882	1	ADAPTER,#6 SAE ORB X #6 JIC
30	7500099-1	3	EXTENDED 90 BEND 6 CC5OX-S #6 O-RINGM TO #6 JIM
31	75086056	2	HEX BOLT, 3/8-16X1, GR 5 PLATED
32	91318971 ^C	1	PRIMARY CONTROL HARNESS, 22FT
33	75082051	1	CYCLE COUNTER

^A OPTIONAL – DUAL PUMP OPTION

^B QTY IS 3 WITH GRAVITY DOWN POWER UNIT

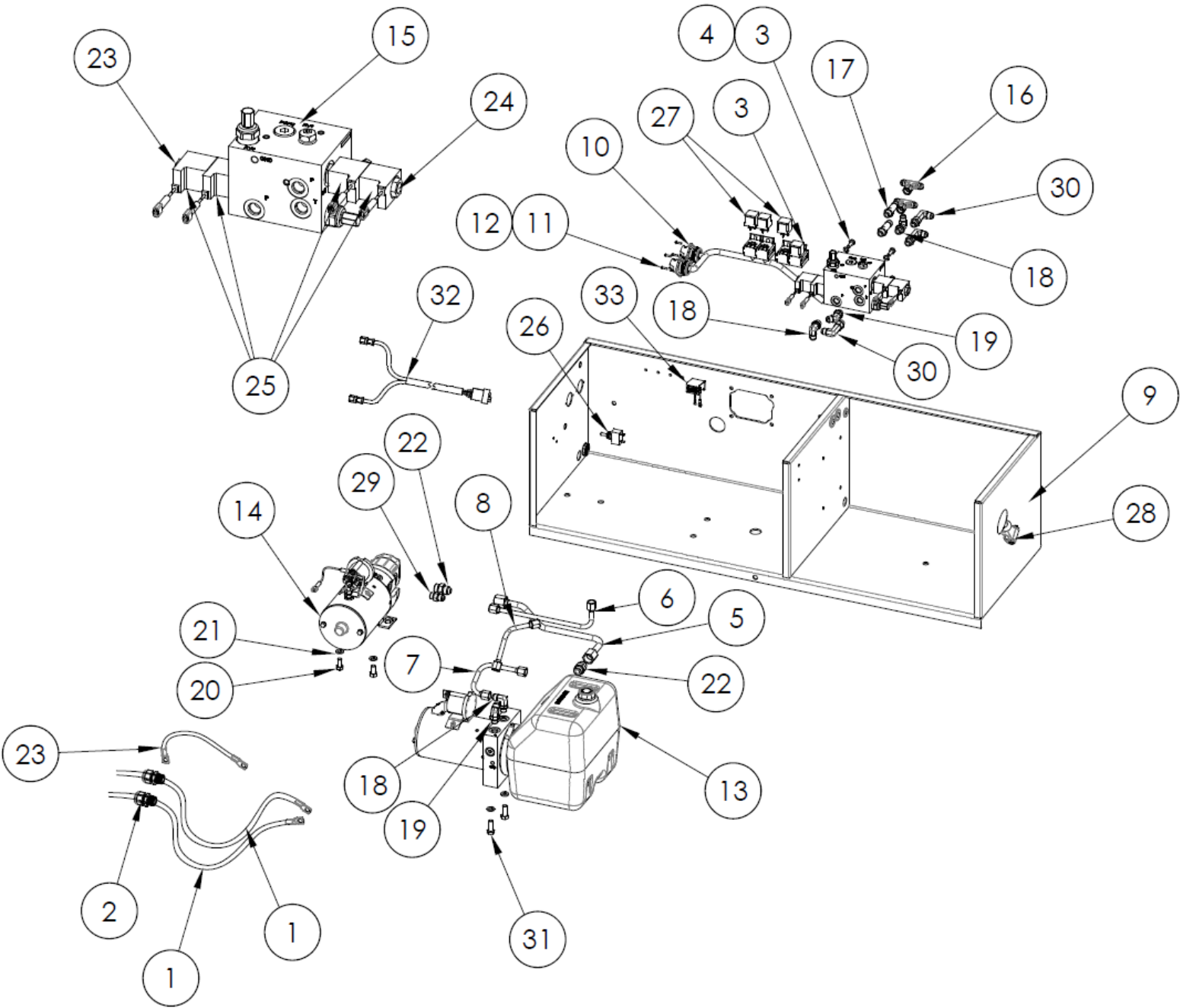
^C Routed through Cable Carrier to Destination

WALTCO
LIFT CORP
DOMINO'S GTSL-33

REVISED: 5/2015
REV. 01

PM

PUMP BOX



WALTCO
LIFT CORP
DOMINO'S GTSL-33

Indicator Light Addendum



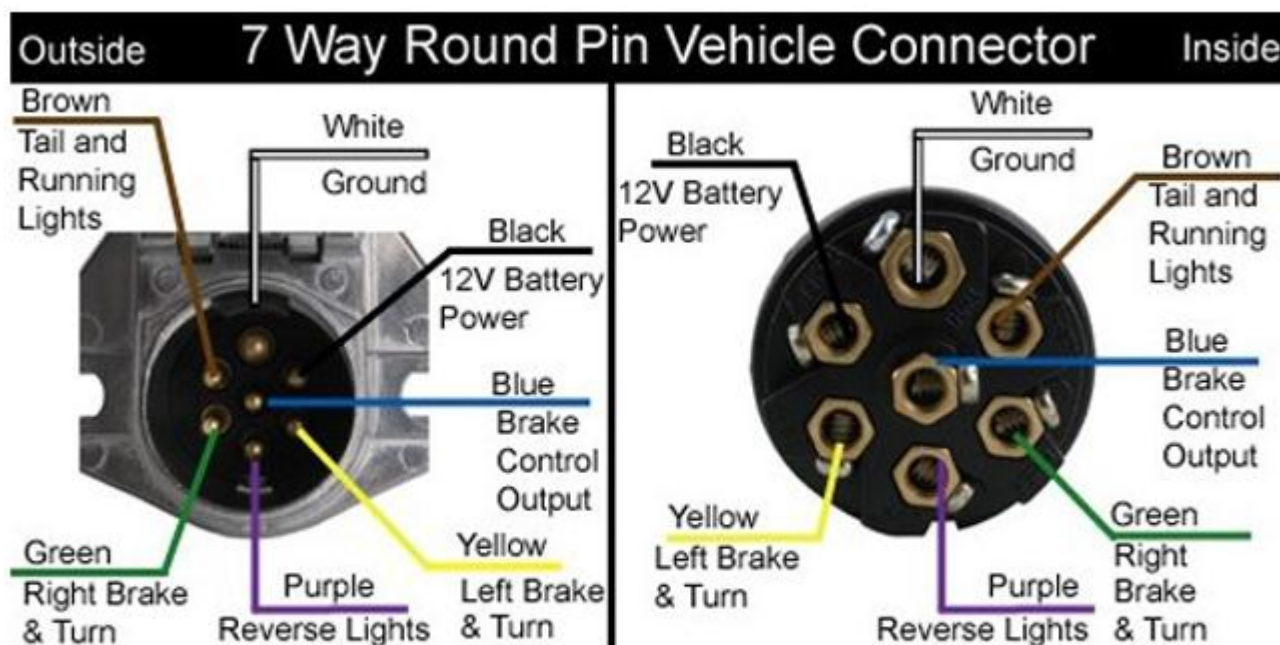
Your liftgate has been equipped with indicator lights that shows the driver (via his rear view mirror) if the gate is stored or deployed. The green indicator light means it is stored. The red indicator light means it is deployed. Green means go and red means whoa.

To wire the lights, chase the cable supplied (already attached and wired into the liftgate), consisting of three wires: one green w/white stripe, one purple w/white stripe and one red w/white stripe and chase it to the front of the trailer.

Mount the light bracket to the front corner of the trailer as shown above and install the supplied LED light

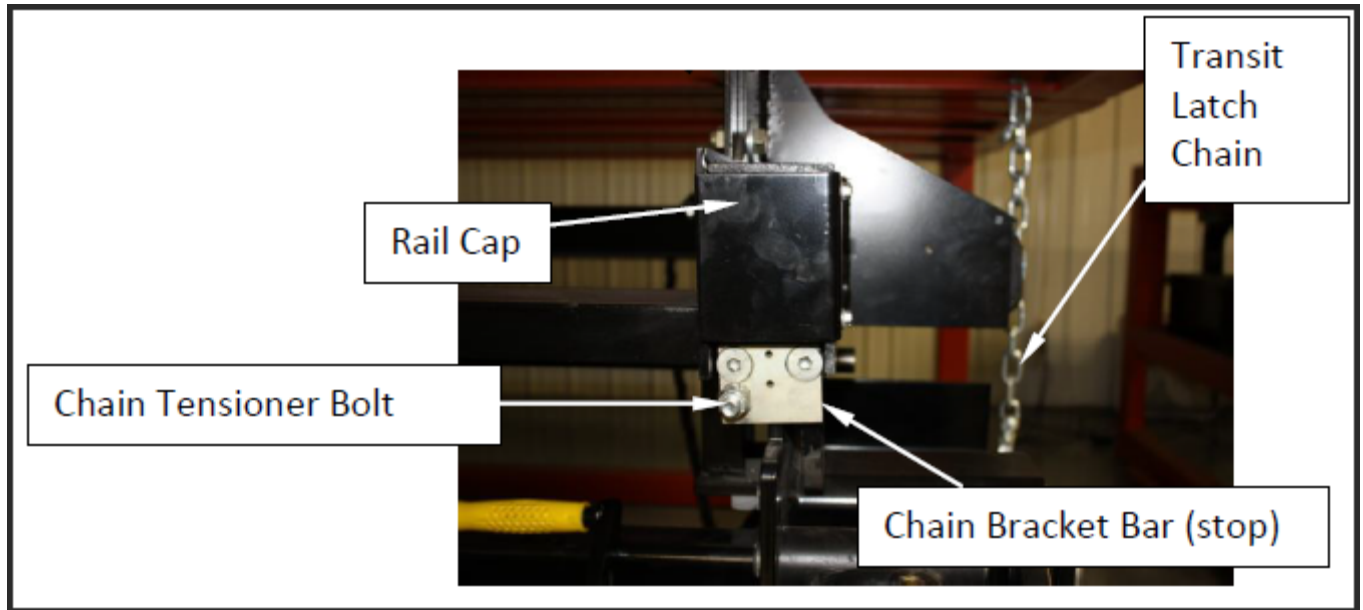
Indicator Light Addendum

Connect the green w/white wire to the positive side of the green LED light. Connect the purple w/white wire to the positive side of the red LED light. Connect the red w/white wire to 12v battery power pin in the 7-way plug via a 5 amp fuse. Connect both negative sides of the LED lights to the ground pin in the 7-way plug.



91265801 REV 01 2/13

Roller Wear Check



Roller, Dominos Spec
27866535/9123053



Roller Bearing
10010197



After removing the wheels, inspect the axles for wear. If axles are worn, they can be replaced with the Waltco two-piece axle replacement kit. The **part # for the kit is 80004736**

1. Remove the rail cap to expose the 1st roller in the track – Check must be done to both sides
2. Lower lift gate to set on top of floor jack – raise jack just enough to take weight off the front roller
3. Replace all rollers if excessive side to side or up and down movement is noticed. Movement indicates the bearing is worn out
4. Fork lift or crane is required to slide the lift gate totally out to replace all (8) Rollers if the liftgate is not equipped with Serviceable Rail End Cap kits. These kits are field retrofitable

Bearing Replacement Procedure

1. Remove worn bearing using step tool and 3 lb hammer. Step tool to be 1.20 dia for ¾" in length then 1.30 dia the rest of the shaft.



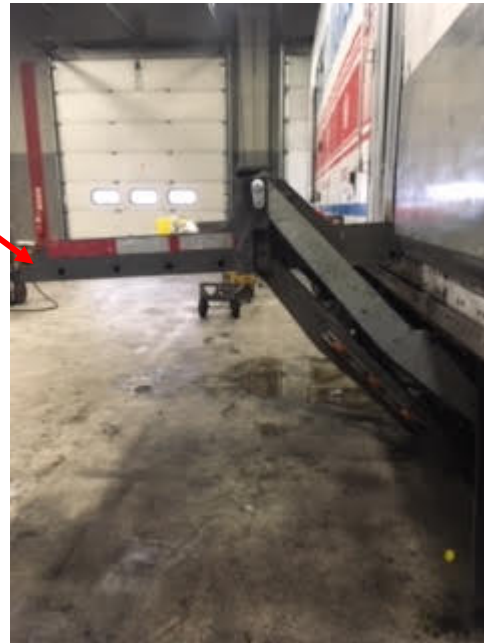
2. Install new bearing using same tool and hammer. Bearing should be flush on both sides with roller. **NOTE: bearing is press in and does not require any adhesive.**

Arm Bearing Pin Check

With platform at bed level, when a noticeable downward slant is seen, this is an indication of bearing wear in one or more of the liftgate parallel and or lift arms

With the platform on the ground check for play in the parallel arms by attempting to twist the arms from side to side

Any movement would indicated the parallel arms bearings need to be replaced



Typical Thickness of Waltco Bearing
Worn bearing below was removed from this liftgate

Worn by 1/32"

New



Gen 2 Rail Stop Bumper and Guide part numbers and Wear Check

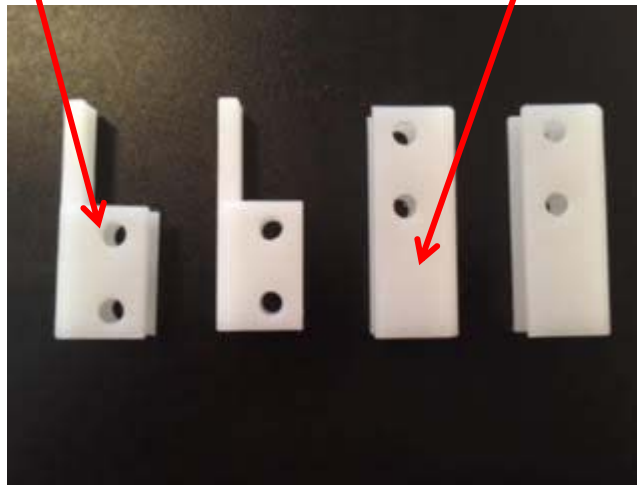
Note: please refer to Mount Frame Parts Breakdown, items #5 & #6

These are mounted on the left or rear mount plate where the wheels are mounted

Part # 27821290-Stop Bumper

These are mounted on the Right or Front mount plate

Part # 27821285-Stop Bumper and Guide



The wall thickness of the material is 1/8" or .125. When the wall thickness has been worn to half that thickness and measures less than 1/16" or .0625, the guides and stops should be placed. This is to provide proper tracking in and out and for correct end of travel within the rails.

Switch Replacement

Kits are for different QTYs. NOTE: there are 4 switches per trailer and this switch will be mounted upside down to fit inside existing wall pocket. Do not mount up-right or water will get into the switch.

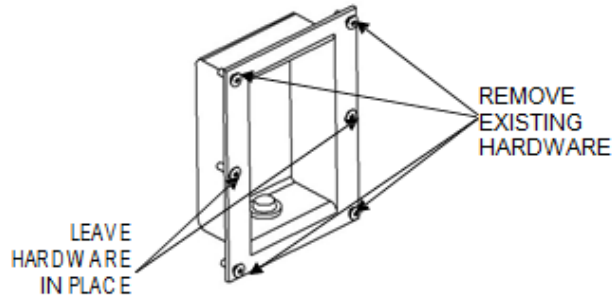
Kit for 1 switch - 91160849

Kit for 2 switches - 91160839

Kit for 4 switches - 91160841

This kit replaces the auxiliary control push button switches on side mount GT liftgates with toggle style switches.

Remove the switch and the four corner fasteners. Do not remove the center-mid hardware.

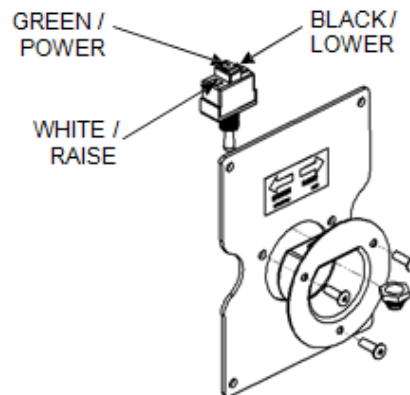


Assemble raise/lower switch plate as shown. Use rivets provided to secure the switch housing cup to the mounting plate.

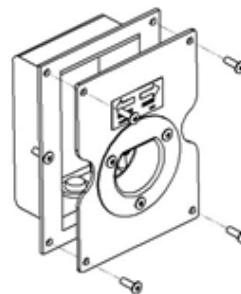
Attach ring terminals provided to existing harness. Use heat gun to seal terminals. Connect to toggle switch as shown.

Insert toggle switch through large hole in plastic housing and secure with switch seal.

Apply raise / lower decal provided.



Attach assembled adapter plate to the trailer mounted bracket using the rivets supplied as shown.



Hydraulic Oil Changing Procedure

Hydraulic Oil Recommendations

NOTE: This decal is located on the hydraulic reservoir.

WALTCO	
Purchase in 1 gallon containers from Waltco Parts Hotline 1-800-411-5685 www.waltco.com	
Hydraulic Fluid Chart	
Temp Range °F	Waltco Fluid Part #s and Acceptable Fluids
0 ⁰ to 120 ⁰	Waltco Biodegradable LiftLube Part # 85803860
	Shell Tellus S2 V 32
	Chevron Rando HDZ 32
-20 ⁰ to 90 ⁰	Waltco Biodegradable LiftLube Arctic Part # 85803866
	Waltco All Season Hyd Oil Part # 85803867
	Shell Tellus S2 V 15
	Mobil DTE 10 Excell 15
	Chevron Rando HDZ 15
8/14	80101494

Hydraulic Oil Change Procedure

Replace hydraulic oil in spring and fall intervals in colder, winter climates.

1. Properly locate platform
 - a. Gravity down units – lower to ground level
 - b. Power down units – raise to bed level
2. Using a clean syphon, empty oil from hydraulic reservoir
3. Inspect cleanliness of empty reservoir
 - a. If clean, proceed to next step
 - b. If dirt is visible, remove power unit and clean hydraulic reservoir. **NOTE: For power down units, safely support platform prior to disconnecting hoses from power unit.**
4. Add approximately 4.0 liters of new hydraulic fluid to reservoir and fill to “Fill Line” marked on power unit (approx. 1” below the top of the reservoir)
5. Complete 3 cycles of raise and lower and 2 cycles of in and out to bleed any air that may have been introduced
6. Put breather back on reservoir

How To Order Parts

Repairs should be made only by authorized mechanics using WALTCO Replacement parts.

When ordering repair or replacement parts, please include all the information asked for below. If this information is not available, a complete written description or sketch of the required part will help WALTCO identify and deliver the needed part to you.

THE FOLLOWING INFORMATION MUST BE INCLUDED:

1. SERIAL NUMBER - [WALTCO liftgate serial numbers can be found on the Specification Tag attached to the mount frame.]
2. MODEL NUMBER
3. CAPACITY
4. PLATFORM SIZE

THEN INCLUDE THE FOLLOWING INFORMATION:

5. PART NUMBERS
6. DESCRIPTION
7. QUANTITY REQUIRED

MAIL, E-MAIL OR PHONE YOUR REQUEST TO:

Waltco Lift Corp
285 Northeast Avenue
Tallmadge, OH 44278
1-800-411-5685
FAX: 1-800-411-5684
E-MAIL: parts@waltco.com

ALL PARTS ARE F.O.B. FROM THE SHIPPING FACTORY

PLEASE NOTE:

To assure you of continuing and effective quality control, our warranty policy permits replacement of hydraulic cylinders, valves and motor pump units when their factory seals are intact. Parts under warranty will be exchanged promptly after careful inspection of the returned assemblies.

IMPORTANT

WARNING

Improper operation and maintenance of this liftgate could result in severe personal injury or death.

Read and understand the contents of liftgate Owner's manual and all warning and operation decals before operating and/or performing maintenance on this liftgate.

**For SAFETY information on this liftgate see
Chapter 1 of Owner's manual**