



waltco.com
parts@waltco.com

Tech Support 330.633.9191
Waltco Parts Dept. 800.411.5685

Domino's Pizza

GTSL Tech Manual Gen 1 Chain and Sprocket Drive



**Waltco Lift Corp.
Corporate Office**
285 Northeast Ave.
Tallmadge, OH 44278
P: 330.633.9191
F: 330.633.1418

**Waltco Lift Corp.
Corporate Office**
620 S Hambledon Ave.
City of Industry, CA 91744
P: 626.964.0990
F: 626.964.0149

Table of Contents



Improper operation and maintenance of this liftgate could result in severe personal injury or death.

Read and understand the contents of the owner's manual and all warning and operation decals before operating and/or performing maintenance on this liftgate.

| | |
|---|-------|
| INTRODUCTION..... | 3 |
| LIFTGATE TERMINOLOGY..... | 4-5 |
| KEY COMPONENTS | 6-8 |
| SINGLE / DUAL PUMP | 9 |
| HYDRAULIC SCHEMATIC | 10 |
| SINGLE PUMP ELECTRICAL SCHEMATIC | 11 |
| DUAL PUMP ELECTRICAL SCHEMATIC | 12 |
| TROUBLESHOOTING GUIDE..... | 13-17 |
| ONE PIECE GALVANIZED PLATFORM PM | 18-19 |
| MOUNT FRAME PM | 20-21 |
| TRACK FRAME PM..... | 22-23 |
| HYDRAULIC LAYOUT PM | 24-25 |
| HYDRAULIC AND ELECTRICAL COMPONENTS | 26-27 |
| ELECTRICAL COMPONENTS | 28-29 |
| COMMON PARTS LIST..... | 32 |
| CHAIN ADJUSTMENT TIMING..... | 33-35 |
| NEW CHAIN INSTALLATION | 36 |
| ROLLER WEAR CHECK..... | 37 |
| SLIDER RAIL SHIM CHECK..... | 38 |
| OIL CHANGING PROCEDURE..... | 39 |
| SWITCH REPLACEMENT | 40 |
| HOW TO ORDER PARTS..... | 41 |

Introduction

Each Waltco liftgate is manufactured to stringent quality standards for years of reliable service. To ensure maximum performance of your Waltco liftgate, always specify and use “OEM Parts” from Waltco.

Service and repair should only be performed by an authorized Waltco distributor. For information on the nearest authorized Waltco distributor contact:

Waltco Lift Corp.

285 Northeast Avenue

Tallmadge, OH 44278

Phone: 800.411.5685

Fax: 800.411.5684

E-mail: parts@waltco.com



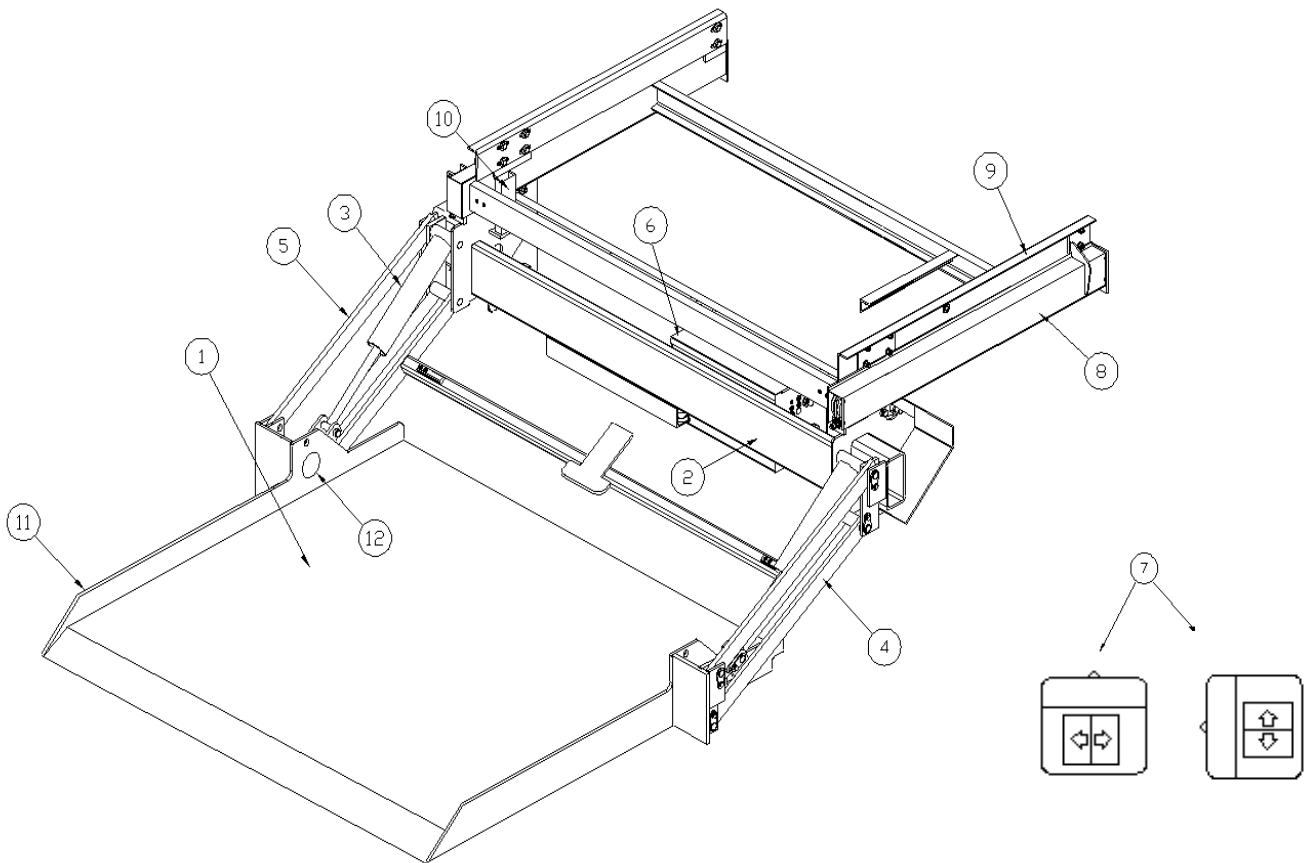
This is the safety alert symbol. This manual uses this symbol to alert you to potential personal injury hazards. Obey all safety messages that follow this symbol to avoid personal injury or death.

The use of non-standard or makeshift parts can be extremely hazardous and result in serious injury or death.

Every vehicle that has a WALTCO Liftgate must have legible WARNING AND OPERATION DECALS clearly posted on the vehicle and an OWNER’S MANUAL in the vehicle at all times as a guide for proper operation and maintenance.

Liftgate Terminology

1. Deck
2. Mount Tube
3. Lift Cylinder
4. Lift Arm
5. Parallel Arm
6. Pump Box
7. In/Out, Raise/Lower Switches
8. Slide Tube
9. Mount Angles
10. Up Stops
11. Transit Latch Bail
12. Platform Light



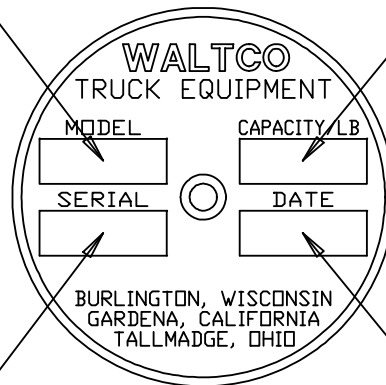
Liftgate Terminology

| EXPLANATION OF SPECIFICATION TAG | | |
|----------------------------------|-----------------------|-----------|
| MODEL NO. | DESCRIPTION | CAPACITY |
| GT33 | GT-33 SLIDER LIFTGATE | 3300 LBS. |
| GT44 | GT-44 SLIDER LIFTGATE | 4400 LBS. |

MODEL NUMBER

RATED CAPACITY

Based on an evenly distributed load on the platform flat surface



SERIAL NUMBER

of Liftgate. To be used when ordering parts or when contacting Waltco for service or warranty.

DATE OF MANUFACTURE
MONTH/YEAR

GR02685

Rear Gate
SPECIFICATION
TAG



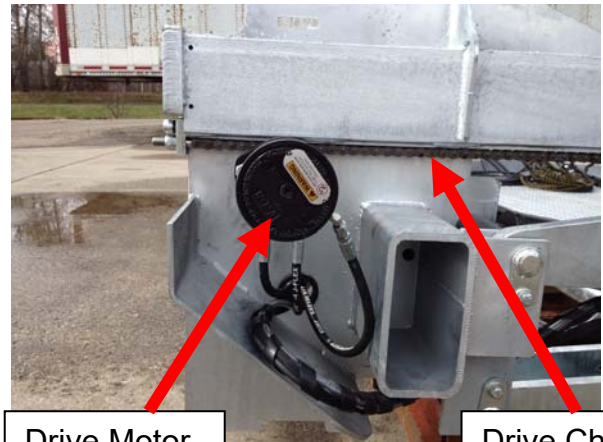
Side Gate
SPECIFICATION
TAG



Key Components



Cylinder Lock Valve & Coil Assembly



Drive Motor

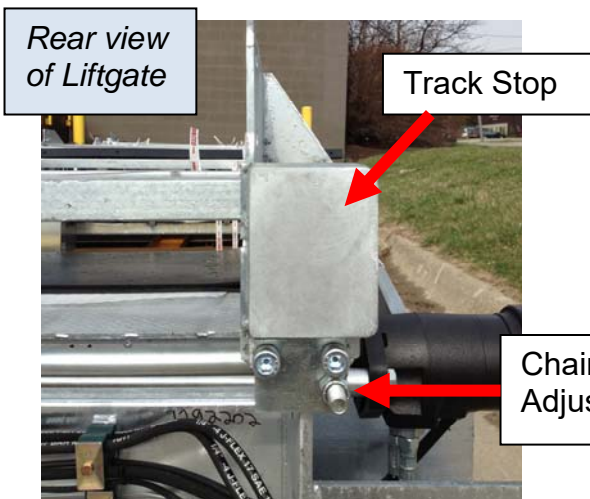
Drive Chain



Platform Work Light



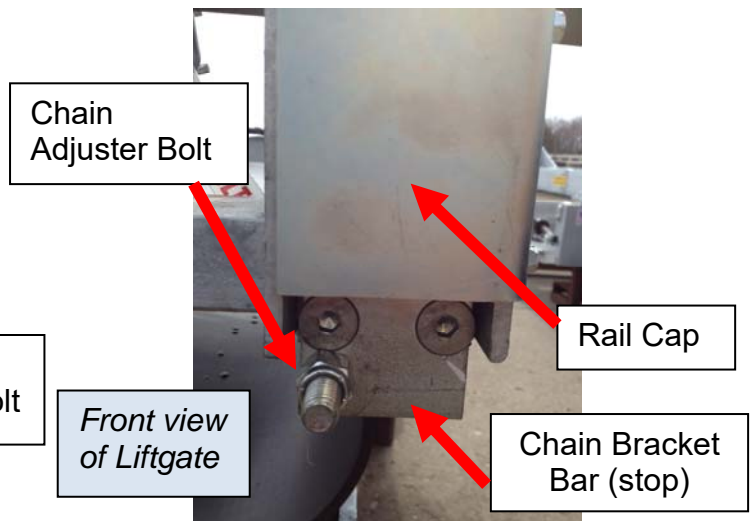
Flasher Lights



Rear view of Liftgate

Track Stop

Chain Adjuster Bolt



Chain Adjuster Bolt

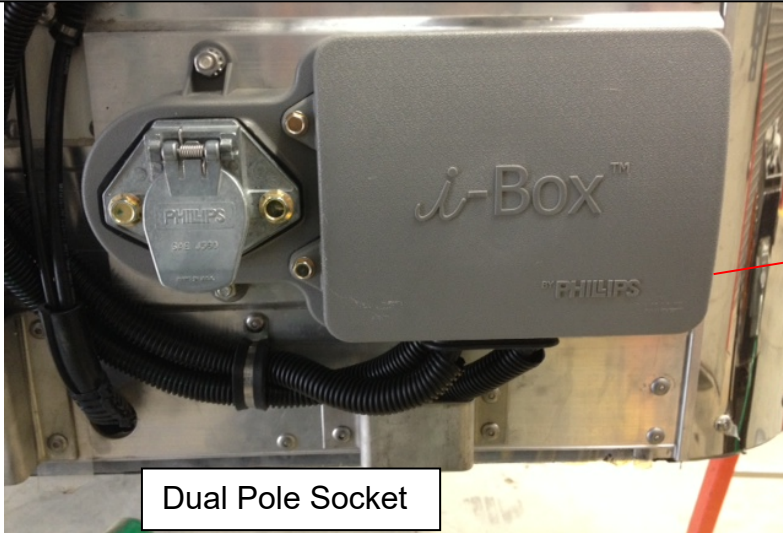
Rail Cap

Front view of Liftgate

Chain Bracket Bar (stop)

Key Components

Phillips Permalogic Charging System-Nose Box



Dual Pole Socket



Contact Phillips Industries direct for troubleshooting the Permalogic System. 800.423.4512 or www.phillipsind.com

For Purkey Nose Socket Box refer to Purkey Tech Info on the Ryder InfoCenter

Driver Platform Indicator lights



One liftgate mounted = one set of lights

Upper set of lights represent the Rear Gate

Green light - Platform is stored

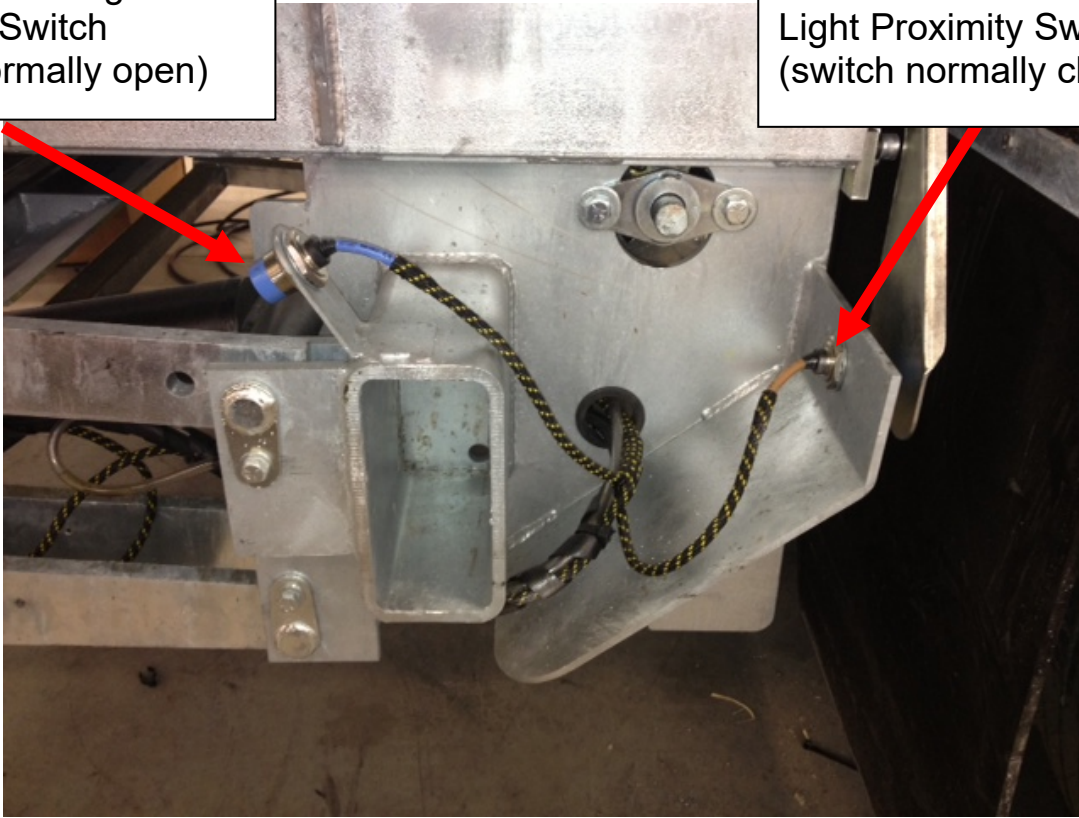
Red light - Platform is not stored

Lower set of lights represent the side gate

Key Components

Platform Door Light
Proximity Switch
(switch normally open)

Platform Work and Flasher
Light Proximity Switch
(switch normally closed)



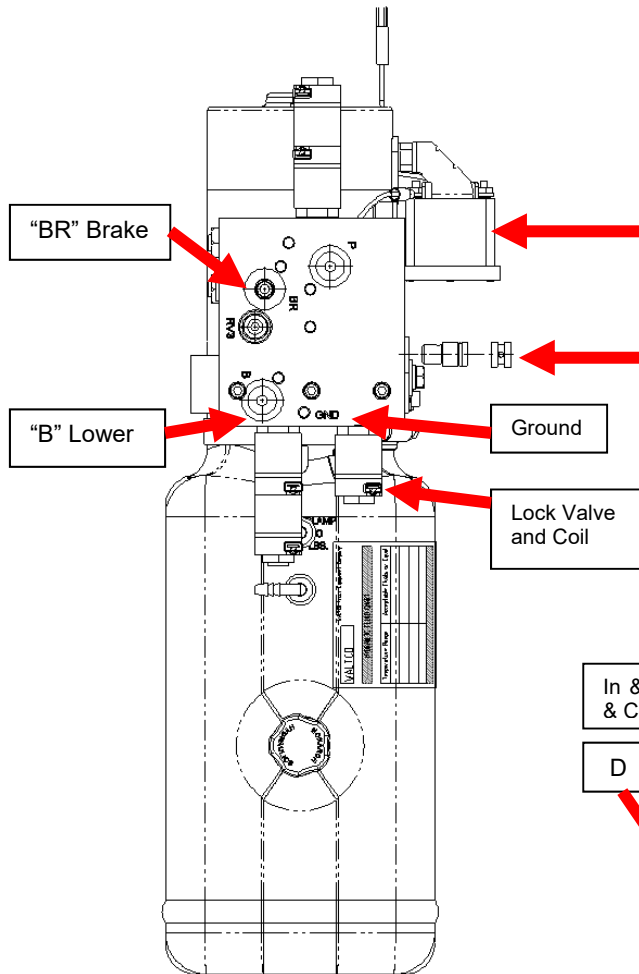
Platform Door Light
(Above side door inside trailer)

Green light indicates platform is
at floor level

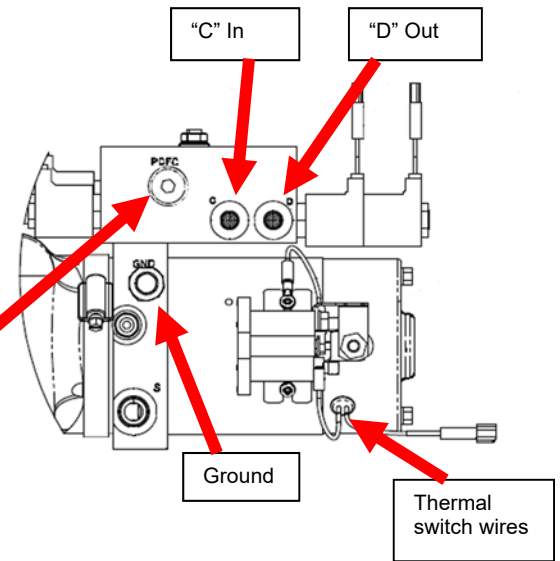


Side Loader Single/Dual Pump

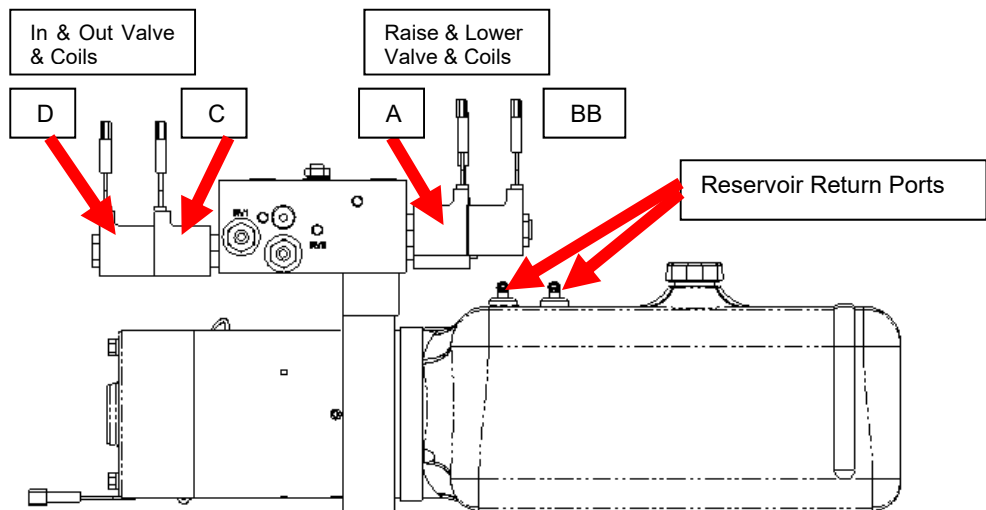
Top View of Valve Body



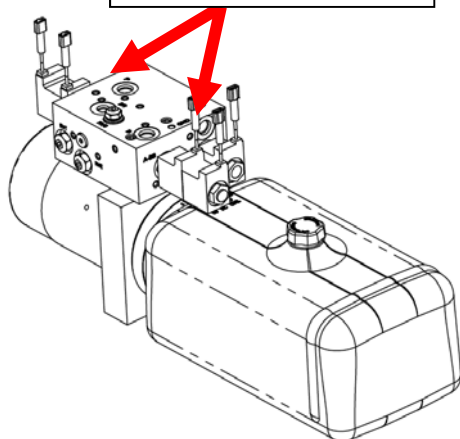
Back side of Valve Body



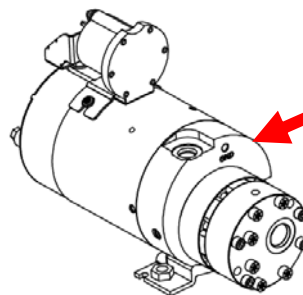
Front View of Valve Body



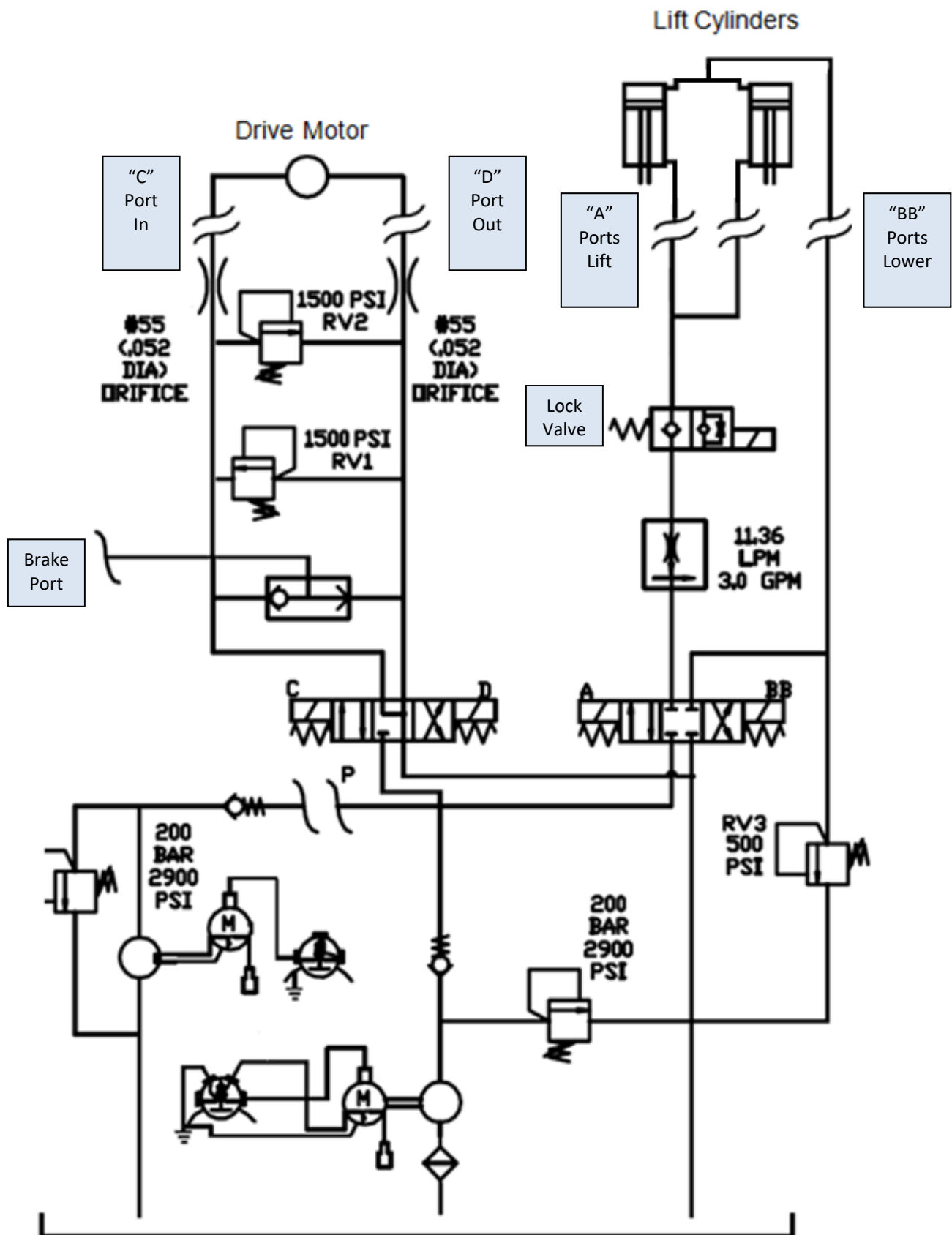
"A" Ports Driver Side/Curb Side Raise/Lower



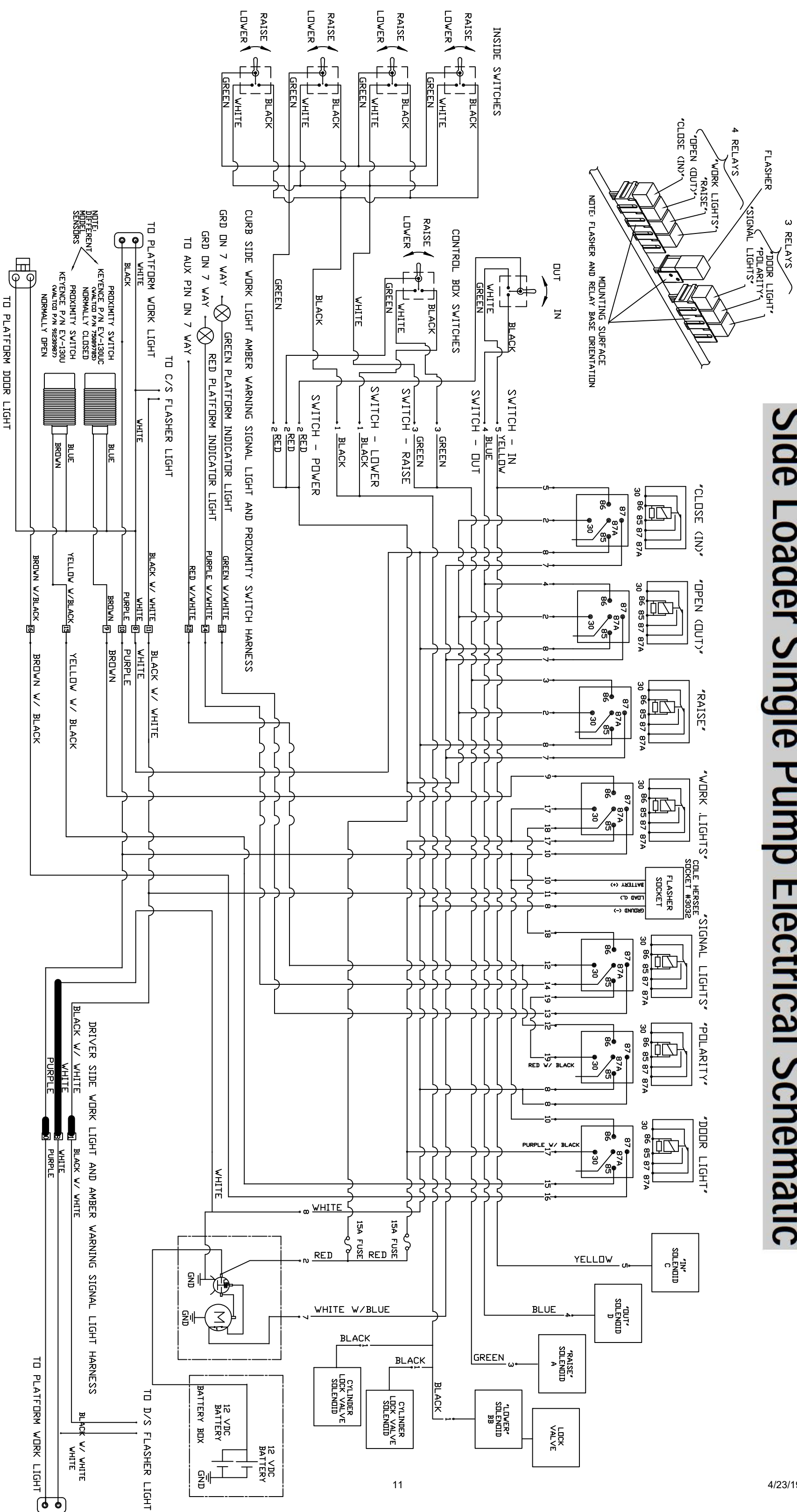
Auxiliary Power Unit



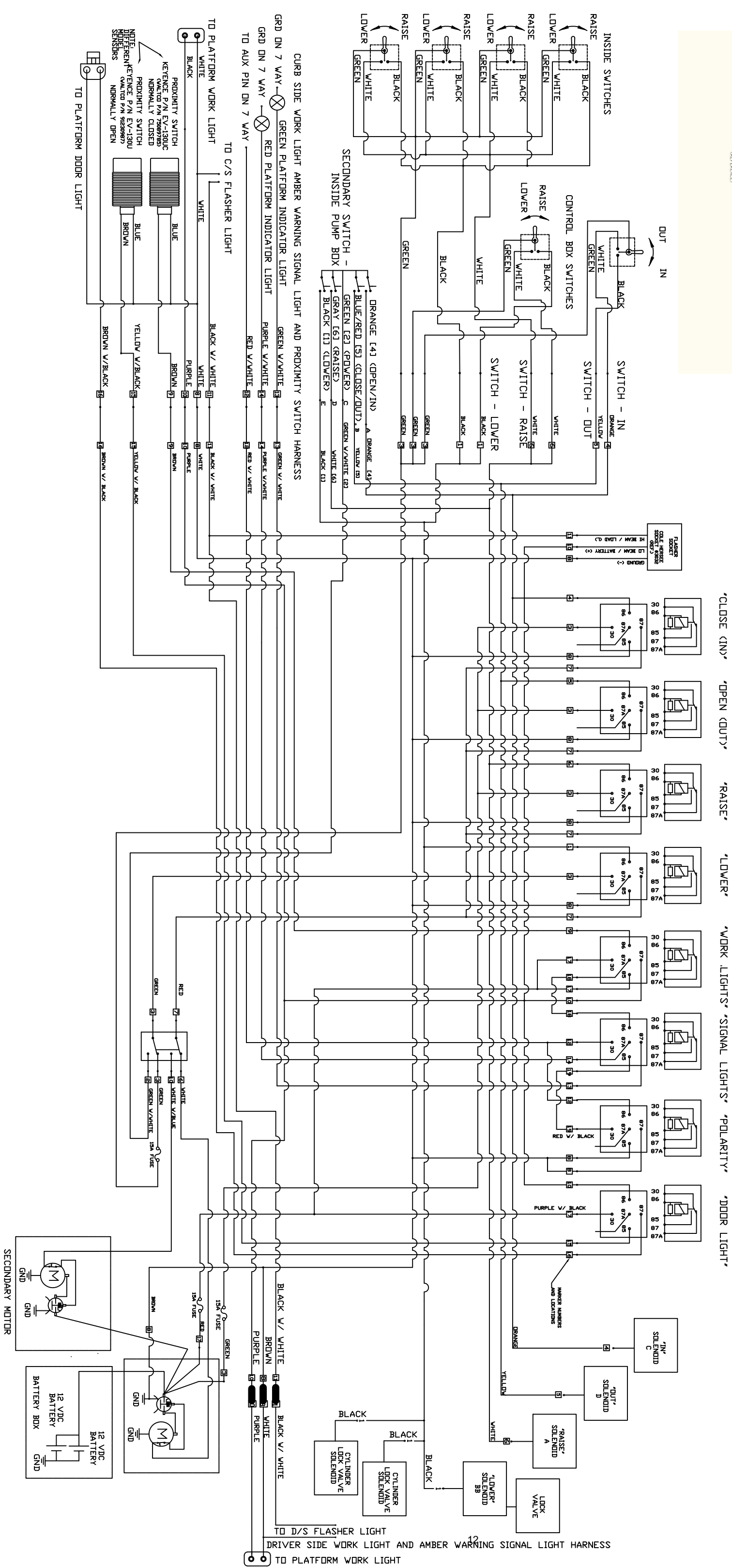
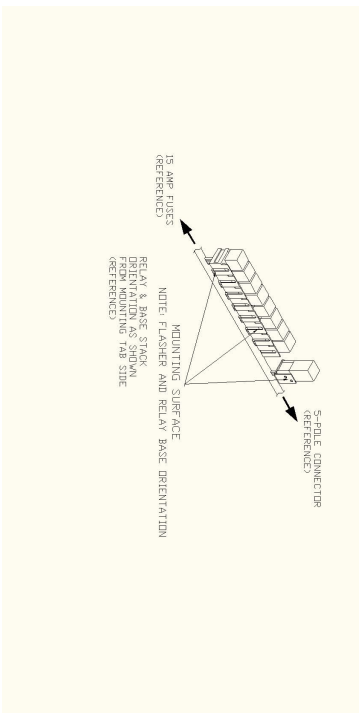
Side Loader Hydraulic Schematic



Side Loader Single Pump Electrical Schematic



Dual Pump Power Down Electrical Schematic



Domino's GT Side Loader

Trouble Shooting Guide

CHECKING THE OIL LEVEL IN THE RESERVOIR

*The liftgate is shipped with Shell Tellus 15. Check the owner's manual for additional recommended oils. Fill as required with the specified fluid in the owner's manual. Do not overfill the reservoir. **Domino's spec power unit 90908954:** Raise platform to bed level. Oil should be within ½ to the fill line (over or above) marked on the side of the oil tank. Fill as required with the specified fluid in the owner's manual.*

RECOMMENDED LIFTGATE BATTERY(S)

*Domino's preferred liftgate battery(s) as supplied at during the installation are AGM batteries. The **battery specification is Group 31, 650-750** cold cranking amps and at least **180 minutes** of reserve capacity. Batteries should be load tested before being replaced. When replacing the liftgate battery(s) inspect the cables and wires for corrosion. If the batteries are in need of replacement the charging system should be tested before releasing the trailer.*

MOTOR DOES NOT RUN

The pump motor has built in thermal protection. The thermal switch will shut the motor down if the unit exceeds 240 degrees. Once the motor cools down the switch will reset automatically.

- Check the cab shut off switch confirm that the switch is “ON” and functional. Check for voltage on both terminals of the cab switch. This voltage should be the same as the battery voltage. If you do not find battery voltage check all of the cables and wires for damage and poor connections. Clean any dirty connections and tighten any loose connections.
- Check the Circuit breaker; this is located directly on the liftgate battery(s). Check for voltage on both sides of the circuit breaker. This should also reflect battery voltage.
- Inspect the 15 amp switch fuse located in the switch wiring harness.
- Check the battery(s) for a full state of charge. Load test the lift gate battery(s). Replace any batteries that cannot be fully charged.
- Check all cables and wires for shorts and poor connections; this includes grounds and the gauge of the wire for ground. Check the cables for damages clean any dirty connections and tighten any loose connections.
- Check for voltage at the motor solenoid. Listen for a clicking noise at the motor solenoid when the raise switch is activated. If you have at least **10.5 volts** at the solenoid when the raise switch is activated and you have no voltage to the motor, and then replace the motor solenoid. If the motor does not run after confirming battery voltage at the terminal on the motor, replace the defective motor.
- If you have no power to the motor solenoid with the switch activated you could have a problem with the relays. A relay is used for each function “UP”, “IN” and “OUT” to power the motor solenoid. The switch is not directly wired to the motor solenoid. Post **87** on each relay provides power to motor solenoid. When control switch is pressed for “UP”, “IN” or “OUT”, you should get voltage at the motor solenoid. If you are not getting voltage, then you should check the relays and wiring back to the switch that powers the relays.

Domino's GT Side Loader

Trouble Shooting Guide

PLATFORM DOES NOT RAISE OR RAISES SLOW- MOTOR RUNS

If the motor is not running see the section titled “MOTOR DOES NOT RUN” before proceeding.

- Check for any mechanical obstructions or any mechanical damage. Look for any broken, bent or worn parts that could interfere with normal operation.
- Check and inspect the oil level in the reservoir. Inspect for any contamination or water in fluid. Check the fluid viscosity. **See Checking the oil level in the reservoir**
- Check the **Coil Valve (A)**. Check and confirm voltage to coil when the “**Raise**” switch is activated. Check for **10.5 volts** at the coil. Test the coil for resistance (**4.5ohms**). Confirm that the valve is magnetizing. If the coil is working the valve may need to be replaced. If the valve is not getting voltage, check all cables and wires for shorts and poor connections. Check and test the control switch.
- If your voltage is under **10.5 volts** with the “**Raise**” switch activated, check the battery(s) for a full state of charge. Load test the lift gate battery(s). Replace any batteries that cannot be fully charged.
- Check pumps pressure from the lift port (**A**). It should be **2900 psi**.

PLATFORM DOES NOT SLIDE OUT

If the motor is not running see the section titled “MOTOR DOES NOT RUN” before proceeding.

- Check for any mechanical obstructions or any mechanical damage. Look for any broken, bent or worn parts that could interfere with normal operation. Inspect the railing rollers and track system of the liftgate. Check for any obstructions in the path of travel. Lubricate all pins and bushings.
- Check the **Coil Valve (D)**. Check and confirm voltage to coil when the “**Out**” switch is activated. Check for **10.5 volts** at the coil. Test the coil for resistance (**4.5ohms**). Confirm that the valve is magnetizing. If the coil is working the valve may need to be replaced. If the valve is not getting voltage, check all cables and wires for shorts and poor connections.
- Check and inspect the hydraulic drive motor. Inspect the timing on the tracking system by taking the gate in and making sure that gate touches the stops on both sides evenly. Check to see if the axle gears are engaging evenly on both sides of the chains. Inspect the drive motor for engagement. Then check the line out pressure (**D**) it should be about **1500 psi**.

PLATFORM DOES NOT SLIDE IN - MOTOR RUNS

If the motor is not running see the section titled “MOTOR DOES NOT RUN” before proceeding.

- Check for any mechanical obstructions or any mechanical damage. Look for any broken, bent or worn parts that could interfere with normal operation. Inspect the railing rollers and track system of the liftgate. Check for any obstructions in the path of travel. Lubricate all pins and bushings.
- Check the **Coil Valve (C)**. Check for **10.5 volts** at the coil when the “**In**” switch is activated. Test the coil for resistance (**4.5ohms**). Confirm that the valve is magnetizing. If the coil is working the valve may need to be replaced. If the valve is not getting voltage, check all cables and wires for shorts and poor connections.
- Check and inspect the hydraulic drive motor. Inspect the drive motor for engagement. Then check the line out pressure (**C**) it should be about **1500 psi**.

Domino's GT Side Loader

Trouble Shooting Guide

PLATFORM WILL NOT LIFT TO FULL CAPACITY

- Check the serial tag on the liftgate and verify the load lifting capacity. Confirm that the platform is not over loaded. Confirm that the load is centered correctly on the platform.
- Check and inspect the oil level in the reservoir. Inspect for any contamination or water in fluid. Check the fluid viscosity. **See checking the oil level in the reservoir.**
- Check the battery(s) for a full state of charge. Load test the lift gate battery(s). Replace any batteries that cannot be fully charged
- Check for any mechanical obstructions or any mechanical damage. Look for any broken, bent or worn parts that could interfere with normal operation.
- Check for leaking hoses and lines. Replace any leaking lines or hoses.
- Check for air in the hydraulic system; bleed any air from the lift gate at the cylinder.
- Check the voltage at the pump motor with the “**Raise**” switch activated. The voltage should be **10.5 volts**.
- Check the pump pressure from the lift port. It should be **2900 psi**.

PLATFORM DOES NOT LOWER OR LOWERS SLOW

- Check for any mechanical obstructions or any mechanical damage. Look for any broken, bent or worn parts that could interfere with normal operation.
- Check and inspect the oil level in the reservoir. Inspect for any contamination or water in fluid. Check the fluid viscosity. **See Checking the oil level in the reservoir.**
- Check voltage on the **Lowering Valve (BB)** while the “**Lower**” switch is being activated. The voltage should be at least **10.5 volts**. Feel for a pulse on the valve. Test the coil (**4.5ohms**). Confirm that the valve is magnetizing. If the coil is good the valve may need to be replaced. If the coils are not getting power, check all cables and wires for shorts and poor connections.
- Check voltage on the **Lock Valves** while the “**Lower**” switch is being activated. The voltage should be at least **10.5 volts**. Feel for a pulse on the valve. Test the coil (**4.5ohms**). Confirm that the valve is magnetizing. If the coil is good the valve may need to be replaced. If the coils are not getting voltage, check all cables and wires for shorts and poor connections.

THE CIRCUIT BREAKER TRIPS

- Check for a direct short in power cable. Inspect for damaged or cut cable. Also check for improperly size battery cable.
- A defective motor may draw too much current. Check amperage draw from lift gate motor. At **700 psi** the motor should draw **80-100 amps**.
- Defective circuit breaker. If the breaker is suspected it should be replaced.

CONTROL SWITCH FUSE BLOWN

- Check the wiring for damages, clean dirty connections and tighten any loose connections
- Check and inspect for a short in switch control wire or switch contacts
- Check for defective coils on valves Test the coils (**4.5ohms**)

Domino's GT Side Loader

Trouble Shooting Guide

PLATFORM WILL ONLY LOWER ON ONE SIDE.

- Check for any mechanical obstructions or any mechanical damage. Look for any broken or bent parts that could interfere with normal operation.
- Test for voltage on lock valve. Check for **10.5 volts** at the coil when the “**lower**” switch is pressed. Check for defective coils on valves. Test the coil for resistance (**4.5ohms**). Confirm that the valve is magnetizing. If the coil is working the valve may need to be replaced. If the valve is not getting voltage, check all cables and wires for shorts and poor connections

PUMP MOTOR IS GETTING HOT

- The Thermal sensor is set to activate at **240 F** degrees .This condition may be normal if the liftgate motor experiences high cycles of operation in a short period of time without cooling. The Thermal switch will reset after the motor cools down.
- Check for low voltage. The voltage should be at least **10.5 volts** at the motor.
- Check batteries are fully charged, load test batteries. Check the cables for damages, clean dirty connections and tighten any loose connections.
- Check and confirm that the ground is adequate.

INDICATOR LIGHTS AT THE FRONT OF THE TRAILER ARE NOT WORKING.

- The liftgate has been equipped with two indicator lights that will allow the driver to see if the gate is stored or deployed. The “**GREEN**” indicator means that he gate is stored. The “**RED**” indicator means that the platform is deployed. In order for the indicators to illuminate, the 7 way connector will need to be plugged in.
- If the “**GREEN**” or ” **RED**” indicator lights are not getting voltage, check all cables and wires for shorts and poor connections. Check and test the “**Signal Lights Relay**” check for voltage on 87a for the “**RED**” indicator when the platform is deployed and 87 for the “**GREEN**” when the platform is stored.
- Check and inspect the proximity switch, confirm that it is functional
- Check all of the cables and wires for damage and poor connections. Clean any dirty connections and tighten any loose connections.

PLATFORM WARNING LIGHTS ARE NOT WORKING

- Check lights test the lamps to confirm that the lamp does not have a broken filament.
- Check the “**Work Lights Relay**” and confirm that the relay is operating properly.
- Check and inspect the proximity switch, confirm that it is functional
- Check all of the cables and wires for damage and poor connections. Clean any dirty connections and tighten any loose connections.

Domino's GT Side Loader

Trouble Shooting Guide

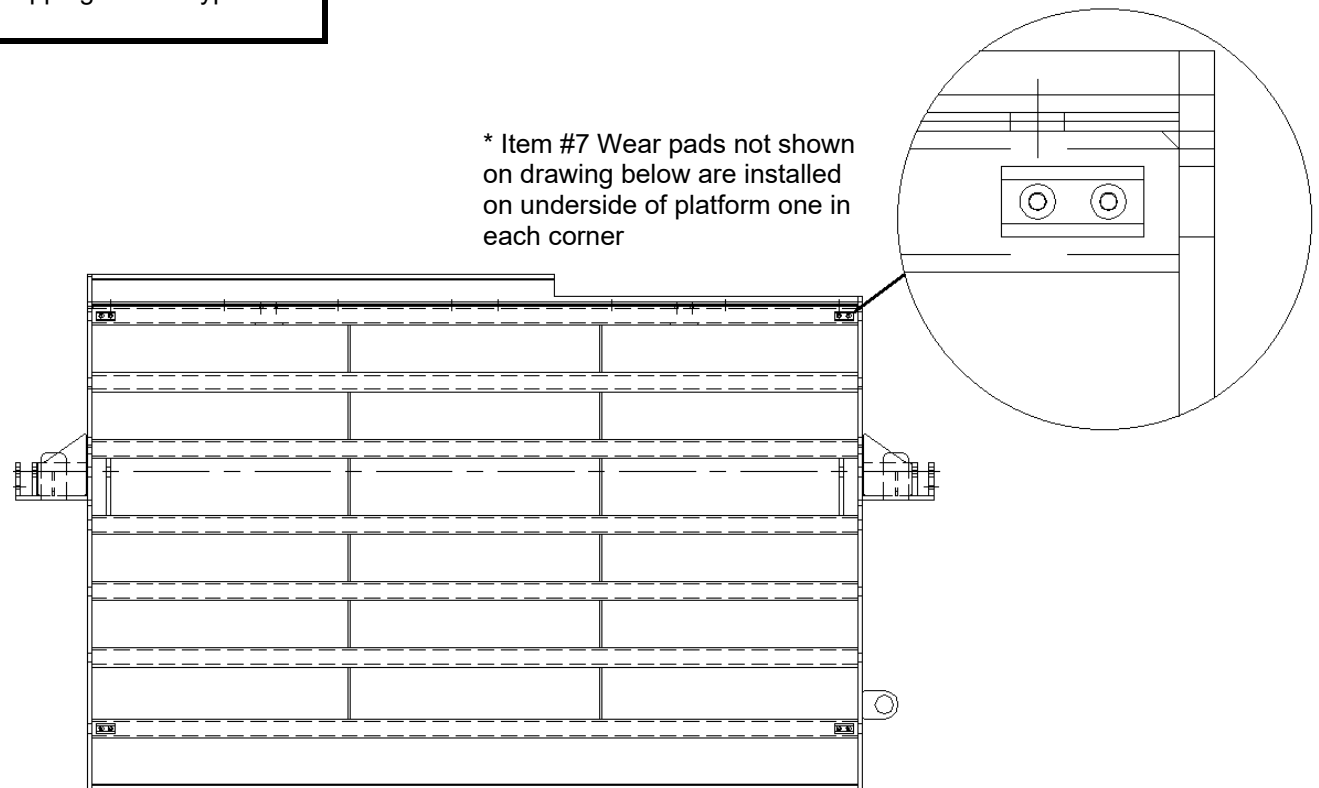
AMBER WARNING SIGNAL LIGHTS ON PLATFORM ARE NOT WORKING

- Check lights test the lamps to confirm that the lamp does not have a broken filament.
- Check the “**Signal Lights Relay**” and confirm that the relay is operating properly.
- Check and inspect the proximity switch, confirm that it is functional
- Check all of the cables and wires for damage and poor connections. Clean any dirty connections and tighten any loose connections.

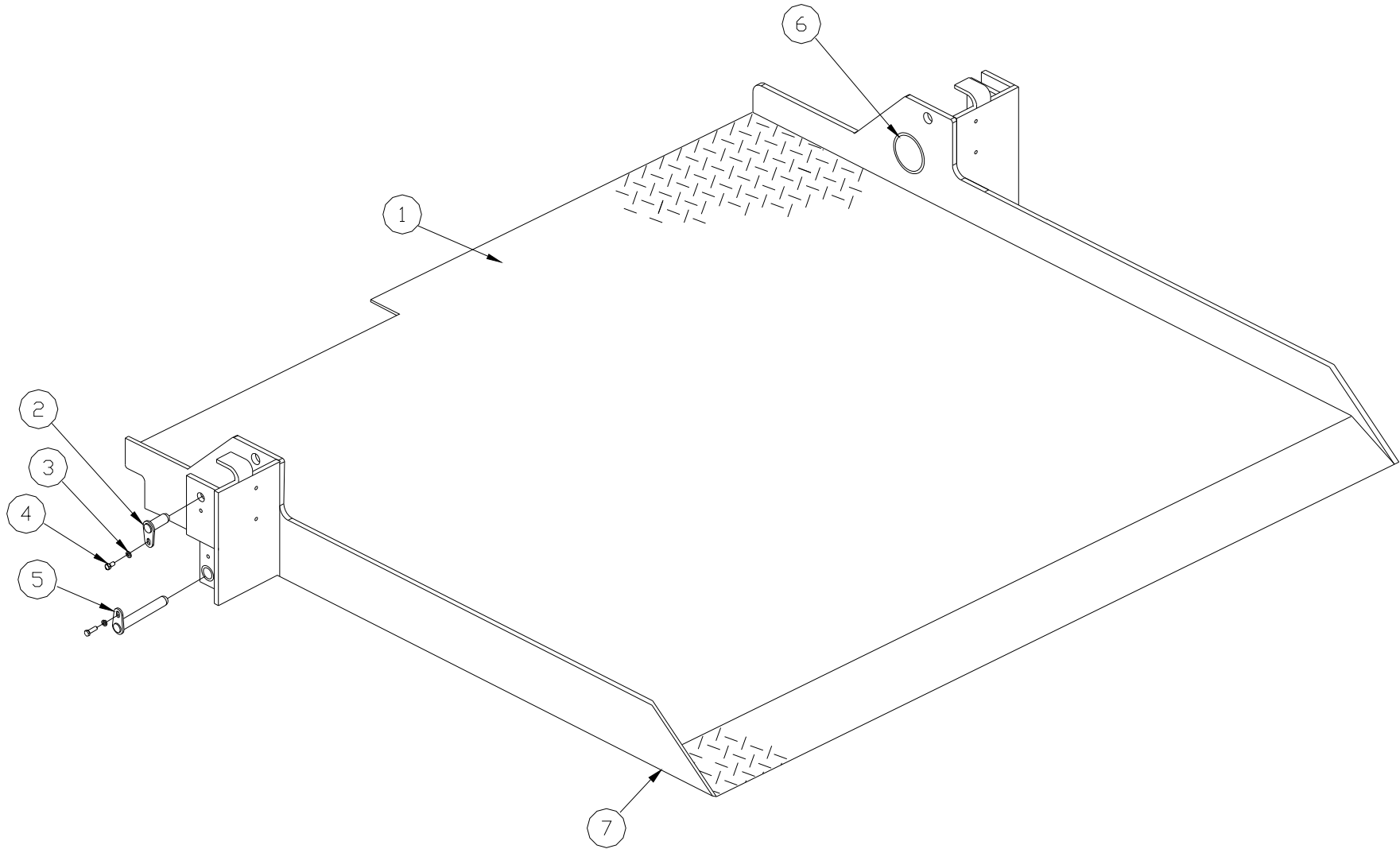
DOOR LIGHT INSIDE TRAILER TO INDICATE PLATFORM IS AT FLOOR LEVEL IS NOT WORKING.

- Check lights test the lamps to confirm that the lamp does not have a broken filament.
- Check the “**Door Lights Relay**” and confirm that the relay is operating properly.
- Check and inspect the proximity switch, confirm that it is functional
- Check all of the cables and wires for damage and poor connections. Clean any dirty connections and tighten any loose connections.

| ITEM | PART NUMBER | QTY | DESCRIPTION |
|------|-------------|-----|--|
| | 91265104 | 1 | Platform Assembly Complete, 49x80+5.5 1pc stl galv, wrk lts, rogs, yellow ramp (Includes all items listed below) |
| 1 | 91265014 | 1 | Finished Platform, 49-80+5.5 1pc, Galv 4 wear pads installed |
| 2 | 23370800 | 2 | Upper Pin Assy, 1.00x2.75 p |
| 3 | 75088255 | 4 | Washer 3/8 Stainless Steel |
| | 75088081 | 4 | Lock Washer 3/8 Plated |
| 4 | 75086055 | 4 | Hex Bolt, 3/8-16x3/4 GR5 |
| 5 | 27371002 | 2 | Lower Pin Assy, 1.00x7.0,p |
| 6 | 91129785 | 2 | Work Light,13-LED,2.5Dia, White |
| | 91129786 | 2 | Grommet,Light,2.5Dia, Black |
| 7 | *34427307 | 4 | Bearing |
| | *75086854 | 8 | 1/4-20x5/8 Self Tapping Screw Type F Plated |

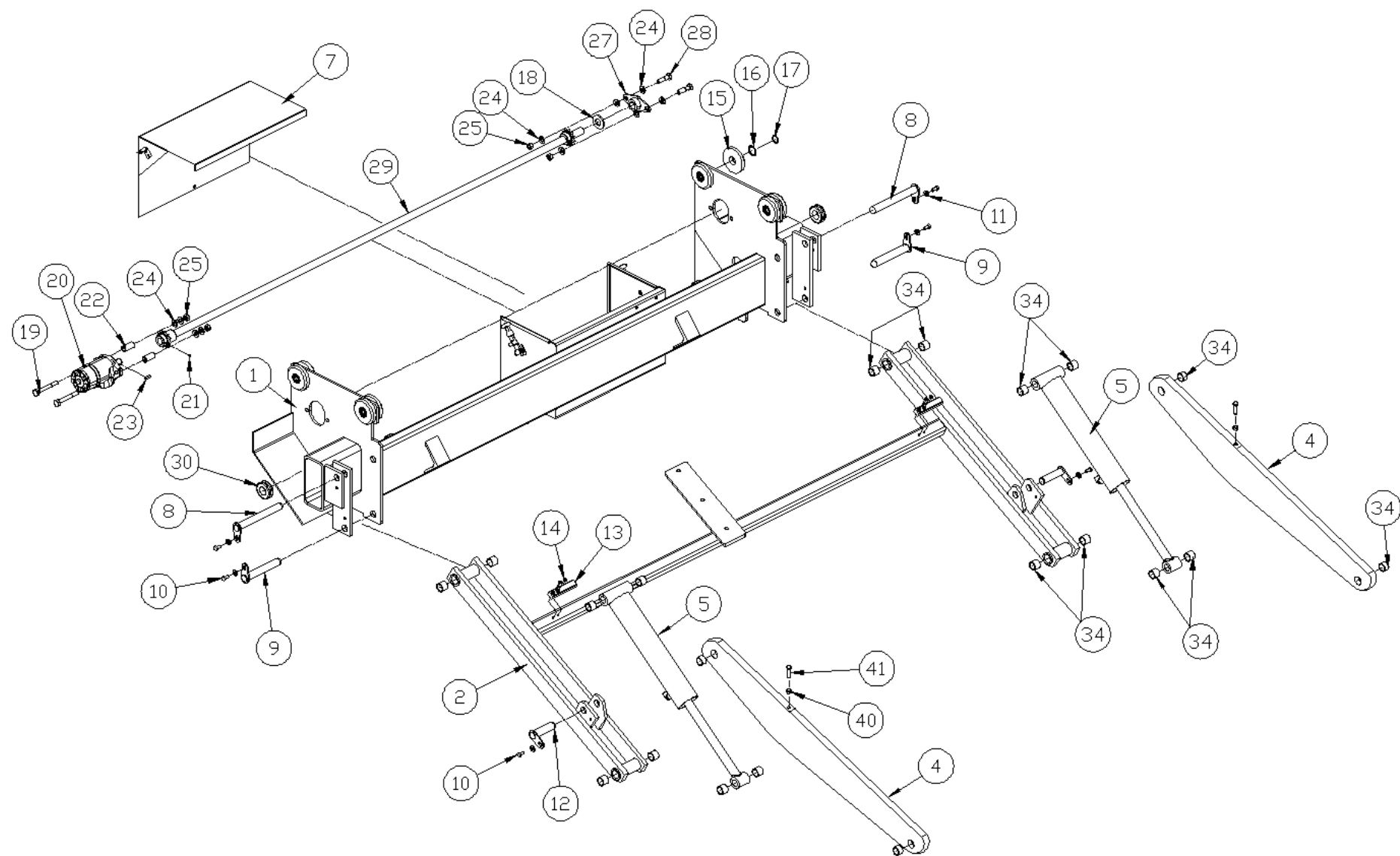


ONE PIECE GALVANIZED PLATFORM



| ITEM | PART NUMBER | QTY | DESCRIPTION | NOTES |
|------|-------------|-----|--|--|
| 1 | 91265239 | 1 | Mount frame Wheel Axle Weld 1.25" Dia. Axles, Galvanized, 2" Wider Enclosure | Was 91265209 prior to 10/1/2013 |
| 2 | 91265300 | 1 | Lift arm, 65.25" Track, W/Warning Lts MTG Galvanized | |
| 4 | 91265500 | 2 | Parallel Arm Complete, Galvanized | |
| 5 | 27580020 | 2 | Lift cylinder for GT-33 | |
| 7 | 91265932 | 1 | Pump Enclosure Cover Assy, Riveted Galvanized Steel Sheet | Was 10291503 prior to 10/1/2013 |
| 8 | 27595100 | 2 | Pin, 1" dia x 8-15/16" lg. | |
| 9 | 27371002 | 2 | Pin, 1" dia x 7" lg. | |
| 10 | 75086055 | 6 | Hex screw, 3/8-16 x 3/4", GR 5. | |
| 11 | 75088081 | 6 | Lock washer, 3/8" | |
| | 75088053 | 6 | Washer, 3/8x1x0.078" THK Flat | |
| 12 | 23370300 | 2 | Pin, 1" dia x 3-15/16" lg. | |
| 13 | 39035700 | 2 | Plastic wear plate | |
| 14 | 75086854 | 4 | Screw, 1/4-20 x 5/8" | |
| 15 | 27866535 | 8 | Wheel, with bearing, 1.25" Dia. Axle | |
| 16 | 91230073 | 8 | Thrust Washer Washer | |
| 17 | 91230013 | 8 | Retaining ring | |
| 18 | 75081223 | 1 | Bronze washer | |
| 19 | 75086234 | 2 | Hex bolt, 1/2-20 x 4-1/2" | |
| 20 | 90802990 | 1 | Hydraulic motor | |
| 21 | 75086740 | 1 | Set screw, 1/4-28 x 1/4" | |
| 22 | 27569100 | 2 | Spacer tube | |
| 23 | 75090179 | 1 | Key, drive axle | |
| 24 | 75088056 | 8 | Washer, 1/2" | |
| 25 | 75085196 | 4 | Lock nut, 1/2-20 | |
| 27 | 91265656 | 1 | Adjustable Drive axle bearing housing w/bearing | Was 91019652 (non-adjustable) prior to 10/2/2013 |
| 28 | 75086190 | 2 | Hex bolt, 1/2-20 x 2" | |
| 29 | 91019650 | 1 | Drive axle, Zinc Plated | |
| 30 | 75050004 | 2 | Grommet | |
| 34 | 85803391 | 20 | Bearing | |
| 40 | 75085111 | 2 | 5/8-18 Lock Nut | |
| 41 | 90908752 | 2 | 5/8-18 x 2" Gr 8 Bolt | |
| 42 | 91265930 | 1 | Pump Enclosure, DPPD | |
| | 91265898 | 1 | Pump Enclosure, SPGD | Was 91265890 prior to 2/3/2014 (2" narrower) |
| 43 | 91265275 | 4 | UHMW SLIDE PAD, GT GALV TRACK, | Not Shown |

MOUNT FRAME

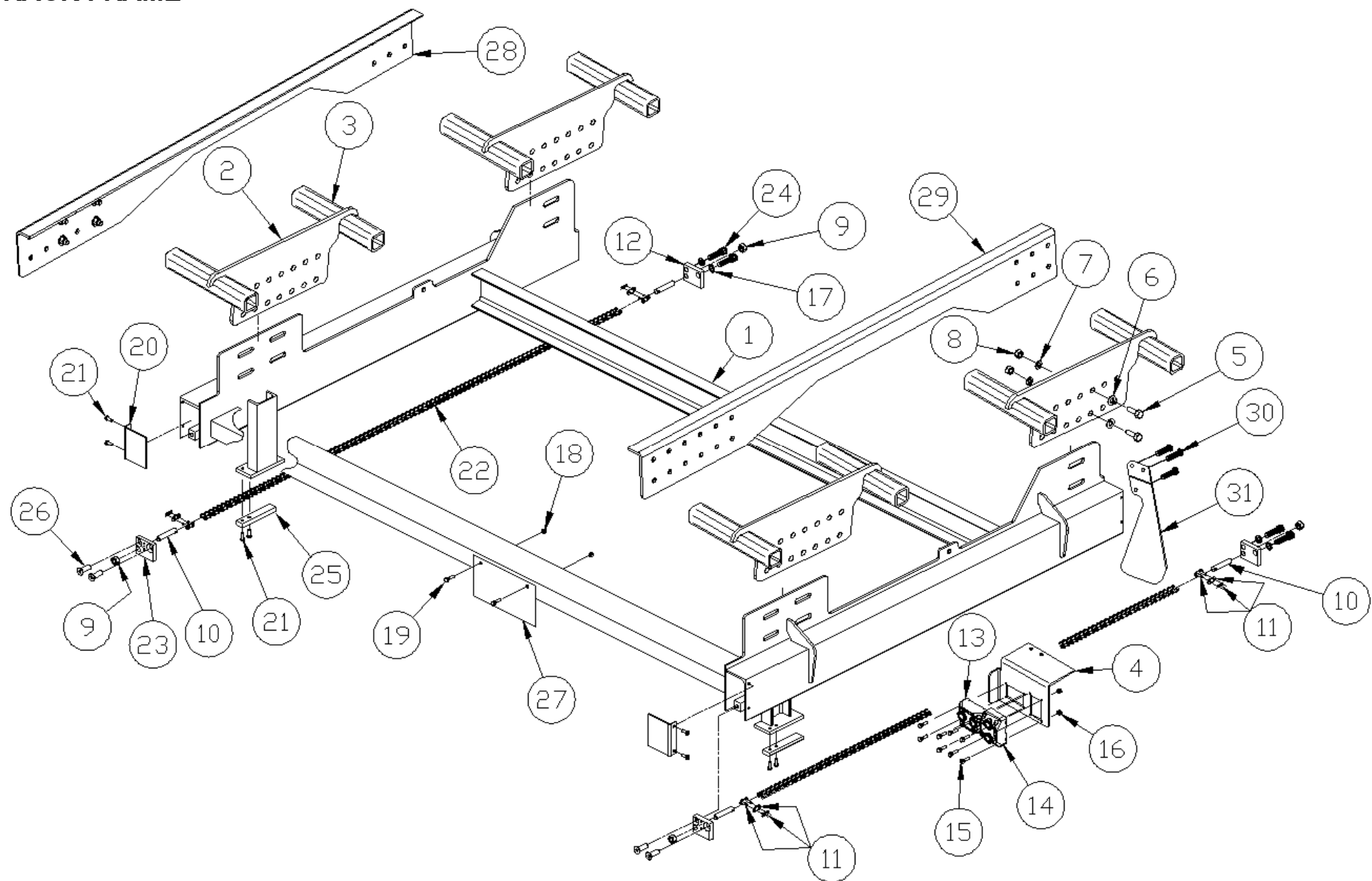


| ITEM | PART NUMBER | QTY | DESCRIPTION |
|------|-------------|-----|---|
| 1 | 90908611 | 1 | Track assembly |
| 2 | 90908295 | 4 | Mounting Plate (side mount only) |
| 3 | 90802823 | 8 | Mounting Plate Support Tube (side mount only) |
| 4 | 90802650 | 1 | Switch Mounting Bracket |
| 5 | 75086201 | 12 | Hex bolt, 9/16-13 x 1.5, GR 8. |
| 6 | 75088065 | 12 | Washer, 9/16" |
| 7 | 75088084 | 12 | Lock washer, 9/16" |
| 8 | 75085115 | 12 | Nut, 9/16"-18 Gr. 8 |
| 9 | 75085162 | 4 | Lock nut, 1/2"-13 |
| 10 | 27569110 | 4 | Chain tensioner |
| 11 | 75081117 | 4 | Connecting link |
| 12 | 27569141 | 2 | Chain Bracket Bar |
| 13 | 90802928 | 1 | Switch, In / Out |
| 14 | 10099323 | 1 | Switch, Raise / Lower, 15' |
| 15 | 75086732 | 8 | #10-32 x 1" Rnd Hd Screw |
| 16 | 75085000 | 8 | #10-32 x 1 Nut |
| 17 | 75088260 | 2 | 1/2" Lock Washer |
| 18 | 75085001 | 2 | Nut, 1/4-20" |
| 19 | 75086212 | 1 | Hex bolt, 1/4-20 x 1.25" |
| 20 | 27569130 | 2 | Rail Cap |
| 21 | 75086861 | 4 | Screw, #10-32 x 5/8" |
| 22 | 27569120 | 2 | Chain |
| 23 | 27569140 | 2 | Chain Bracket Bar |
| 24 | 75087580 | 4 | 1/2-13 x 1-1/4" Lg. S.H.C.S |
| 25 | 39035700 | 2 | Upstop |
| 26 | 75086235 | 2 | 1/2-13 x 1-1/4" Lg. Flat Head S.H.C.S. |
| 27 | 27564070 | 1 | Decal Mount Plate |
| 28 | 90908672 | 1 | D.S. Mount Angle (rear mount only) |
| 29 | 90908673 | 1 | D.S. Mount Angle (rear mount only) |
| 30 | 91129460 | 1 | Flag Weldment, Zinc Plated |
| 31 | 75086874 | 6 | Screw, 1/4-20x58" LG Hex Head Type F |

Item #2 and #3 are not used on Dominos Side mounted liftgates. The Mount frame is attached to Utility Trailer supplied "floating crossmembers"

Several Gen 1 Dominos side liftgates have been field up fitted with Serviceable Rear Rail Cap kits. These removable Cap kits are part number # 91318940. For parts individual component part numbers, contact Waltco Parts Depart at 800-411-5685 for additional information

TRACK FRAME

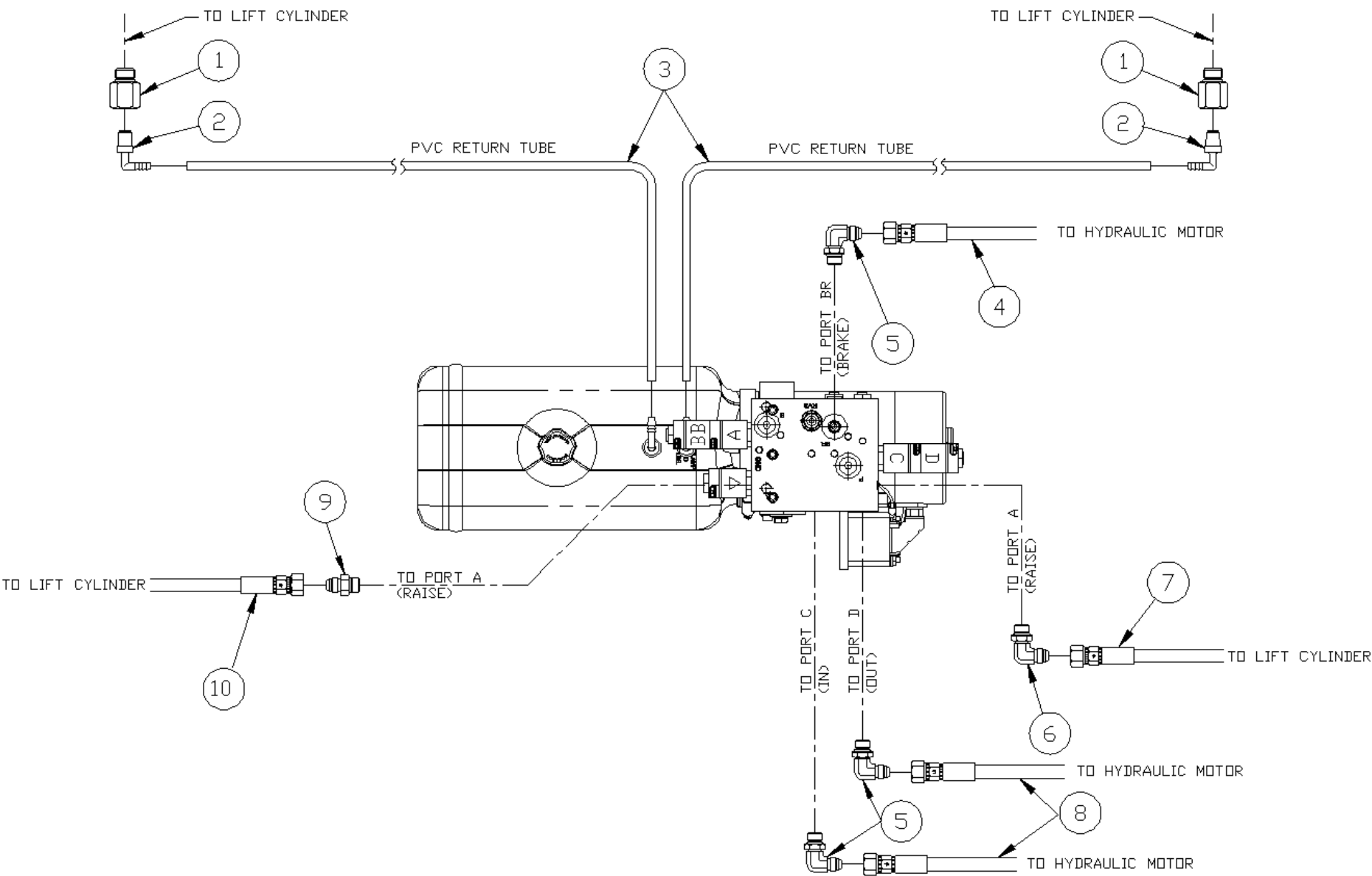


WALTCO LIFT CORP.
DOMINO'S GTSL SERIES

REVISED:
E.O.
REV.

| ITEM | PART NUMBER | QTY | DESCRIPTION |
|------|-------------|--------|---|
| 1 | 7500092-1 | 2 | Adapter, 9/16-18 SAE ORB Male x 1/4 NPTF, P# 6-1/4 F5OG-S |
| 2 | 75082745 | 2 | Barbed Fitting, 1/4NPTFM x 1/4 |
| 3 | 82021059 | 13 ft. | Tube, Flexible PVC, 1/4 ID Sold Per Foot |
| 4 | 90908853 | 1 | Hose, 100R17, 1/4x84, 1/4 JIC FEX x 1/4 JIC FEX |
| 5 | 90908845 | 3 | 90 Elbow, #4 SAE M ORS ADJ. #4 JIC M |
| 6 | 75082869 | 1 | 90 Elbow, 9/16-18 37 Male x 9/16-18 "O" Ring |
| 7 | 90802833 | 1 | Hose, 100R17, 1/4x96, 3/8 JIC FEX x 3/8 JIC FEX |
| 8 | 90802840 | 1 | Hose, 100R17, 1/4 x 85.75 1/4 JIOC FEX x 3/8 JIC FEX |
| 9 | 75082882 | 1 | Adapter, #6 SAE ORB x #6 JIC |
| 10 | 75084041 | 1 | Hose, 100R17, 1/4 x 66.75, 3/8 JIC FEX x 3/8 JIC FEX |

HYDRAULIC LAYOUT



WALTCO LIFT CORP.
DOMINO'S SERIES

REVISED:
E.O.
REV.

| ITEM | PART NUMBER | QTY | DESCRIPTION |
|------|-----------------|-----|--|
| 1 | 90802833 | 2 | Hydraulic hose, 1/4" x 96 |
| 2 | 90802840 | 2 | Hydraulic hose, 1/4" x 85-3/4" |
| 3 | 75083319 | 2 | Hydraulic Fitting |
| 4 | 75082882 | 2 | Hydraulic Fitting |
| 5 | 75082869 | 2 | 90 degree Hydraulic Fitting |
| 6 | 90908954 | 1 | Power Unit, Single Gravity Down, 2900 Psi. W/Shuttle Valve |
| | 7043001-1 | | Motor |
| | 70092403 | | Motor Solenoid |
| | 70091742 | | Reservoir Plastic Horiz. 5.5x6.5x13.5" |
| | 90908951 | 1 | Power Unit, Dual Pump Power down 2900 Psi. w/Shuttle Valve |
| | 7043001-1 | | Motor |
| | 70092403 | | Motor Solenoid |
| | 70091742 | | Reservoir Plastic Horiz. 5.5x6.5x13.5" |
| | 90908952 | 1 | Auxiliary Power Unit for Dual Pump Power Down (not shown) |
| | 70092312 | | Motor |
| | 75089833 | | Motor Solenoid |
| 7 | 7043001-1 | 1 | Motor, 12v, Standard Duty, Internal Thermal Switch |
| 8 | 7500093-1 | 1 | 45 degree Hydraulic Fitting |
| 9 | 75083044 | 5 | Hose Clamp 1/2" |
| | 75083045 | 1 | Hose Clamp 5/8" |
| 10 | 75086036 | 1 | Hex head bolt 5/16-18 x 1" Lg. |
| 11 | 75085003 | 9 | Hex nut, 5/16-18 |
| 12 | 90908853 | 1 | Hydraulic Hose, 1/4" x 84" |
| 13 | 75084041 | 2 | Hydraulic hose 1/4" x 66-3/4" Lg. |
| 14 | 27581035 | 2 | Lock Valve Assy. Complete |
| | 27581015 | 1 | Lock Valve Harness Curb Side (right side) |
| | 27581025 | 1 | Lock Valve Harness Driver Side (left side) |
| 15 | 90522782 | 2 | Hydraulic Fitting |
| 16 | 75083314 | 6 | Hex bolt, 5/16-18 x 1-3/8" |
| 17 | 75083313 | 6 | Cover plate |
| 18 | 75083315 | 8 | Twin Clamp |
| 19 | 75083312 | 3 | Parklamp weld plate |

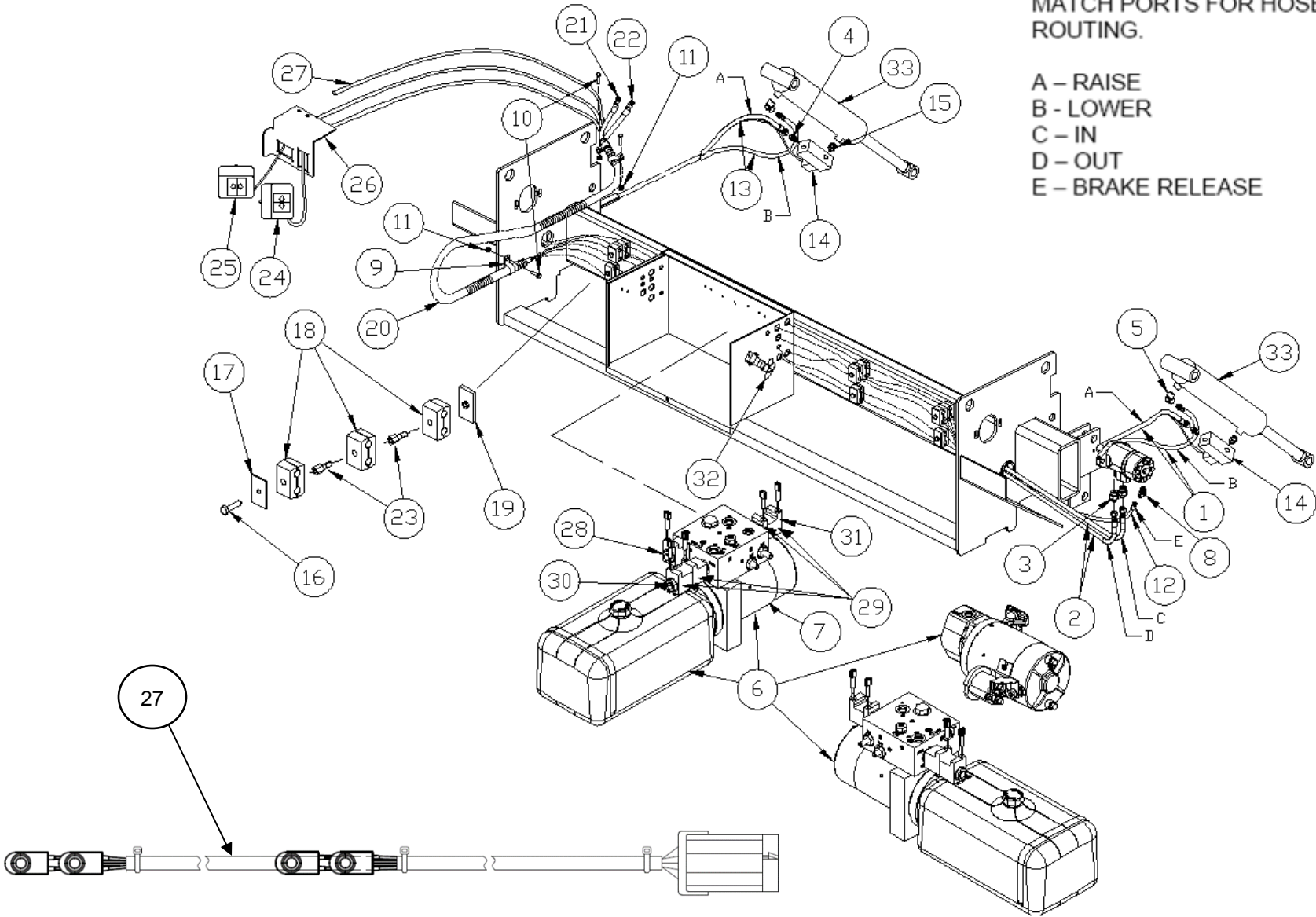
| ITEM | PART NUMBER | QTY | DESCRIPTION |
|------|-------------|------|--|
| 20 | 75082028 | 7 ft | Spiral Loom |
| 21 | 99753005 | 1 | Power Cable 18' 0 GA. Red |
| 22 | 99753006 | 1 | Ground Cable 18' 0 GA. |
| 23 | 75086084 | 2 | Stacking Bolt, 5/16-18 x 25/32" |
| 24 | 91265923 | 1 | Up/Down Switch Assy 22 ft. cable GT |
| | 75089808 | 4 | Toggle only (trailer wall switch box not supplied by Waltco) not shown |
| | 91265922 | 1 | Trailer wall harness, not shown |
| 25 | 91265924 | 1 | In/Out Switch Assy 22 ft cable GT |
| 26 | 90802650 | 1 | Switch Bracket |
| 27 | 90802957 | 1 | Aux Switch Harness |
| 28 | 70401213 | 1 | Cartridge (Valve Only), Normally Closed |
| 29 | 70402303 | 5 | Coil, High Watt, 10v, 25 Watt |
| 30 | 90908981 | 1 | Cartridge, 4 Way, 3 Pos. Closed Center |
| 31 | 90908980 | 1 | Cartridge, 4 Way, 3 Pos. Open Center |
| 32 | 27391301 | 2 | Draw Latch |
| 33 | 27580020 | 2 | Lift Cylinder for GT-33 |
| 34 | 90802841* | 1 | HOSE, 100R17, 3/8 X 9 |
| 35 | 90802842* | 1 | HOSE, 100R17, 1/2" X 15" |
| 36 | 90802832* | 2 | HOSE, 100R17, 1/4 X 100 |
| 37 | 90908831* | 2 | HOSE, 100R17, 1/4 X 73.75 |

*For Dual Pump Power Down (not shown)

HYDRAULIC AND ELECTRICAL COMPONENTS

NOTE
LETTER CALLOUTS USED TO
MATCH PORTS FOR HOSE
ROUTING.

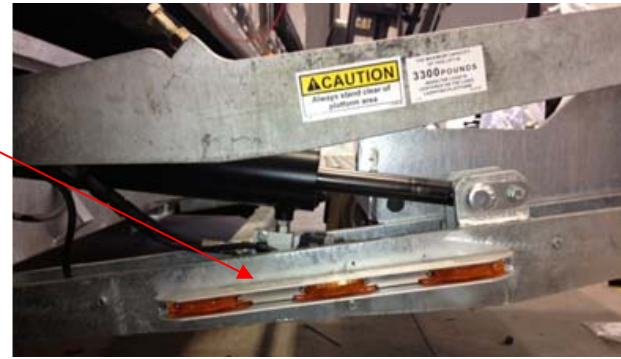
- A – RAISE
- B – LOWER
- C – IN
- D – OUT
- E – BRAKE RELEASE



WALTCO LIFT CORP.
DOMINO'S GTSL SERIES

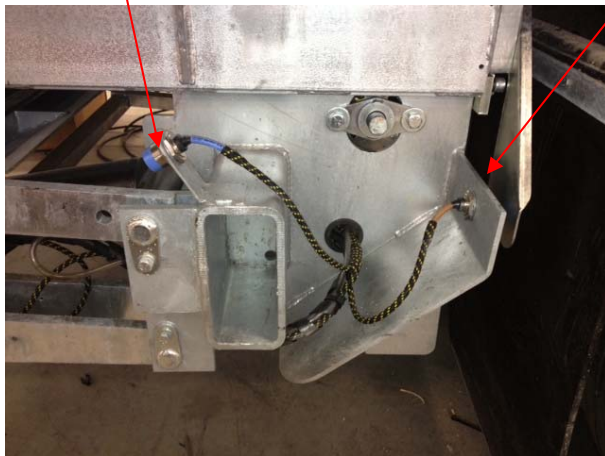
REVISED:
E.O.
REV.

| ITEM | PART NUMBER | QTY | DESCRIPTION |
|------|----------------------|-----|--|
| 1 | 91129884 | 2 | Light, 3X Amber Marker ID Bar |
| 2 | 91230985 | 1 | Harness, DS, Work & Warning Light |
| 3 | 91230986 | 1 | Harness, CS, Work & Warning Light |
| 4 | 91230982 91265995 | 1 | Harness Motor Wiring single pump Harness Motor Wiring dual pump power down |
| 5 | 91230987 | 1 | Proximity Switch Normally Open |
| 6 | 75089785 | 1 | Proximity Switch Normally Closed |
| 7 | 91129936 | 1 | Flasher for LED Lamps |
| 8 | 85803921 | 7 | Relay 12volt 30amp Max |
| 9 | 75089854 | 2/3 | 15amp Fuse |
| 10 | 80001065 | 1 | Solenoid Replacement Kit |
| 11 | 75089832 | 1 | Selector Switch |



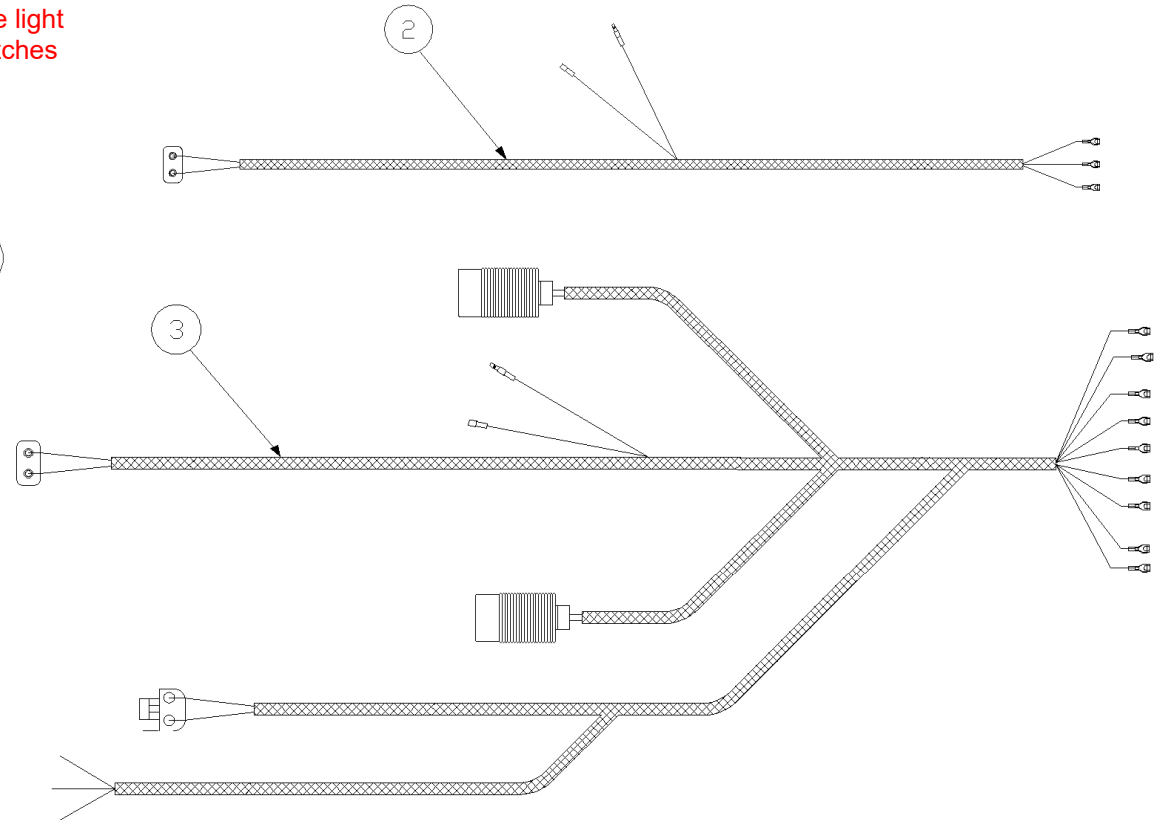
1

Contact Waltco Parts at 800-411-5685 when ordering the Curbside light harness. This harness is available with and without Proximity Switches Included.



5

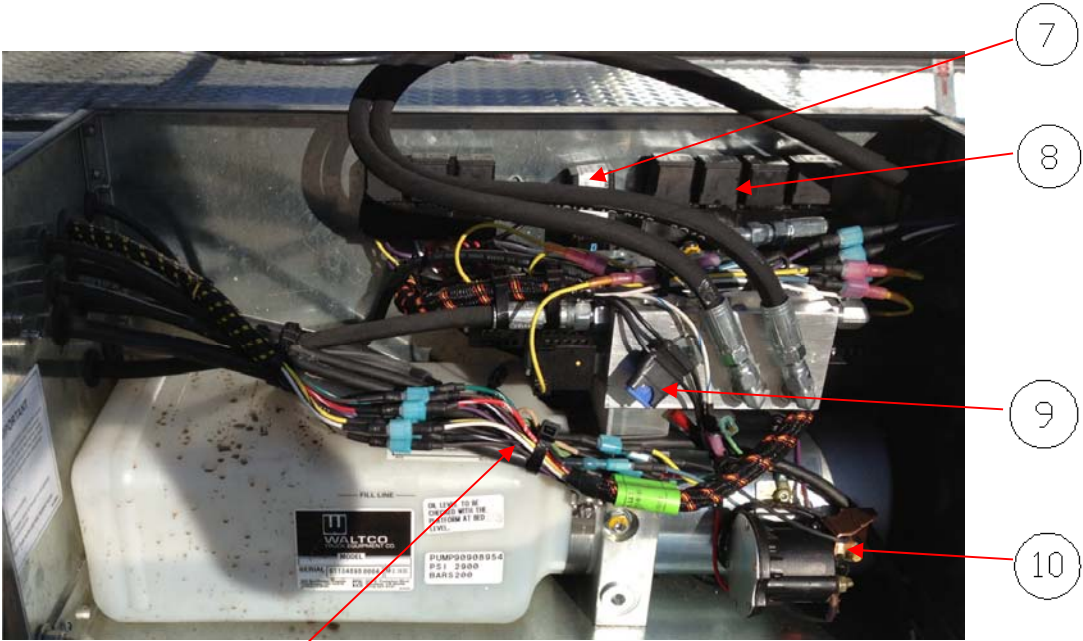
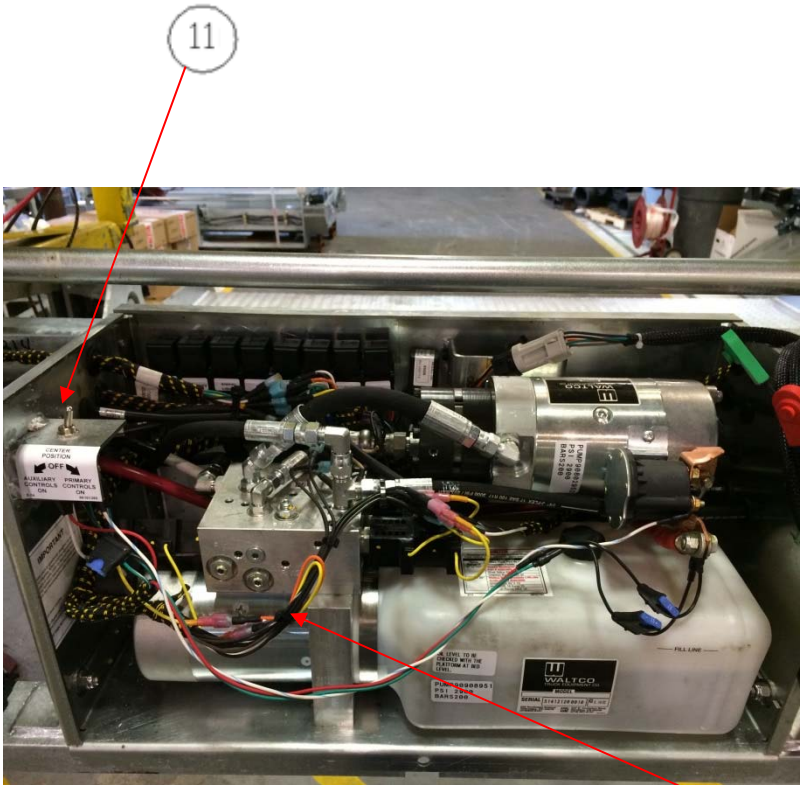
6



WALTCO LIFT CORP.
DOMINO'S GTSL SERIES

REV.

ELECTRICAL COMPONENTS



4

WALTCO LIFT CORP.
DOMINO'S GTSL SERIES

REVISED:
E.O.
REV.

Indicator Light Addendum



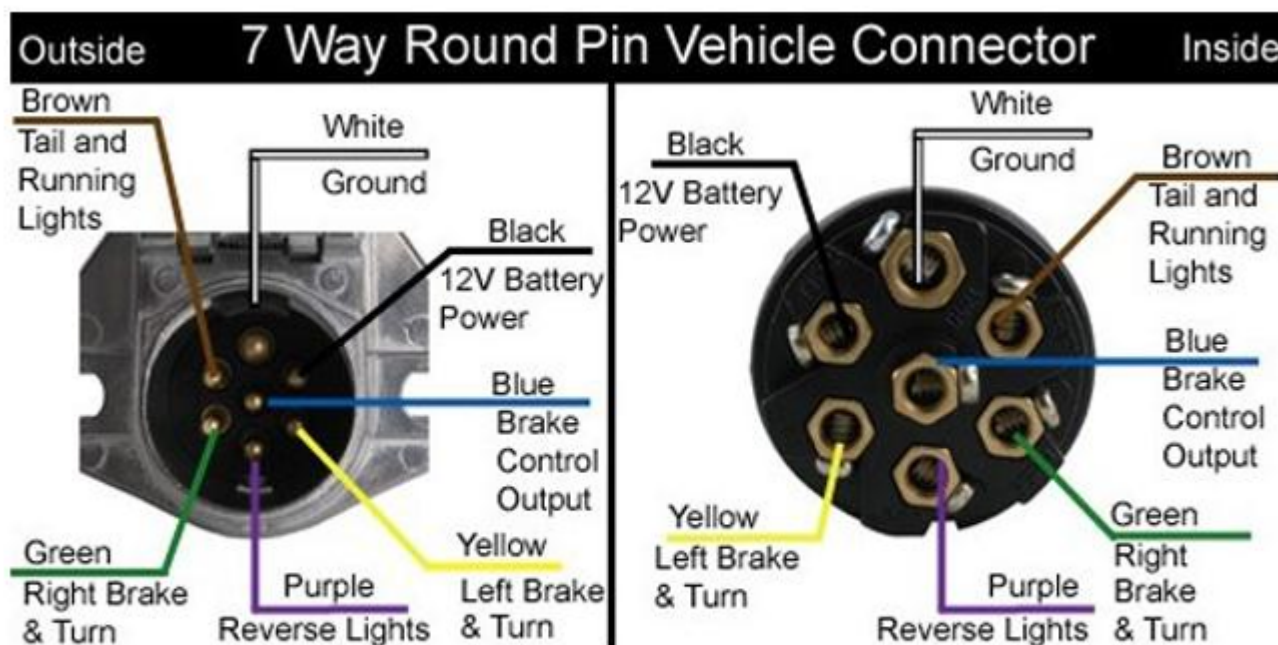
Your liftgate has been equipped with indicator lights that shows the driver (via his rear view mirror) if the gate is stored or deployed. The green indicator light means it is stored. The red indicator light means it is deployed. Green means go and red means whoa.

To wire the lights, chase the cable supplied (already attached and wired into the liftgate), consisting of three wires: one green w/white stripe, one purple w/white stripe and one red w/white stripe and chase it to the front of the trailer.

Mount the light bracket to the front corner of the trailer as shown above and install the supplied LED light

Indicator Light Addendum

Connect the green w/white wire to the positive side of the green LED light. Connect the purple w/white wire to the positive side of the red LED light. Connect the red w/white wire to 12v battery power pin in the 7-way plug via a 5 amp fuse. Connect both negative sides of the LED lights to the ground pin in the 7-way plug.



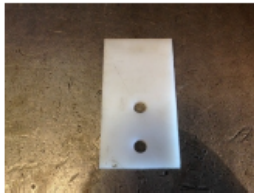
91265801 REV 01 2/13

Common Parts List

Rollers
27866535/9123053



Shims
91265275



Tensioner
27569110



Chain Bracket Bar
27569141



Toggle Seal
75089478



Bearing, for Wheel
10010197



Connecting Link
75081113



Drive Shaft
91019650



Chain for 91.75" Track
(7' 3.5" long) 91265691



Switches, Padded Toggle
91265923 (Up/Down)
/91265924 (In/Out)



Wall Cup, Large
91318920



Switches, Wall
75089808



Hydraulic Motor
90802990



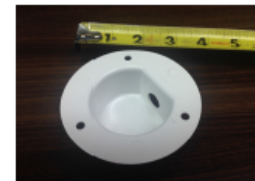
Chain Bracket
27569140



Lock Valve, Cylinder
27581035



Wall Cup, Small (replacement kit)
91160854



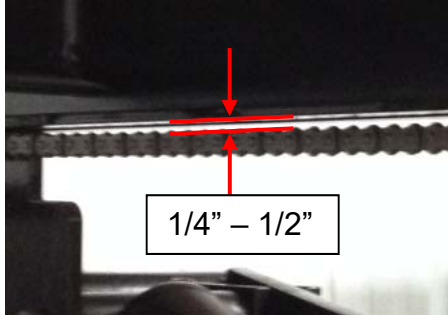
Chain Adjustment Timing

Chain Adjustment Timing

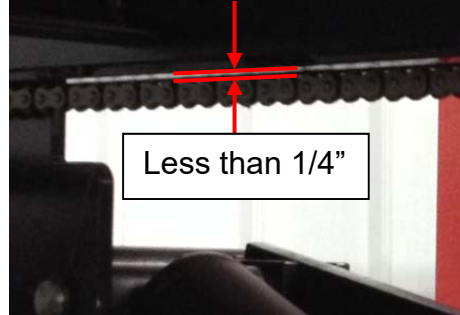
1. Check chain tension

Each chain should hang $\frac{1}{4}$ " to $\frac{1}{2}$ " below steel bar at center point. See below.

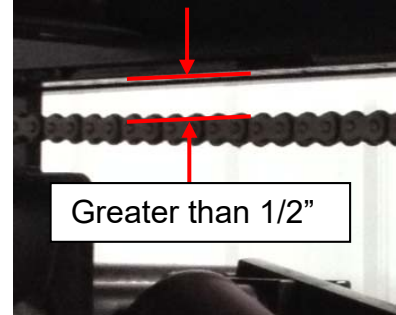
Correct Chain Tension



Tight Chain

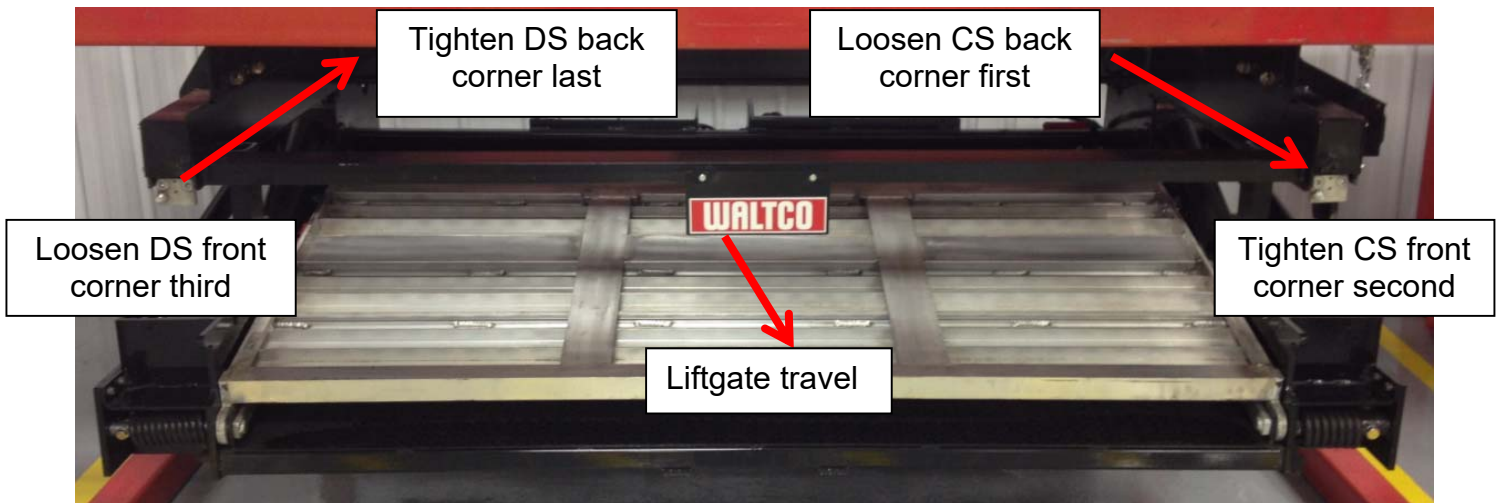


Loose Chain



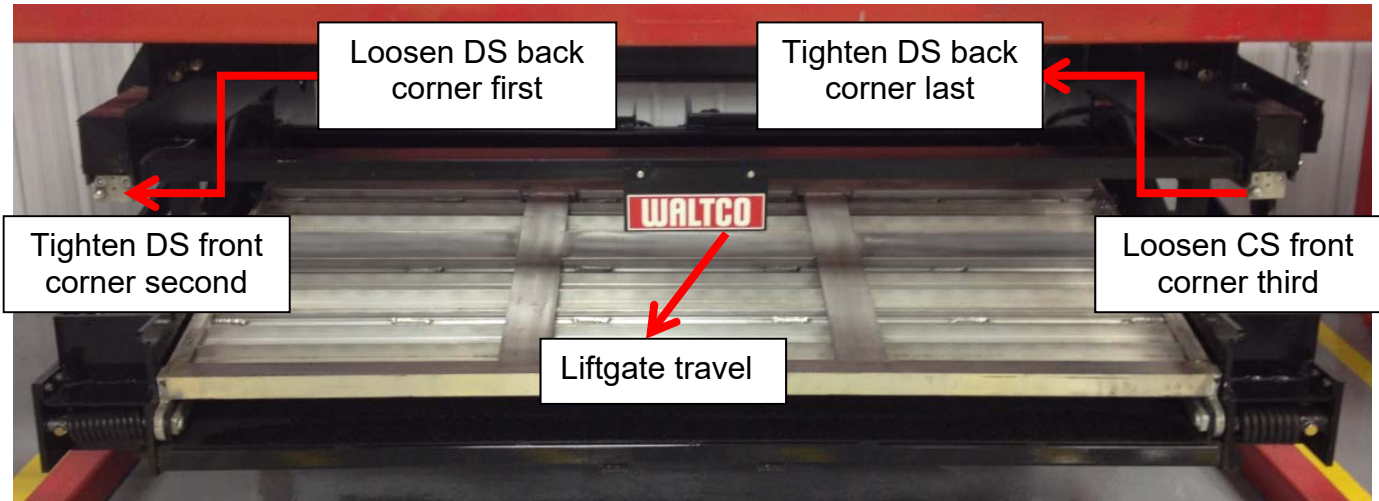
2. Adjust tracking of in and out operation

Face the liftgate. If gate travels to the curbside (right), adjust the curbside chain out slightly. Start by loosening the back of the curbside chain and then tightening the front end. Then adjust the driver side chain in towards the trailer. Start by loosening the front of the driver side chain and then tightening the back end. See photo below.



Chain Adjustment Timing

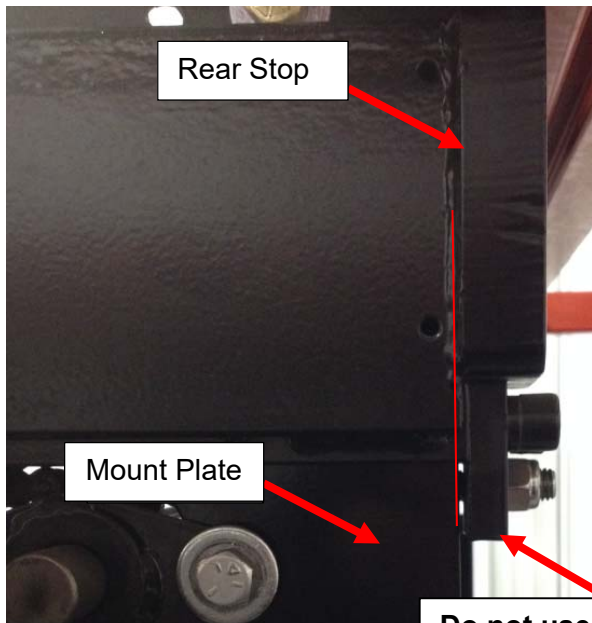
If gate travels to the driverside (left), adjust the driverside chain out slightly. Start by loosening the back of the driverside chain and then tightening the front end. Then adjust the curbside chain in towards the trailer. Start by loosening the front of the curbside chain and then tightening the back end. See photo below.



Check tracking travel. Ensure liftgate does not bind against sides of frame rail. Repeat if needed.

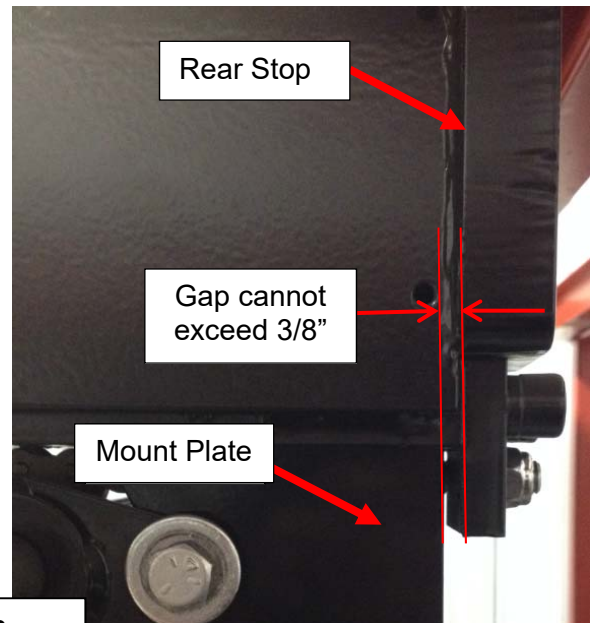
Once liftgate travel is adjusted, check storage position. Run liftgate completely into IN position. View gap between mounting plate and rear stop block. Ensure there is no more than $\frac{3}{8}$ " gap on one side. The other side should be in contact with the rear stop. See below.

Contact between mount plate and rear stop



Do not use this plate as baseline for measurement

Gap between mount plate and rear stop

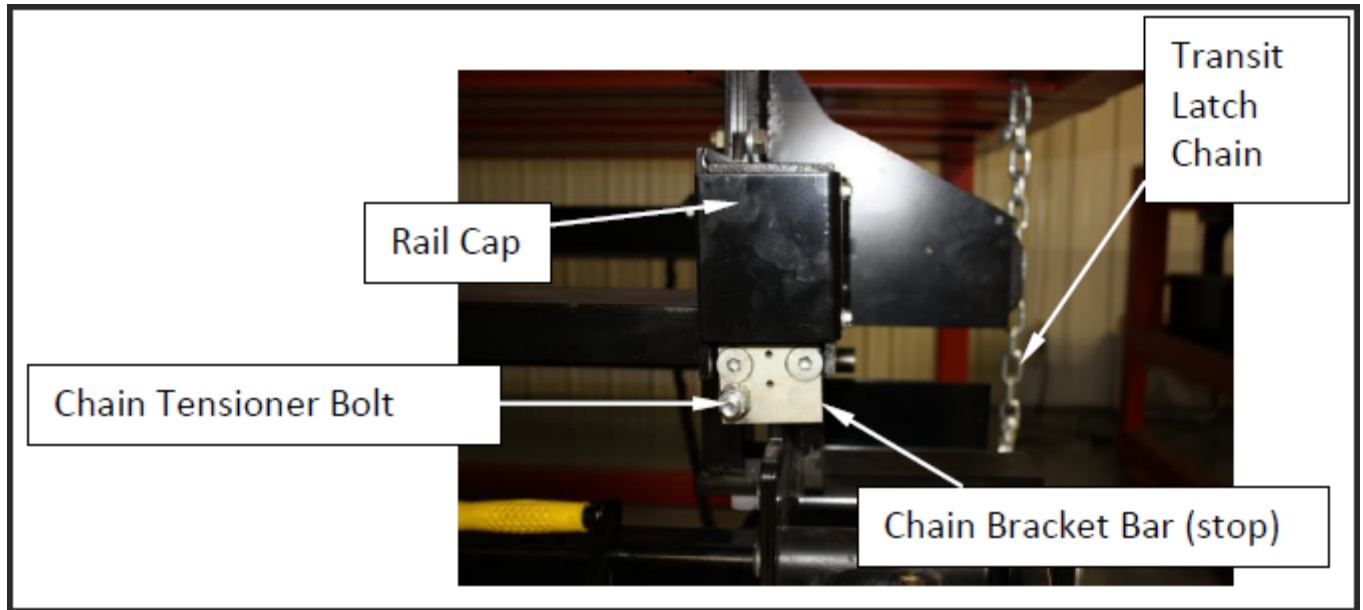


New Chain Installation

New Chain Installation

- a. Drop drive axel by removing 4 bolts.
- b. Install chain centered on both sides. Ensure proper tension on chain. *See Check Chain Tension
- c. Push liftgate back against rear stops.
- d. Install axel back into location. NOTE: Minor adjustment may be needed to chain to get gear teeth and chain to align.
- e. Count chain links on both sides of liftgate from rear stop to gear. Ensure the same number of links.
- f. Test unit. *See Adjust tracking of in and out operation to fine tune liftgate operation.

Roller Wear Check



Roller, Dominos Spec
27866535/9123053



Roller Bearing
10010197



After removing the wheels, inspect the axles for wear. If axles are worn, they can be replaced with the Waltco two-piece axle replacement kit. The **part # for the kit is 80004736**

1. Remove the rail cap to expose the 1st roller in the track – Check must be done to both sides
2. Lower lift gate to set on top of floor jack – raise jack just enough to take weight off the front roller
3. Replace all rollers if excessive side to side or up and down movement is noticed. Movement indicates the bearing is worn out
4. Fork lift or crane is required to slide the lift gate totally out to replace all (8) Rollers if the liftgate is not equipped with Serviceable Rail End Cap kits. These kits are field retrofitable

Bearing Replacement Procedure

1. Remove worn bearing using step tool and 3 lb hammer. Step tool to be 1.20 dia for ¾" in length then 1.30 dia the rest of the shaft.



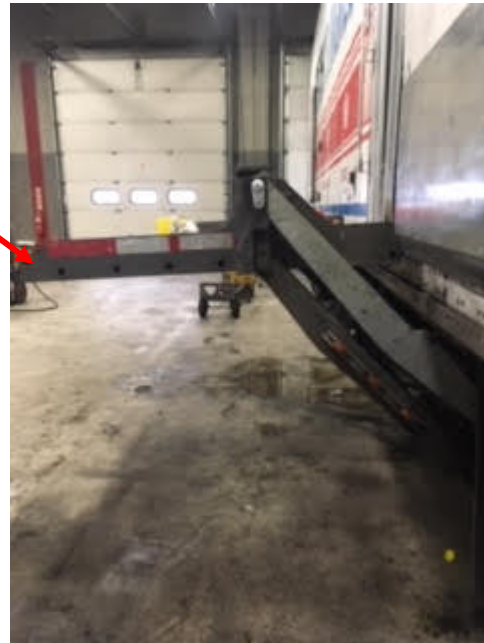
2. Install new bearing using same tool and hammer. Bearing should be flush on both sides with roller. **NOTE: bearing is press in and does not require any adhesive.**

Arm Bearing Pin Check

With platform at bed level, when a noticeable downward slant is seen, this is an indication of bearing wear in one or more of the liftgate parallel and or lift arms

With the platform on the ground check for play in the parallel arms by attempting to twist the arms from side to side

Any movement would indicated the parallel arms bearings need to be replaced



Typical Thickness of Waltco Bearing
Worn bearing below was removed from this liftgate

Worn by 1/32"

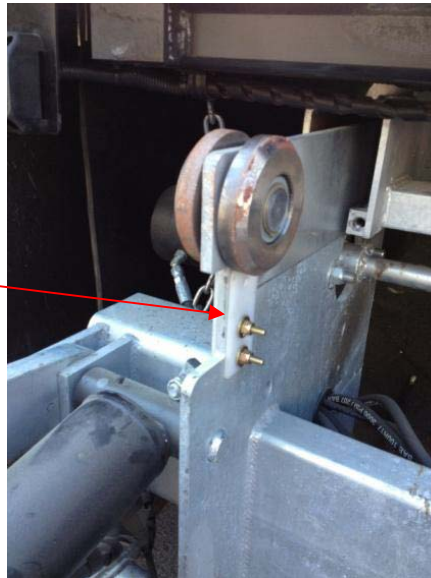
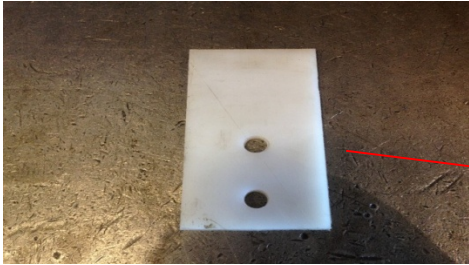
New



Slider Rail Shim Check

1. Shims are on one side only (Front & Back). Four (4) total shims per gate
2. Shims are used to guide the slider straight in the tracks
3. Replace shims if 50% or better worn out

Shims 91265275



Hydraulic Oil Changing Procedure

Hydraulic Oil Recommendations

NOTE: This decal is located on the hydraulic reservoir.

| WALTCO | |
|--|--|
| Purchase in 1 gallon containers from Waltco Parts Hotline 1-800-411-5685 www.waltco.com | |
| Hydraulic Fluid Chart | |
| Temp Range °F | Waltco Fluid Part #s and Acceptable Fluids |
| 0 ⁰ to 120 ⁰ | Waltco Biodegradable LiftLube Part # 85803860 |
| | Shell Tellus S2 V 32 |
| | Chevron Rando HDZ 32 |
| -20 ⁰ to 90 ⁰ | Waltco Biodegradable LiftLube Arctic Part # 85803866 |
| | Waltco All Season Hyd Oil Part # 85803867 |
| | Shell Tellus S2 V 15 |
| | Mobil DTE 10 Excell 15 |
| | Chevron Rando HDZ 15 |
| 8/14 | 80101494 |

Hydraulic Oil Change Procedure

Replace hydraulic oil in spring and fall intervals in colder, winter climates.

1. Properly locate platform
 - a. Gravity down units – lower to ground level
 - b. Power down units – raise to bed level
2. Using a clean syphon, empty oil from hydraulic reservoir
3. Inspect cleanliness of empty reservoir
 - a. If clean, proceed to next step
 - b. If dirt is visible, remove power unit and clean hydraulic reservoir. **NOTE: For power down units, safely support platform prior to disconnecting hoses from power unit.**
4. Add approximately 4.0 liters of new hydraulic fluid to reservoir and fill to “Fill Line” marked on power unit (approx. 1” below the top of the reservoir)
5. Complete 3 cycles of raise and lower and 2 cycles of in and out to bleed any air that may have been introduced
6. Put breather back on reservoir

Switch Replacement

Kits are for different QTYs. NOTE: there are 4 switches per trailer and this switch will be mounted upside down to fit inside existing wall pocket. Do not mount up-right or water will get into the switch.

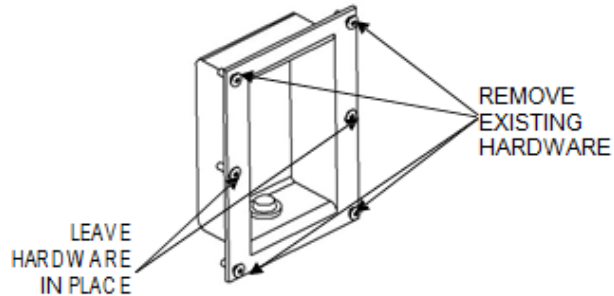
Kit for 1 switch - 91160849

Kit for 2 switches - 91160839

Kit for 4 switches - 91160841

This kit replaces the auxiliary control push button switches on side mount GT liftgates with toggle style switches.

Remove the switch and the four corner fasteners. Do not remove the center-mid hardware.

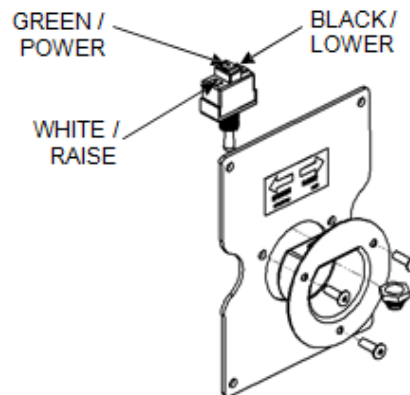


Assemble raise/lower switch plate as shown. Use rivets provided to secure the switch housing cup to the mounting plate.

Attach ring terminals provided to existing harness. Use heat gun to seal terminals. Connect to toggle switch as shown.

Insert toggle switch through large hole in plastic housing and secure with switch seal.

Apply raise / lower decal provided.



Attach assembled adapter plate to the trailer mounted bracket using the rivets supplied as shown.

