

TECHNICAL SPECIFICATIONS

T-CLX 009

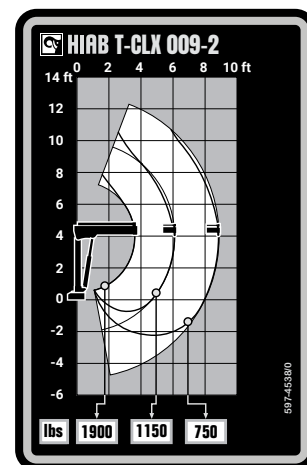
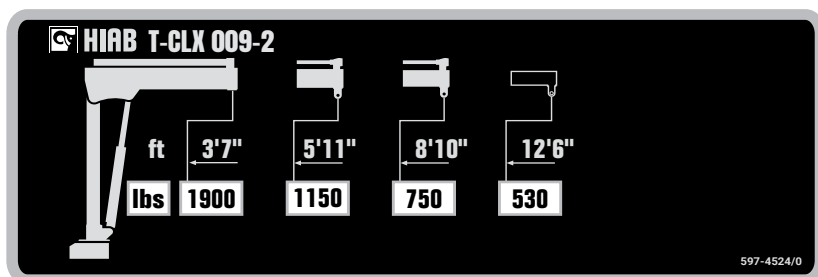


BUILT TO PERFORM



HIAB T-CLX 009 BASIC DATA

TECHNICAL DATA	T-CLX 009-2
Max. lifting capacity (ft-lbs)	8 110
Outreach, hydraulic extensions (ft)	8' 10"
Outreach / lifting capacity (ft-lbs)	3' 7" - 1 900 5' 11" - 1 150 8' 10" - 750
Slewing angle (°)	190 - 322
Height in folded position (in)	53
Width in folded position (in)	29
Installation space needed (in)	20
Weight, "standard" crane without stabilizers (lbs)	330



Hiab's nDurance™ paint is an anti-corrosion paint system using nano technology for the ultimate anti-corrosion coating, maintaining a rust-free reliable crane.

Hiab ProCare™ is a proactive preventative maintenance service contract, designed to maximize uptime of all Hiab equipment by maintaining proper service intervals.

Hiab's Leading Warranty exceeds the industry's standard terms because our products are designed to last longer and provide many years of reliable service.

Disclaimer. Hiab cranes have been built to meet the highest standards of safety and service life and have been thoroughly tested. Strength calculations for this model have been carried out in accordance with EN13001 in fatigue class S2. Cargotec's certified Quality Assurance System complies with ISO 9001. Some of the items in our literature may be extra equipment. Certain applications may require an official permit. We reserve the right to change technical specifications without prior notice.

Hiab is the world's leading provider of on-road load handling equipment. Our high performance product range includes loader cranes, forestry and recycling cranes, demountables, truck mounted forklifts and tail lifts. We aim to set the industry benchmark for customer satisfaction by providing products and services that meet customer needs globally.

www.hiab.us.com
Hiab is part of Cargotec.
www.cargotec.com

Hiab USA Inc
12233 Williams Road
Perrysburg, OH 43551 USA
tel. +419 482 6000
fax. +419 482 6001



V2022.07.01