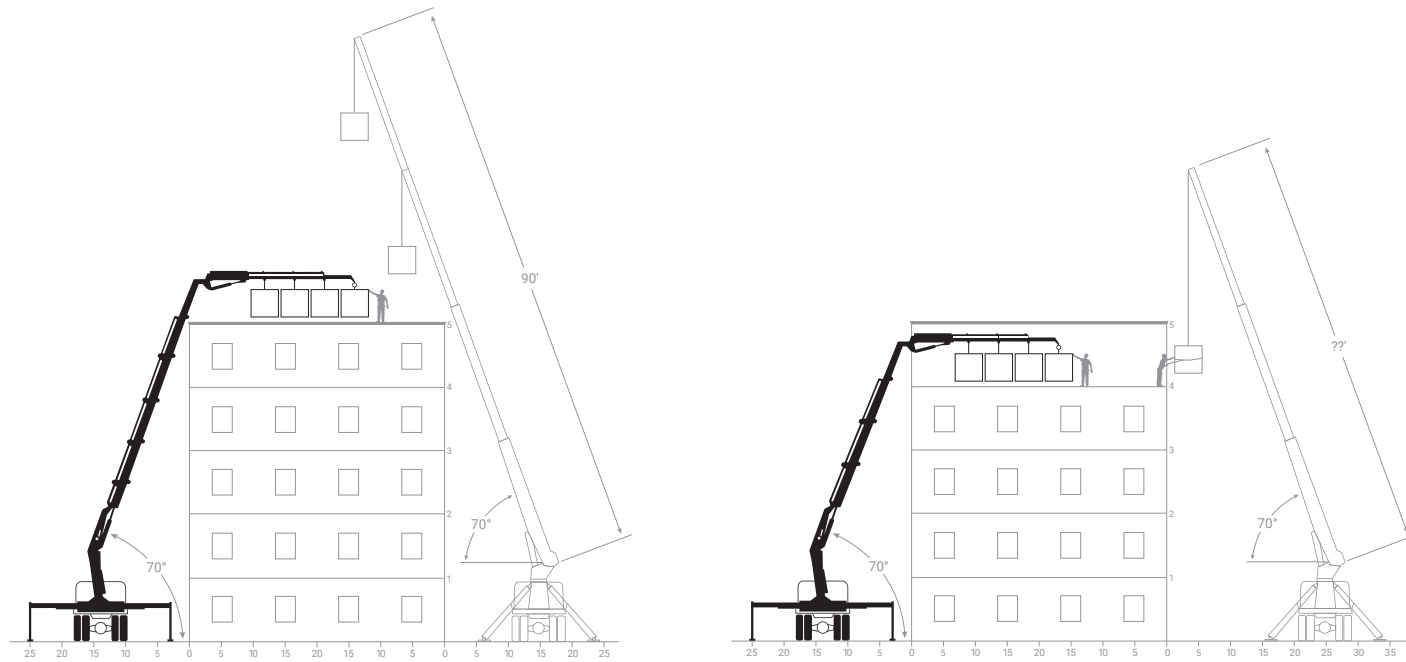


Knuckle Boom vs. Conventional Crane



Dare to be different.
Revolutionize your crane lifting efficiency.

Phillip Johnson | Application Sales Manager | 419.322.8114 | phillip.johnsonjr@hiab.com | hiab.com

Hiab is a leading provider of on-road load handling equipment, intelligent services, smart and connected solutions. Hiab's class-lead load handling equipment includes HIAB, EFFER and ARGOS cranes, MOFFETT and PRINCETON truck mounted forklifts, LOGLIFT and JONSERED forestry and recycling cranes, MULTILIFT skiploaders and hooklifts, GALFAB roll-off cable hoists, and lift gates under the ZEPRO, DEL and WALTGO brands. As the industry pioneer, Hiab is committed to be the preferred partner and solution provider to its customers and shape the future of intelligent load handling. Hiab is part of Cargotec Corporation. www.hiab.us.com

iQ.1188 HIPRO



Applications

- **SPECIALIST PROJECTS**
 - Low overhead lifting
 - Into buildings
 - Underground
 - Target lifts under bridges from above
- **INDUSTRIAL APPLICATIONS**
 - Overhead crane repairs and installs
 - Installation of pumps and motors
 - Structural steel
 - Ductwork installation in tight areas
- **MACHINERY INSTALL AND REMOVAL**
 - MRI machines
 - Machine shop equipment
 - Paper machines
 - Generator installs
- **HVAC INSTALLATION AND REMOVAL**
- **ASSIST CRANE**
- **TREE CARE**

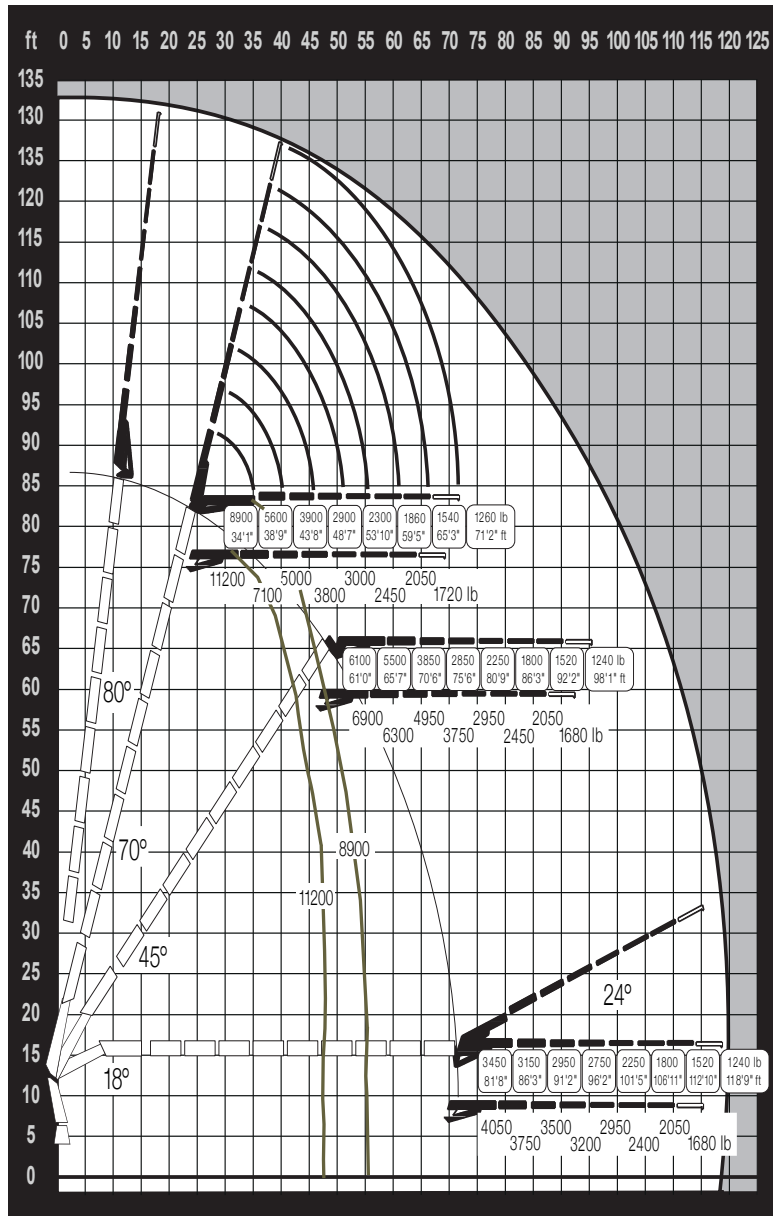
iQ.1188 HIPRO



HIAB

Specifications

- **DETACHABLE 7,000 LBS COUNTERWEIGHT**
- **DETACHABLE JIB CRADLE**
- **BED CAPACITY = 4,000 LBS (DRY WEIGHT) = WITHOUT JIB/JIB CRADLE AND COUNTERWEIGHT**
- **GROSS VEHICLE WEIGHT: 68,700 LBS**
- **100-GALLON FUEL TANK**
- **TWIN STEER FRONT AXLES**
- **DYNAMIC BOOM OPERATION: PERFORM LIFTS USING THE TELESCOPING BOOM (Note: our booms do not pin off)**
- **REMOVABLE HYDRAULIC WINCH AND CABLE SYSTEM**
- **MAIN BOOM = 9 EXT / LUFFING JIB = 6 EXT**



Features

TIPPING STABILITY



Variable Stability Limit system (VSL) monitors the truck's stability by registering the extension of stabilizers and monitoring the pressures at each leg to determine the maximum safe capacity of the crane, allowing for higher capacities in situations where the legs are not able to be fully extended. **VSL Plus** compensates for the weight of the load on the truck, offering even greater lifting capacities.

EASE OF OPERATION



Load Stability System (LSS-V) provides smoother, more precise vertical boom motions. If an operator performs a hard stop while raising or lowering a load, the LSS system controls boom movement, minimizing the bouncing of the boom and load, while preventing load damage and unnecessary stress on the crane's components.



Semi Automatic Folding (SAF) reduces the risk of costly damage by making it fast and easy for any operator to park the crane in a safe and controlled way. Both folding and unfolding can be performed with a single lever without having to control each function separately.



Automatic Speed Control (ASC) gives a step less increase in lifting capacity of up to 10%, all in one smooth, continuous motion. This feature, unique to Hiab, engages automatically, which means that the operator does not feel or notice a thing. The function activates as you reach the regular capacity limit, meaning that you can still lift the load where other cranes would have come to a complete stop.

REMOTE CONTROL OPERATION



CombiDrive4 remote control intuitive interface gives you full control over all crane movements, haptic feedback helps you keep your eyes on the load, and data and alerts are easy to read with the color tri-display. It also features an extended battery life, plus it is ultra-light. The CombiDrive4 is ergonomically designed for all-day operations, featuring an 8-function that's the same size as the 6-function unit.

CRANE SAFETY



The HiPro control system with **Overload Protection (OLP)** is standard on all HIAB heavy-range cranes and brings an unprecedented level of safety to operations without reducing performance. When approaching an overload condition, the crane gives an audible and visual signal at 90% and will stop all radius increasing functions once full capacity has been reached. Moreover, our patented **"PFD" pump flow distribution** in HiPro, is designed for simplicity and intuitive use. It also ensures that available oil flow is distributed evenly, making the crane operation very predictable, smooth, and precise.



HiConnect is Hiab's 'Remote Connectivity' system, enabling remote wireless (data gathering) access to the cranes control system for the purposes of service reporting, use reporting, fault finding and problem solving. The HiConnect feature programming is built into Space X4 and therefore (with the correct Hardware installed) is potentially available on all Space X4 cranes. In the future all cranes will have HiConnect enabled.

