

# HOW TO CHOOSE THE OPTIMAL SOLUTION FOR CONTAINER HANDLING

A comprehensive buyer's guide



**GALFAB**



**MULTILIFT**

# MULTILIFT HOOKLIFTS: SMARTER SOLUTIONS FOR EVERY LOAD



MULTILIFT hooklifts redefine efficiency and adaptability in load handling. Designed for quick loading and unloading, these systems can be operated directly from the cab, enhancing safety and productivity. MULTILIFT hooklifts deliver unmatched versatility, handling a variety of container sizes and applications with ease.

Advanced features like remote operation and slope detection ensure that operations are precise, safe, and fast, even in demanding environments.

MULTILIFT offers a wide range of hooklifts in the Ultima and XR ranges. Whether you're tackling waste management, landscaping, or heavy-duty construction, there's a MULTILIFT solution to keep your business competitive.

# MULTILIFT ULTIMA HOOKLIFT HIGHLIGHTS



The MULTILIFT Ultima hooklift combines powerful strength with advanced control, delivering unmatched efficiency, safety, and durability. Its low-built design maximizes payload, while the powerful hydraulics system ensures smooth operation, even under the heaviest loads. Incredibly durable and built to last, the Ultima's innovative features give operators the confidence and precision to handle any job, no matter how challenging the environment.

## Auto Sequence

Simplify container exchanges with Auto Sequence. This feature allows operators to use a single joystick movement to load or unload containers in one seamless action, speeding up the process and boosting productivity.

## Wireless remote

Safety is in your hands with the MULTILIFT wireless remote. Operators can manage loading and unloading from a distance, improving safety and operational efficiency on every job.



## Performance Package

Elevate your Ultima hooklift with the Performance Package. Reduce cycle times to one third of normal, without increasing engine speed. Combined with enhanced safety options and precision controls, it boosts efficiency, improves operator safety, and ensures load accuracy even in the toughest conditions.

## CASTED PARTS FOR HIGH STRENGTH

Built to endure, the Ultima hooklift uses high-strength steel for a reinforced frame and wear-resistant components. Designed for heavy loads and rough terrain, this robust construction reduces downtime and maintenance costs.

## SAFESPEED

The SafeSpeed option adjusts loading speed based on load weight, ensuring maximum efficiency without compromising safety. Its intelligent damping system protects the hooklift and truck, offering smooth movements and minimizing risks.

## FRICION RELIEF

The Friction Relief feature raises the container slightly during loading and unloading, eliminating contact with the container supports. This reduces noise, minimizes wear on both the hooklift and containers, and ensures smoother operations.

## FLOAT FEATURE

The Float Feature lets lift cylinders adjust naturally as the truck moves over uneven terrain. This maintains the vehicle's flexibility, provides a more comfortable ride, and prevents stress on the chassis and hooklift, extending their service life.



# GALFAB CABLE HOISTS: HEAVY LIFTING MADE SMARTER



GALFAB cable hoists are built to tackle the toughest challenges in waste management, recycling, and construction. Using a hydraulic-powered cable and pulley system, they handle loads up to 75,000 pounds with ease, even in confined spaces with low overhead clearance. Designed for precision and reliability,

GALFAB hoists keep your operations running smoothly, while remote control functionality enhances operator safety and reduces strain.

From the versatile Outside Rail Hoist (OR Series) to the robust Extendible Tail Hoist (EX Series) and the heavy-duty Above Frame Outside Rail Hoist (AFOR Series), GALFAB offers tailored solutions for every need. With lift capacities from 20,000 to 75,000 pounds and configurations for nearly any container application, these hoists are designed to meet and exceed industry standards.

# GALFAB CABLE HOIST HIGHLIGHTS



GALFAB cable hoists are built for businesses that demand reliability, safety, and efficiency in waste and recycling operations. Engineered for user-friendly operation and superior performance, these hoists offer operators improved visibility, maneuverability, and advanced features to handle materials quickly and effectively.

## Electronic control

Seamless operation is at your fingertips with GALFAB's new electronic control system, featuring a single CANbus cable for easy installation and troubleshooting. All main hoist movements can be managed with a joystick, enabling intuitive, one-handed control for maximum efficiency.

## Slope detection

Safety takes priority with slope detection technology, which warns operators of excessive lateral tilt and halts operations if the angle becomes too steep. This feature prevents dangerous situations, protecting equipment, surroundings, and personnel.

## Patented container securement

GALFAB's patented securement system, "The Hooker," revolutionizes container safety and efficiency. Powered by the truck's air system, this simple yet effective system streamlines operations, giving your business a competitive edge.



## DUAL SUPPORTED CONTAINER ROLLERS

Strength and durability meet precision with dual-supported container rollers. By aligning rollers with containers and supporting both sides, this feature ensures even wear, extends roller shaft life, and provides a more reliable loading and unloading process.



## AUTO FOLD FORWARD ICC BUMPER

The bumper automatically folds forward reducing the risk of bending or getting stuck in the landfill, helping prevent damage, unplanned downtime, and maintenance costs.

## CASTED PARTS FOR EXTENDED LIFE

Durability is at the core of GALFAB cable hoists. Built with high-strength steel and wear-resistant components, these hoists withstand the toughest challenges, ensuring extended service life and reduced maintenance costs.

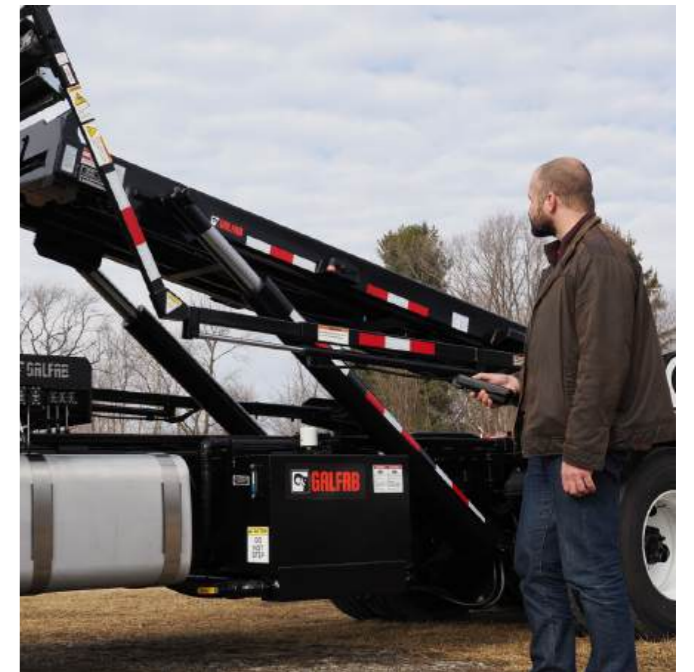


## Wireless control

Stay safe and in control with GALFAB's wireless control system. Operators can manage all hoist functions from anywhere around the truck, maintaining a safe distance while ensuring full visibility of the operation. Programmable buttons provide added flexibility to meet specific needs.

## Smart electronics

GALFAB's new electronic control system brings MULTILIFT-proven technology to roll-off hoists for the first time. With CANbus integration, a rugged Black-box brain, tilt sensor, and wireless control with ten programmable buttons, you get faster response, safer operation, and total control, all in one powerful package.



# TECHNICAL DATA MULTILIFT HOOKLIFTS

Family	Hooklift Model	Lift Capacity (lbs)	System Length	Hook Height (in)	Adjustable Hook Height Available	CA' (in)	CT' (in)	Hoist Length (in)	Hook to Rear Roller (in)	Container Range <sup>2</sup> (ft) Min-Max	Dump Angle (°)	System Weight (lbs)	
XR	XR5S.3050	12,000	3050	36	No	84 - 96	127.8	120.3	9.5	12	49	1,345	
	XR5S.3250		3250			102 - 110		9.5	13	49	1,433		
	XR5S.3650		3650			116 - 124		10.5	14	49	1,521		
	XR5S.4150	4150	130 - 138			12		16	49	1,610			
	XR7S.3250	3250	102 - 110			10		13	50	2,051			
	XR7S.3650	3650	108 - 124			11		14	50	2,117			
	XR7S.4150	4150	130 - 142	12	16	50		2,183					
	XR8S.3250	3250	102 - 110	10	13	50		2,161					
	XR8S.3650	3650	108 - 124	11	14	50		2,227					
	XR8S.4150	4150	130 - 142	12	16	50		2,293					
	XR10S.3250	3250	102 - 114	10	13	50		2,161					
	XR10S.3650	3650	113 - 125	11	14	50		2,293					
	XR10S.4150	4150	136 - 148	12	15	50		2,359					
	XR10S.4600	4600	149 - 161	13	17	50		2,448					
XR10S.5100	5100	176 - 188	14	19	50	2,536							
Ultima	U14S.4100	30,000	4100	54/62	Yes	139 - 146	117 - 129	178	160.8	11	15	50	3,520
	U14S.4300		4300			142 - 149	120 - 132	180.9	168.2	12	16	47	3,586
	U14S.4600		4600			156 - 163	134 - 146	195	180.5	13	17	50	3,652
	U14S.5100		5100			174 - 181	152 - 164	212.8	200.2	14	19.5	49	3,872
	U14S.5300		5300			187 - 194	165 - 177	225.8	211.2	15	19.5	52	4,048
	U14S.5600		5600			194 - 201	172 - 184	233.6	216.1	15	20	52	4,100
	U16S.4600	4600	140 - 152			195.8	180.5	13	17.5	50	3,828		
	U16S.5100	5100	159 - 171			215.5	200.2	14	19	49	4,048		
	U16S.5300	5300	170 - 182			226.6	211.2	15	20	52	4,224		
	U16S.5600	5600	178 - 190			234.4	219.1	15	20.5	52	4,268		
	U16S.5900	5900	190 - 202			246.3	230.9	15.5	21.5	52	4,378		
	U16S.6100	6100	198 - 210			254.2	239.6	16	22.5	49	4,422		
	U21S.4600	4600	136 - 146			197.6	181.2	13	17.5	50	5,049		
	U21S.5100	5100	156 - 166			215.6	200.2	14	19	49	5,248		
	U21S.5300	5300	166 - 176			226.7	211.2	15	20	53	5,446		
	U21S.5600	5600	176 - 186			234.5	219.1	15	20	53	5,513		
	U21S.5900	5900	184 - 196			246.5	230.9	15.5	22	53	5,579		
	U21S.6100	6100	193 - 205			255.2	239.6	16	22	49	5,623		
	U21S.6300	6300	202 - 214			264.2	248.6	17	23.5	46	5,711		
	U26S.5100	5100	156 - 166			215.7	200.2	14	19	49	5,610		
	U26S.5300	5300	165 - 177			226.9	211.2	15	20	52	5,830		
	U26S.5600	5600	172 - 184			234.6	219.1	15	21	52	5,896		
	U26S.5900	5900	184 - 196			246.6	230.9	15.5	22	52	6,006		
	U26S.6100	6100	193 - 205			255.2	239.6	16	22.5	49	6,050		
	U26S.6300	6300	202 - 214			264.2	248.6	17	23	46	6,138		
	U26S.7000	7000	228 - 240			290.7	275	19	25.5	50	6,790		
	U26S.7800	7800	260 - 272			322.1	306.5	21.5	28	46	7,120		
	U30S.5300	5300	165 - 177			226.9	211.2	15	20	53	6,094		
	U30S.5600	5600	172 - 184			234.6	219.1	15	21	53	6,138		
	U30S.5900	5900	184 - 196			246.6	230.9	15.5	22	55	6,270		
	U30S.6100	6100	193 - 205			255.2	239.6	16	22.5	52	6,314		
	U30S.6300	6300	202 - 214			264.2	248.6	17	23	49	6,402		

<sup>1</sup>This measurement does not include space for anything between the hoist and the cab, add appropriate length as needed for tarp or hydraulic tank

<sup>2</sup>Based on bumper at end of frame rails to meet FMCSA rear end protection requirements, contact your local MULTILIFT representative for more details

# TECHNICAL DATA GALFAB CABLE HOISTS

Family	Lift Capacity (lbs)	System Length	CA' (in)	CT' (in)	AF (in)	Hoist Length <sup>2</sup> (in)	Container Range <sup>3</sup> (ft) Min-Max	Dump Angle (°)	System Weight <sup>4</sup> (lbs)	Mainframe Height (in)	Subframe Height (in)	Cylinder Type	Mount Type	
Outside Rail (OR)	20,000	124	124	36	36	219	13	17	51	3,791	8	4	Single Stage	Reverse
		138	138			233	14	18	48	3,754				
		168	168			263	16	20	51	4,552				
		187	187			282	18	22	48	4,762				
		194	194			299	20	24	46	5,330				
		124	124			219	13	17	51	3,791				
	30,000	138	138			233	14	18	48	3,851				
		168	168			263	16	20	51	4,574				
		187	187			282	18	22	48	4,784				
		194	194			299	20	24	46	5,330				
		40,000	174			174	279	18	22	6,377				
			194			194	299	20	24	6,651				
60,000	174		174	279	18	22	6,377							
	194		194	299	20	24	6,651							
75,000	174	174	279	18	22	6,800								
	194	194	299	20	24	7,103								
	Heavy Duty Subframeless Outside Rail (NOR)	174	174	279	18	22	6,790							
		194	194	299	20	24	7,061							
Extended Tail (EX)	223	223	330	22	26	6,865								
	174	174	279	18	22	6,728								
Short Extendible Tail (OX)	194	194	240	20	24	7,029								
	174	174	240	18	22	6,956								
Inside Outside Rail (IO)	194	194	258	20	24	7,257								
	174	174	279	18	22	7,550								
Heavy Duty Subframeless Extended Tail (NEX)	194	194	299	20	24	7,850								
	174	174	279	18	22	7,550								
Heavy Duty Subframeless Short Extended Tail (NOX)	194	194	299	20	24	8,075								
	223	223	299	20	24	7,550								
Heavy Duty Subframeless Inside Outside Rail (NIO)	174	174	279	18	22	7,550								
	194	194	299	20	24	7,850								
Above Frame Outside Rail (AFOR)	174	174	299	20	24	8,075								
	194	194	279	18	22	7,550								
Above Frame Extended Tail (AFEX)	174	174	238	18	22	7,550								
	194	194	268	20	24	7,639								
Deadlift (HH)	223	223	297	20	26	5,823								
	174	174	274	18	22	6,945								
Extended Tail Deadlift (EH)	194	194	294	20	24	6,895								
	174	174	314	22	26	7,251								
Heavy Duty Subframeless Single Stage	174	174	279	18	22	5,447								
	194	194	299	20	24	5,646								
Heavy Duty Subframeless Single Stage	223	223	330	22	26	6,046								
	174	174	278	18	22	7,651								
Heavy Duty Subframeless Single Stage	194	194	298	18	22	7,974								
	174	174	278	18	22	8,374								
Heavy Duty Subframeless Single Stage	194	194	298	18	22	7,974								
	174	174	260	18	22	8,301								
Heavy Duty Subframeless Single Stage	194	194	280	20	24	8,624								
	174	174	260	18	22	8,301								
Heavy Duty Subframeless Single Stage	194	194	280	20	24	8,624								
	174	174	224	18	22	6,085								
Heavy Duty Subframeless Single Stage	194	194	248	20	24	6,248								
	174	174	238	18	22	5,870								
Heavy Duty Subframeless Single Stage	194	194	253	20	24	6,248								

<sup>1</sup>This measurement does not include space for anything between the hoist and the cab, add appropriate length as needed for tarp or hydraulic tank

<sup>2</sup>Based on chassis frame height of 45", taller chassis will require longer frames to contact ground

<sup>3</sup>Short stops are available to carry shorter containers, contact your local representative for more details

<sup>4</sup>System weight includes hoist, applicable side mount oil tank & brackets, platform mount valve, 2 or 3 spools hydraulic valve, split light bars, standard inside control tower, and one crate. Cylinder type will impact system weight



### ROLL-OFF CABLE HOISTS



### HOOKLIFTS



### DEFENCE SOLUTIONS



### TRUCK-MOUNTED FORKLIFTS



### LIFT GATES



### KNUCKLEBOOM CRANES



**FOR ALL YOUR SALES AND SERVICE NEEDS SCAN THE QR CODE BELOW TO FIND YOUR REGIONAL SALES MANAGER.**

## BUILT TO PERFORM

Hiab (Nasdaq Helsinki: HIAB) is a leading provider of smart and sustainable on road load-handling solutions, committed to delivering the best customer experience every day with the most engaged people and partners. Hiab's premium equipment includes HIAB, EFFER and ARGOS loader cranes, MOFFETT and PRINCETON truck mounted forklifts, LOGLIFT forestry cranes, JONSERED recycling cranes, MULTILIFT skiploaders and hooklifts, GALFAB roll-off cable hoists, ZEPRO, DEL and WALTCO tail lifts, and the service brand HIPERFORM, a comprehensive suite of smart solutions that help maximise the life-cycle value of Hiab's equipment.

As the industry pioneer, Hiab continues to make on road load-handling smarter, safer and more sustainable to build a better tomorrow. Globally, Hiab is represented on every continent through its extensive network of 3,000 own and partner sales and service locations, enabling delivery to over 100 countries. The company's continuing operations sales in 2024 totalled approximately EUR 1.6 billion and it employs over 4,000 people. [www.hiabgroup.com](http://www.hiabgroup.com)



Hiab USA Inc  
12233 Williams Road  
Perrysburg, OH 43551 USA  
tel. 419 482 6000  
[www.hiab.com](http://www.hiab.com)

