

TECHNICAL SPECIFICATIONS
K-HIPRO 285



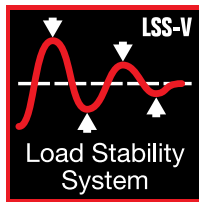
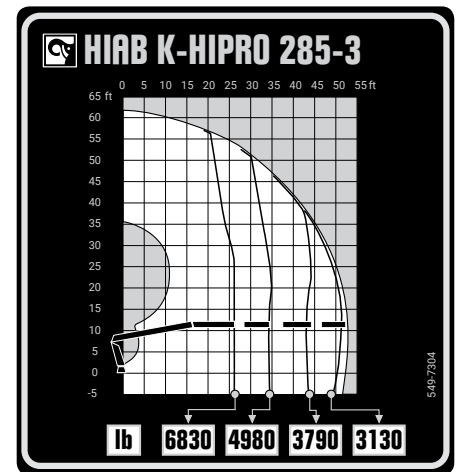
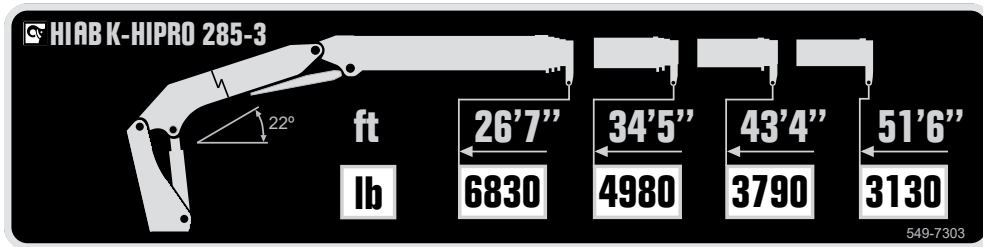
BUILT TO PERFORM



(800) 852-2331

HIAB 285K BASIC DATA

TECHNICAL DATA	285K-2 HIPRO	285K-3 HIPRO
Max. lifting capacity (ft-lbs)	195 430	188 050
Outreach, hydraulic extensions (ft)	44' 7"	52' 10"
Outreach, manual extensions (ft)	-	-
Outreach, with jib (ft)	-	-
Outreach / lifting capacity (ft-lbs)	26' 7" - 7 280 34' 5" - 5 420 43' 4" - 4 230 -	26' 7" - 6 830 34' 5" - 4 980 43' 4" - 3 790 51' 6" - 3 130
Outreach / lifting capacity, with jib (ft-lbs)	-	-
Slewing angle (°)	450	450
Height in folded position (in)	112	112
Width in folded position (in)	100	100
Installation space needed (in)	37	37
Weight, "standard" crane without stabilizers (lbs)	8 870	9 370
Weight, stabilizer equipment (lbs)	1 230	1 230
Weight, jib (lbs)	-	-



Disclaimer. Hiab cranes have been built to meet the highest standards of safety and service life and have been thoroughly tested. Strength calculations for this model have been carried out in accordance with EN13001 in fatigue class S2. Cargotec's certified Quality Assurance System complies with ISO 9001. Some of the items in our literature may be extra equipment. Certain applications may require an official permit. We reserve the right to change technical specifications without prior notice. Hiab cranes produced for EU-countries are CE marked and comply with the European Standard EN12999.

Hiab is the world's leading provider of on-road load handling equipment. Our high performance product range includes loader cranes, forestry and recycling cranes, demountables, truck mounted forklifts and tail lifts. We aim to set the industry benchmark for customer satisfaction by providing products and services that meet customer needs globally.

www.hiab.us.com
Hiab is part of Cargotec.
www.cargotec.com

Hiab USA Inc
12233 Williams Road
Perrysburg, OH 43551 USA
tel. +419 482 6000
fax. +419 482 6001

hiab.us.com



V2022.04.22