

## HIAB K-CRANE RANGE A POWERFUL SOLUTION

The HIAB K-HiPro Crane range has been specifically designed for handling drywall materials, while optimizing the truck's payload due to its light weight design. Delivering excellent lifting capacity and fast load-cycles with close-in reach and hydraulic forks ideal for this type of use.

With our industry leading, cutting edge HiPro technology, such as Crane Tip Control (CTC), Load Stability System (LSS-V), Variable Stability Logic (VSL), CombiDrive remote control, V200 Hydraulics and Space X4 control systems, crane performance is optimized and operation is simplified. Resulting in a faster, smoother, safer, more efficient and more durable crane.

Our special nDurance paint protection finish further contributes to making the crane look and last longer. Hiab K-Cranes provide you with premium quality and full control over the toughest jobs to be done.

### HIAB ADDRESSES YOUR INDUSTRY PAIN POINTS

Hiab loader cranes are stronger, tougher, and smarter, easily adapting to the ever changing needs of the material handling industries. With reliable support, intelligent services, and a growing number of connected solutions, Hiab loader cranes will maximize performance by offering the right solution for loading, unloading, or moving materials. Like no other truck mounted equipment provider, Hiab understands the specific requirements and realities of any industry and will help secure a safer, more efficient operation with reduced downtime while maximizing revenue.

**SAFETY** - Hiab's industry leading technology provides world class, industry leading safety features that keep operators safe and in control, minimizing risk to individuals or the environment. With the smart technology solutions of Hiab's loader cranes, human driven errors and unsafe operations are reduced.

**EFFICIENCY** - Hiab's advanced technology drives the performance of the equipment resulting in superior operation efficiencies. Hiab's class-leading products can not only be used by operators of different skill levels, but are also helpful with everchanging resources, supporting business efficiency and increasing productivity.

**DOWNTIME** - Hiab's renowned reliability combined with industry leading safety features and control systems is proven to reduce downtime, while our nationwide service network ensures that equipment is maintained with minimal oversight.

**TRAINING** - Training and educating operators takes time, but Hiab's advanced control systems and technology allows customers to manage their resources in the best way, whether the operator is highly experienced or a new employee without losing too much time.

**RELIABILITY** - Hiab loader cranes are the industry leaders in the area of reliability. Our premium engineering and cutting edge operation management features ensure optimum longevity and service life of your equipment. All backed up with the most comprehensive warranty in the market.

**REVENUE** - Hiab loader cranes provide many cost benefits that are ideal for businesses with repetitive, efficient operations. With a reliable design, quality materials, game changing smart technology, and industry specific innovation, investing in Hiab equipment provides a total package for any industry.

**HICONNECT™** Hiab HiConnect™ is a web-based dashboard that displays insights on equipment usage, location, time in operation, idle time, and productivity level. By enabling new insights, it helps you to further increase efficiency, productivity, and safety. HiConnect is the latest technology in terms of connectivity capabilities. Being able to remotely access data is key to maximizing your business with facts instead of assumptions. HiConnect maintains constant contact with all units, giving fleet managers the ability to stop unsafe behavior and usage before an incident happens. With the ability to view service history and plan upcoming services, your fleet has minimum downtime and increases daily efficiencies.

### FEATURES THAT OPTIMIZE OPERATIONS



The HiPro control system with Overload Protection (OLP) is standard on all HIAB K-cranes and brings an unprecedented level of **safety** to operations without reducing performance. When approaching an overload condition, the crane gives an audible and visual signal at 90% and will stop all radius increasing functions once full capacity has been reached.



**Automatic Speed Control (ASC)** reduces dynamic loading by progressively reducing the speed of the crane when the capacity is between 80% and 100%, preventing operators from performing **unsafe, abrupt movements**.



Hiab's **Variable Stability Limit system (VSL)** monitors the truck's stability by registering the extension of stabilizers and monitoring the pressures at each leg to determine the **maximum safe capacity** of the crane, allowing for higher capacities in situations where the legs are not able to be fully extended.



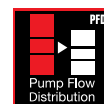
**Load Stability System (LSS-V)** provides smoother, more precise vertical boom motions. If an operator performs a hard stop while raising or lowering a load, the **LSS-V** system controls boom movement, minimizing the bouncing of the boom and load, while preventing load damage and unnecessary stress on the crane's components. This feature works in the background to smooth out boom functions allowing for easier placement of the load, making deliveries faster and more **efficient**. By controlling boom movement and minimizing the bounce of the boom, the structural stress is reduced, thus increasing the expected service life of the crane.



**Semi Automatic Folding (SAF)** simplifies the stowing process reducing it to a single-lever operation, protecting the crane and the truck from damage. It allows a single lever operation to fold and unfold the crane, while activating just one lever, which greatly **simplifies** this frequent routine operating task.



HiPro models, equipped with a **HIAB CombiDrive3** remote control increases **efficiency** by giving the operator freedom of movement to use the best possible position to view the load. It comes standard with a 100%, 70%, or 50% speed switch. This feature allows the operator to easily change the speed of the crane - especially useful when adjusting heavy loads at long outreaches. The **HIAB CombiDrive3** remote control is **reliable** and worry-free industrial component designed to last the life of the crane.



**Pump Flow Distribution (PFD)** provides smooth crane operations by equally dividing oil flow instead of taking the path of least resistance. **PFD** ensures that available oil flow is distributed evenly, making the crane operation very predictable, smooth, and precise.



**Hiab's nDurance™** paint is an anti-corrosion paint system using nano technology for the ultimate anti-corrosion coating, maintaining a rust-free **reliable** crane.



**Hiab ProCare™** is a proactive preventative maintenance service contract, designed to **maximize uptime** of all Hiab equipment by maintaining proper service intervals.

Our extensive stock of parts at our **Regional Distribution Center** ensures next-day delivery on almost all items, reducing **downtime** and **saving you money**. The same team you trust to deliver high-quality, premium products to your exact requirements can also be trusted to keep you moving.



Hiab's **Leading Warranty** exceeds the industry's standard terms because our products are designed to last longer and provide many years of **reliable** service.



Hiab's innovative design elements have the working **environment** in mind. HIAB cranes have a high performing control system, which saves on fuel consumption. Our

Valve 200, when combined with a variable displacement piston pump, provides the highest level of speed, precision, and efficiency available. On average, a HIAB crane with the V200 and variable pump will consume 325 gallons less diesel fuel per year compared to other models using fixed displacement pumps.

#### Our commitment to you

Hiab is the world's leading provider of on-road load handling equipment, intelligent services, smart and connected solutions. Hiab's class-leading load handling equipment includes HIAB, EFFER and ARGOS loader cranes, LOGLIFT and JONSERED forestry and recycling cranes, MOFFETT and PRINCETON truck mounted forklifts, MULTILIFT skiploaders and hooklifts, and tail lifts under the ZEPRO, DEL, and WALTCO brands. As the industry pioneer and with a proud 75 year history, Hiab is committed to be the preferred partner and solution provider to its customers and shape the future of intelligent load handling. [www.hiab.com](http://www.hiab.com) Hiab is part of Cargotec Corporation. [www.cargotec.com](http://www.cargotec.com)

For all your sales and service needs, call our nationwide hotline at 419.482.6000 to find your nearest Hiab USA branch.



# HIAB



Hiab USA Inc  
12233 Williams Road  
Perrysburg, OH 43051 USA  
tel. +419 482 6000  
[www.hiab.us.com](http://www.hiab.us.com)

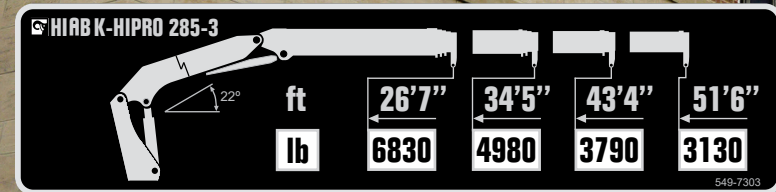
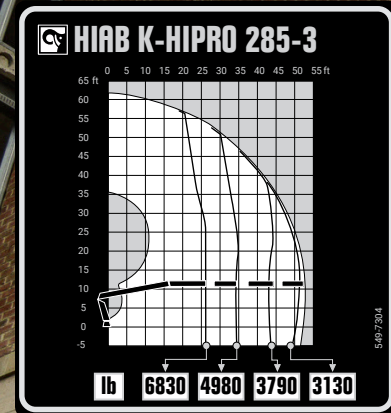
V2022.04.15



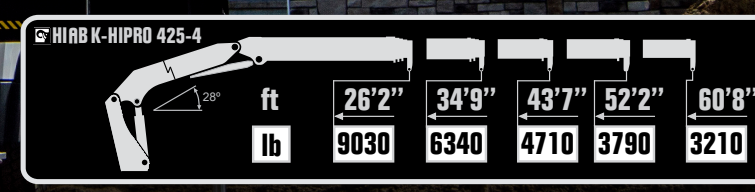
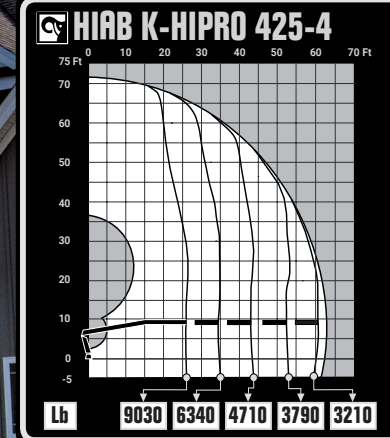
## PRODUCT RANGE

# HIAB K-CRANE RANGE

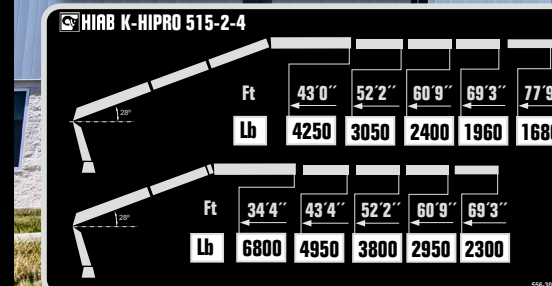
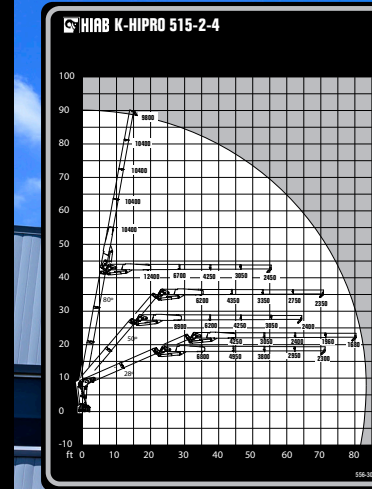
# K-HIPRO 285



# K-HIPRO 425



# K-HIPRO 515



TECHNICAL DATA	K-HIPRO 285-3
Max. lifting capacity (ft-lbs)	188 050
Outreach, hydraulic extensions (ft)	52' 10"
Outreach / lifting capacity (ft - lbs)	26' 7" - 6 830 34' 5" - 4 980 43' 4" - 3 790 51' 6" - 3 130
Slewing angle (°)	450
Weight, "standard" crane w/o stabilizers (lbs)	9 370
Weight, stabilizer equipment (lbs)	1 230
Control system	HiPro

TECHNICAL DATA	K-HIPRO 425-4
Max. lifting capacity (ft-lbs)	245 900
Outreach, hydraulic extensions (ft)	62' 8"
Outreach / lifting capacity (ft - lbs)	26' 2" - 9 030 34' 9" - 6 340 43' 7" - 4 710 52' 2" - 3 790 60' 8" - 3 210
Slewing angle (°)	460
Weight, "standard" crane w/o stabilizers (lbs)	10 540
Weight, stabilizer equipment (lbs)	1 380
Control system	HiPro

TECHNICAL DATA	K-HIPRO 515 2-4	
Max. lifting capacity (ft-lbs)	296 400	
Outreach, hydraulic extensions (ft)	82' 4"	
Outreach / lifting capacity (ft - lbs)	One inner boom ext.	Two inner boom ext.
	34' 4" - 6 800	43' 0" - 4 250
	43' 4" - 4 950	52' 2" - 3 050
	52' 2" - 3 800	60' 9" - 2 400
	60' 9" - 2 950	69' 3" - 1 960
69' 3" - 2 300	77' 9" - 1 680	
Slewing angle (°)	∞	
Weight, "standard" crane w/o stabilizers (lbs)	13 999	
Weight, stabilizer equipment (lbs)	1 742	
Control system	HiPro	