

TECHNICAL SPECIFICATIONS
HIAB XS 166L

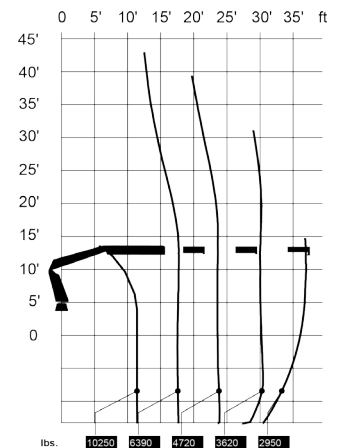
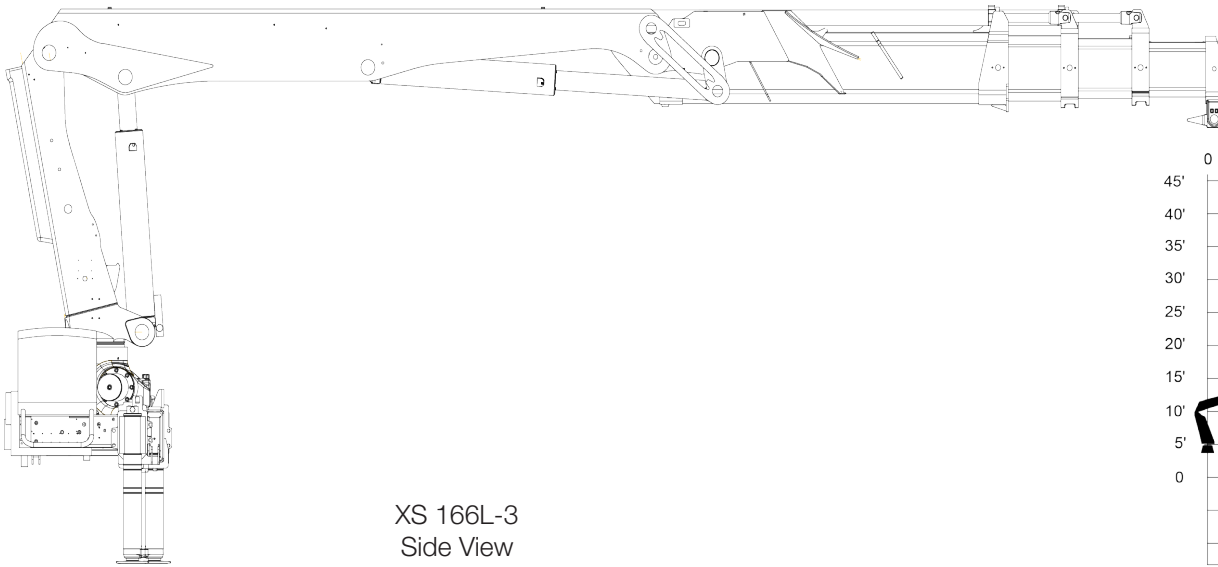


BUILT TO PERFORM



HIAB 166L BASIC DATA

TECHNICAL DATA	L-3 PRO	L-3 HIPRO
Max. lifting capacity (ft-lbs)	115 260	120 540
Outreach, hydraulic extensions (ft)	38' 9"	38' 9"
Outreach, manual extensions (ft)	61' 4"	61' 4"
Outreach, with jib (ft)	-	-
Outreach / lifting capacity (ft-lbs)	11' 10" - 9 810 18' 8" - 6 130 24' 7" - 4 500 31' 2" - 3 440 37' 9" - 2 820	11' 10" - 10 250 18' 8" - 6 390 24' 7" - 4 720 31' 2" - 3 620 37' 9" - 2 950
Outreach / lifting capacity (ft-lbs), manual extensions	44' 11" - 2 250 52' 10" - 1 760 60' 4" - 1 410	44' 11" - 2 340 52' 10" - 1 850 60' 4" - 1 540
Outreach / lifting capacity, with jib (ft-lbs)	-	-
Slewing angle (°)	406	406
Height in folded position (in)	-	-
Width in folded position (in)	-	-
Installation space needed (in)	-	-
Weight, "standard" crane without stabilizers (lbs)	4 590	4 670
Weight, stabilizer equipment (lbs)	560 - 860	560 - 860
Weight, jib (lbs)	-	-



Disclaimer. Hiab cranes have been built to meet the highest standards of safety and service life and have been thoroughly tested. Strength calculations for this model have been carried out in accordance with EN13001 in fatigue class S2. Cargotec's certified Quality Assurance System complies with ISO 9001. Some of the items in our literature may be extra equipment. Certain applications may require an official permit. We reserve the right to change technical specifications without prior notice. Hiab cranes produced for EU-countries are CE marked and comply with the European Standard EN12999.

Hiab is the world's leading provider of on-road load handling equipment. Our high performance product range includes loader cranes, forestry and recycling cranes, demountables, truck mounted forklifts and tail lifts. We aim to set the industry benchmark for customer satisfaction by providing products and services that meet customer needs globally.

www.hiab.us.com
Hiab is part of Cargotec.
www.cargotec.com

Hiab USA Inc
12233 Williams Road
Perrysburg, OH 43551 USA
tel. +419 482 6000
fax. +419 482 6001



V2016.11.02