

TECHNICAL SPECIFICATIONS
HIAB X-HIDUO 298

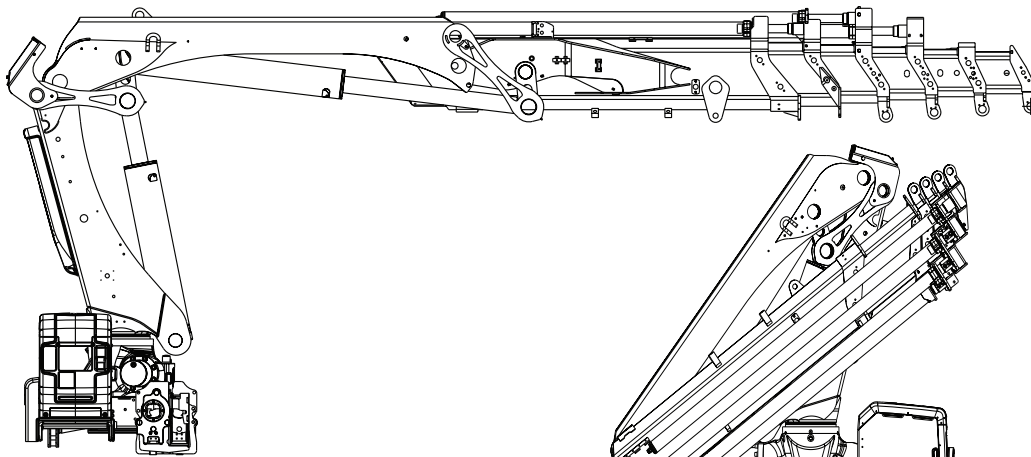


BUILT TO PERFORM



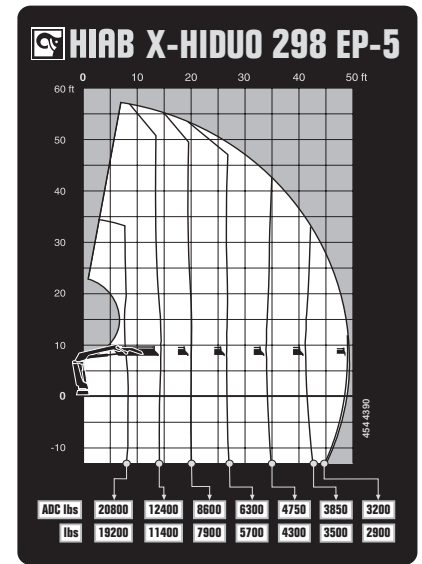
HIAB X-HIDUO 298 BASIC DATA

TECHNICAL DATA	EP-3	EP-5	E-6	E-8
Max. lifting capacity (ft-lbs)	188 050	181 470	174 810	168 150
Outreach, hydraulic extensions (ft)	33' 10"	49' 6"	53' 2"	68' 11"
Outreach / lifting capacity (ft-lbs)	8' 6" - 21 380 14' 1" - 13 450 19' 8" - 9 480 26' 3" - 6 940 33' 6" - 5 470 - - -	8' 6" - 20 720 14' 9" - 12 350 20' 4" - 8 600 26' 11" - 6 260 34' 1" - 4 760 41' 8" - 3 840 49' 3" - 3 220 -	8' 2" - 20 720 14' 9" - 11 680 20' 0" - 8 270 25' 11" - 6 040 32' 2" - 4 590 38' 9" - 3 660 45' 7" - 3 000 52' 10" - 2 560 -	8' 2" - 20 060 15' 5" - 10 910 20' 8" - 7 500 26' 7" - 5 340 32' 10" - 3 970 39' 4" - 3 040 46' 3" - 2 380 61' 0" - 1 680 68' 7" - 1 460
Slewing angle (°)	420	420	420	420
Height in folded position (in)	94	94	95	95
Width in folded position (in)	98	99	99	99
Installation space needed (in)	46	46	48	48
Weight, "standard" crane without stabilizers (lbs)	6 260	6 940	7 540	8 160
Weight, stabilizer equipment (lbs)	840 - 1 030	840 - 1 030	840 - 1 030	840 - 1 030



X-HiDuo 298 EP-5
Side View

X-HiDuo 298 EP-5
Front View



Disclaimer. Hiab cranes have been built to meet the highest standards of safety and service life and have been thoroughly tested. Strength calculations for this model have been carried out in accordance with EN13001 in fatigue class S2. Cargotec's certified Quality Assurance System complies with ISO 9001. Some of the items in our literature may be extra equipment. Certain applications may require an official permit. We reserve the right to change technical specifications without prior notice. Hiab cranes produced for EU-countries are CE marked and comply with the European Standard EN12999.

Hiab is the world's leading provider of on-road load handling equipment. Customer satisfaction is the first priority for us. Hiab's product range includes HIAB loader cranes, JONSERED recycling and forestry cranes, LOGLIFT forestry cranes, MOFFETT truck mounted forklifts, and MULTILIFT demountables, as well as DEL, WALTCO, and ZEPRO tail lifts.

www.hiab.us.com
Hiab is part of Cargotec.
www.cargotec.com

Hiab USA Inc
12233 Williams Road
Perrysburg, OH 43551 USA
tel. 419 482 6000
fax. 419 482 6001

