



MULTILIFT



**BUILT FOR BRITAIN.
READY FOR ANYTHING.**

THE ALL NEW MULTILIFT FUTURA

MADE FOR THE TOUGHEST JOBS. PREPARED FOR ALL CONDITIONS.

The MULTILIFT Futura range is a new generation of skiploaders designed to give you more payload and performance. With smart construction, fuel-saving design, and features that slash emissions and simplify service, it's easy to see why Futura is the future of skip handling. Whether you're operating in tight urban spaces or heavy-duty conditions, there's a Futura for the job.

MULTILIFT FUTURA 8

**Small in size.
Big on performance.**

The compact skiploader built for confined city streets. With EvoLight™ construction, Futura 8 delivers more payload, lower fuel use, and reduced emissions, without sacrificing strength.

MULTILIFT FUTURA 12

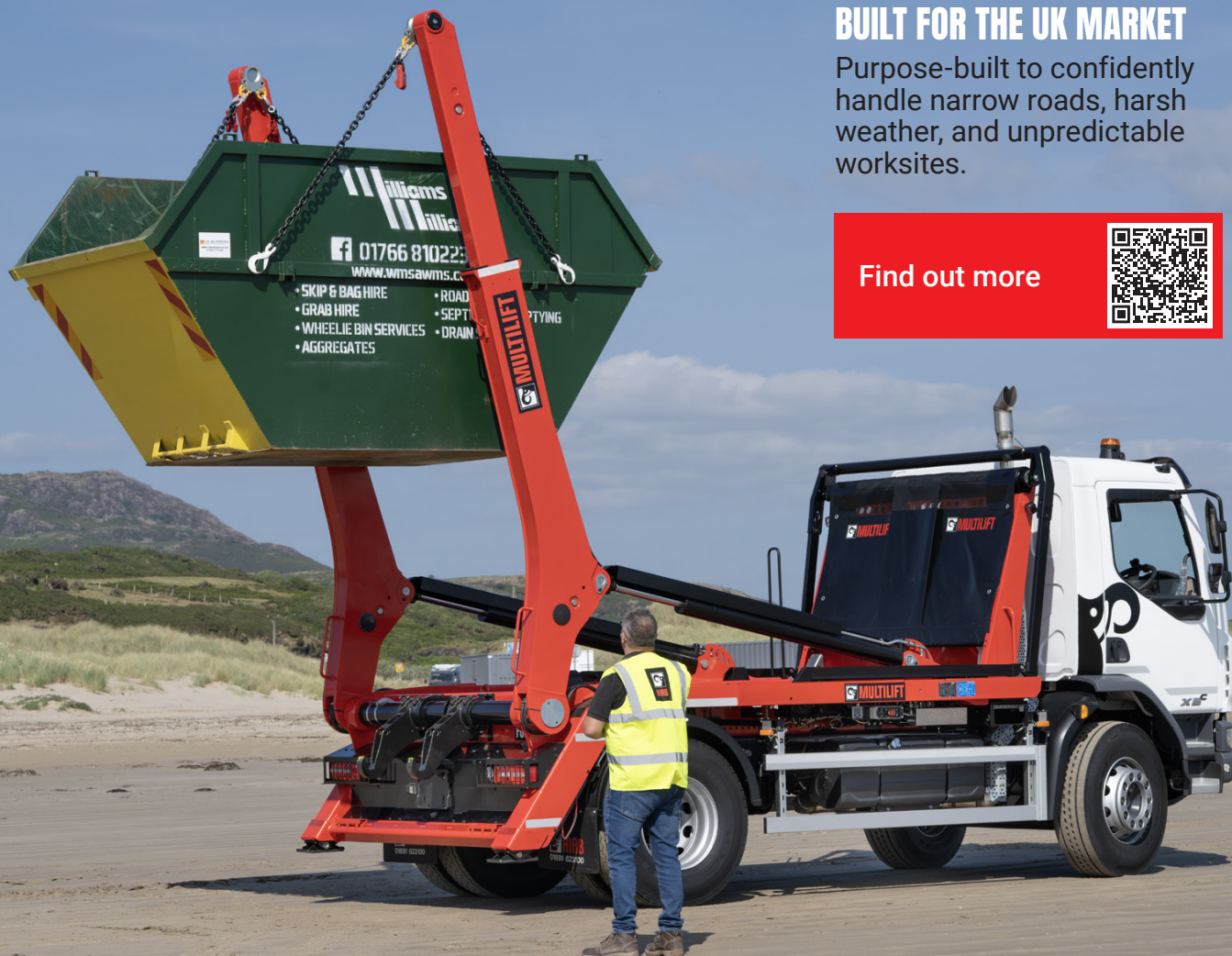
**Power and flexibility
in perfect combination**

Smart, versatile, and packed with design innovations, Futura 12 combines top performance with fast, easy, and safe operation.

MULTILIFT FUTURA 18

**Pure power and
performance**

The heavyweight of the family. Lifts up to 18 tonnes with fewer trips, lower emissions, and the same smart handling you expect from a Futura.



BUILT FOR THE UK MARKET

Purpose-built to confidently handle narrow roads, harsh weather, and unpredictable worksites.

[Find out more](#)



NOW EVEN STRONGER

The latest Futura is made for the toughest jobs on British ground. We've taken everything that made Futura smart and made it even stronger.



Improved main ram covers and steel plates

Enhanced protection where it matters most. Built to take a beating, job after job.



Redesigned rear end

Strengthened for heavy-duty loads and rougher terrain. Keeps performance high and downtime low.



Upgraded cabin guard for increased safety

Because operator safety is non-negotiable. Now, there is even stronger protection for every shift.



Thicker handles

Designed for better grip and easier handling, especially in wet, muddy, or cold conditions.



INNOVATIONS TO HELP YOU PERFORM

MULTILIFT Futura combines good looks, street smarts and forward thinking. Leading the way in skiphandling, the MULTILIFT Futura features a long list of design innovations – many you can see and many more behind the scenes. All ensuring the highest durability, professional appearance, top performance and safe, easy, fast operation. After all, a skiploader should be a workhorse – lifting and transporting containers rather than spending time in the repair shop. Here are just a few examples of leading-edge advancements in MULTILIFT Futura.

FlexControl™ offers freedom of control

FlexControl™ gives you freedom to customise your skiploader – paying only for what you need when you need it, as the modular system makes retrofitting easy. Control options even include the possibility to have outside, in-cab, radio remote controls, or a customised combination.

Other smart options include a dynamic on-board weighing system, which weighs the container during the loading movement, and smart-drive for telescopic arms and stabiliser legs. With smart-drive, the RH/LH sides can operate simultaneously or independently, keeping constant speed regardless of how and to which direction you drive the functions.

- PLC control system with CAN bus interface
- In-cab, radio, outside controls or combo
- Dynamic on-board weighing system
- Two-speed comfort drive for main arms
- Fast-speed offload with safety interlock
- Smart-drive for telescopic arms and stabiliser legs



SwanNeck™ increases reach

With the distinctive MULTILIFT SwanNeck™ design, you can go further than the competition. Literally. The precisely calculated curve in combination with the extra-long telescopic arms increases the skiploader's reach in container handling while maintaining perfect stability – even when lifting over fences and obstacles, or from an unaligned angle.



An upgraded cabin guard

FlexControl™

EvoLight™ construction

SwanNeck™



EvoLight™ construction means more payload

MULTILIFT Futura is light, lean and tough. The completely redesigned lightweight steel construction, gives you 300–500 kg more legal payload without compromising strength. That means you can haul more while saving fuel and reducing CO₂ emissions. And it also helps save wear and tear on city streets.

- Lightweight, high-strength steel construction
- Optimised cylinders
- 300–500 kg more legal payload
- Steel castings to strengthen and streamline construction





SkipTop™ covers any load — automatic, fast and safe

With just the touch of a button, SkipTop™ makes it automatic, fast and safe to cover any load. With no need to climb up and wrestle with covers and ropes, SkipTop™ saves your time and your back. Not to mention setting higher safety standards on the road.

- Bolt-on interface
- Safe to operate with radio controls

Long lifetime and easy service

- Service-friendly design to optimise total cost of ownership
- Service points easily accessible
- Vast assortment of retrofit options
- Proven MULTILIFT control system
- Hydraulic design concept based on hoses for easy serviceability

Built-in quality

- Pre-painted components
- Optional zinc primer for main frames
- All components from MULTILIFT preferred and approved suppliers
- FEM analysis and strain gauge tests
- Frame, swing arms and telescopic arms fulfil tight MULTILIFT quality requirements

Quicker installation

- Fast Bolt-On concept
- Integrated rear light brackets
- Integrated and certified URB
- Increased space for mudguards and other components on chassis sides
- Modern and convenient CAN bus installation for control system

SafetyPlus™ boosts safety for both operator and surroundings

Safety, both for the operator and surroundings, is paramount for MULTILIFT. The new-generation skip-loader adds leading-edge safety innovations, such as hydraulic side stops, hydraulic container lock and precise controls combined with safety interlocks, to help eliminate needless risks in skiphandling.

- Rated lashing points
- Hydraulic side stops
- Hydraulic rear lock
- Manually adjustable and locked container side and front stops
- Pneumatic safety latch for tipping hook





SPECIFICATIONS AT A GLANCE

	Futura 8		Futura 12			Futura 18		
Vehicle type	2 axle		2-axle			3-axle		
GVW of the vehicle (t)	12 (15)		18			26		
Capacity (t)	8		12			18		
Equipment length*	38	41	38	41	44	45	48	51
System weight (kg)**	1900		2600			3300		
Max. operating pressure (MPa)	30		30			30		
Recommended oil flow (l/min)	55		80			100		

* Equipment length with pre-mounted oil tank

** System weight of basic unit without additional options, cabin guard, extension







LB-FUTURA-EN-EU_250625

BUILT TO PERFORM

Hiab is a leading provider of smart and sustainable load handling solutions. We are committed to delivering the best customer experience every day with the most engaged people and partners. Hiab's premium equipment includes HIAB, EFFER and ARGOS loader cranes, MOFFETT and PRINCETON truck mounted forklifts, LOGLIFT forestry cranes, JONSERED recycling cranes, MULTILIFT skiploaders and hooklifts, GALFAB roll-off cable hoists, tail lifts under the ZEPRO, DEL and WALTCO brands, and HIPERFORM, a suite of smart solutions. As the industry pioneer, Hiab continues to make load handling smarter, safer and more sustainable to build a better tomorrow. Hiab is part of Cargotec Corporation.

www.hiab.com

Hiab is part of Cargotec Corporation. Cargotec (Nasdaq Helsinki: CGCBV) sales in 2023 totalled approximately EUR 4.6 billion and it employs around 11,400 people.

www.cargotec.com

