



**MULTILIFT**



**GALFAB**

**MULTILIFT / GALFAB BUYER'S GUIDE**  
**CHOOSING THE RIGHT SOLUTION**



# HOOK OR CABLE?

In the world of logistics, time is money, and every second counts. That's why in 1949, the first cable hoist was invented by the Terho brothers in Finland. The cable hoist allowed for faster loading and unloading of cargo, increasing efficiency and productivity.

This method to move loads from place to place was the world standard until 1998 when the Multilift Hooklift surpassed the cable hoist as the world leader in container movers.

The most common roll-off truck in North America is the cable hoist. Utilizing a reeving system of hydraulic cylinders, a steel cable is attached to the container's end to pull the container onto the tilt frame. Many variations of the cable hoist exist to meet the environment they are used in and the chassis specifications desired. From varying frame strength and design to layouts that include the number of axles and fuel type. As well as the container type/style.

In most parts of the world, the hook has supplanted the cable hoist as the leader in container management. The hook lift uses an engineered arm to articulate and grab the end of the container that then reverses the movement to lift and pull the container on the truck. The operator does not need to exit the cab to be potentially placed in a compromising position or use any physical exertion beyond controlling a joystick. Because of the precision of the hook lift, the container can be positioned exactly where it is needed. Just like the cable hoist, the hook lift has many variations depending on the application and chassis specifications. However, the hook lift is more versatile with applications in nearly every vocational use from equipment delivery & municipal services to landscaping & beyond.

As the logistics industry continues to evolve, one thing remains constant - time is money. GALFAB and MULTILIFT understands this better than anyone. With a long and storied history of innovation and excellence, the company remains at the forefront of the industry, helping businesses around the world save time and money, one lift at a time.



THIS DRAWING IS THE EXCLUSIVE PROPERTY OF Galfab, Inc.  
AND IS NOT TO BE USED IN ANY WAY DETRIMENTAL TO Galfab, Inc.





# GALFAB ADVANTAGES



## OUTBOARD SUPPORTED ROLLERS

- Greaseable roller shaft is removable with two bolts for ease of replacement and maintenance
- Fast replacement means less downtime and higher efficiency



## LOW LOADING ANGLE

- Extendible tail hoist series provides a loading angle that is great for areas with low overhead clearance and loading containers with loose debris



## AUTO-FOLD DOT BUMPER

- Bumper folds forward, reducing change of bending or hang-ups
- Fold forward design to reduce the risk of picking debris



## AUXILIARY FOLD DOWN STOPS

- Allow for better weight distribution for short containers. More than one set can be used for containers of varying lengths



## CONTAINER SECUREMENT

- Our patented securement system is the ultimate in container securement
- Use truck's air system to operate



## FENDERS

- Poly fenders offer light weight and resistance to bending
- Available for tandem, tri-axle or quad axle configurations

# MULTILIFT ADVANTAGES



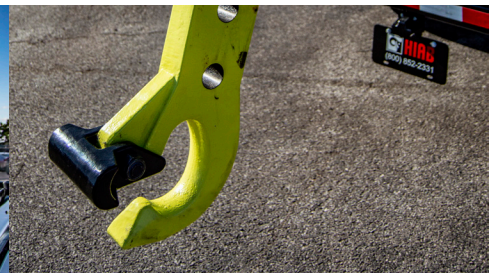
## ELECTRIC, IN-CAB CONTROLS

- Standard feature
- Allows operator to control movement from within the truck



## DUAL PIVOT DESIGN

- Offers smoother loading and unloading, as well as true dumping capabilities



## HOOK SAFETY LATCH

- Ensures that bale bar is secure at all times



## BODY-UP WARNING

- Alerts operator if body is not fully seated



## IP67 RATED WIRING AND SENSORS

- Weatherproof and submersible



## ZINC COATING

- Anti-corrosion finish









MODEL FAMILY	MODEL	MAX CAPACITY (lb)	CA (in)	CA WITH TARP (in)	LENGTH (in)	MAX TIPPING ANGLE (°)	CONTAINER LENGTH (ft)	WEIGHT (lb)
OR60	OR60174T121	60 000	174	186	23' 3"	48	18' - 22'	7 225
OR60	OR60174S072	60 000	174	186	23' 3"	48	18' - 22'	7 550
OR60	OR60174S072R	60 000	174	186	23' 3"	48	18' - 22'	7 550
OR60	OR60194T121	60 000	194	206	24' 11"	48	20' - 24'	8 075
OR60	OR60194S072	60 000	194	206	24' 11"	48	20' - 24'	7 850
OR60	OR60194S072R	60 000	194	206	24' 11"	48	20' - 24'	7 850
OR75	OR75174T121	75 000	174	186	23' 3"	48	18' - 22'	7 350
OR75	OR75174S072R	75 000	174	186	23' 3"	48	18' - 22'	7 850
OR75	OR75174S072F	75 000	174	186	23' 3"	48	18' - 22'	7 550
OR75	OR75194T121	75 000	194	206	24' 11"	48	20' - 24'	8 075
OR75	OR75194S072R	75 000	194	206	24' 11"	48	20' - 24'	7 850
OR75	OR75194S072F	75 000	194	206	24' 11"	48	20' - 24'	7 850
NOR60	NOR60174S072	60 000	174	186	23' 3"	48	18' - 22'	7 550
NOR60	NOR60174S072R	60 000	174	186	23' 3"	48	18' - 22'	7 550
NOR60	NOR60174T121	60 000	174	186	23' 3"	48	18' - 22'	7 225
NOR60	NOR60194S072	60 000	194	206	24' 11"	48	20' - 24'	7 850
NOR75	NOR75174S072	75 000	174	186	23' 3"	48	18' - 22'	7 550
NOR75	NOR75174S072R	75 000	174	186	23' 3"	48	18' - 22'	7 550
NOR75	NOR75174T121	75 000	174	186	23' 3"	48	18' - 22'	7 350
NOR75	NOR75194S072F	75 000	194	206	24' 11"	48	20' - 24'	7 850
AF60	AFOR60174S069	60 000	178	190	24' 4"	50	18' - 22'	7 400
AF60	AFOR60194S069	60 000	198	210	26'	50	18' - 22'	7 550
AF75	AFOR75174S069	75 000	178	190	24' 4"	50	18' - 22'	7 400
AF75	AFOR75194S069	75 000	198	210	26'	50	18' - 22'	7 550



MODEL	MAX. CAPACITY (LB)	OPTIMUM BODY LENGTHS (FT)	MAX. TIPPING ANGLE (°)	HOOK HEIGHT (IN)	CA / CT RANGE (IN)	MIN. GVWR (LB)	FRAME HEIGHT (IN)	CLEAR FRAME (IN)	WEIGHT (LB)
XR5S-3050	12,000	10 - 12	50	36	84 - 96	19,500	UP TO 36	138	1,345
XR5S-3250	12,000	11 - 13	50	36	102 - 110	19,500	UP TO 36	148	1,480
XR5S-3650	12,000	12 - 14	50	36	116 - 124	19,500	UP TO 36	160	1,565
XR8S-3250	18,000	11 - 13	50	36 / 54	102 - 110	22,000	UP TO 39	144	2,160
XR8S-3650	18,000	12 - 14	50	36 / 54	114 - 122	22,000	UP TO 39	158	2,225
XR8S-4150	18,000	14 - 16	50	36 / 54	132 - 140	22,000	UP TO 39	176	2,290
XR10S-3250	22,000	11 - 13	50	54 / 62	102 - 110	33,000	UP TO 40	146	2,180
XR10S-3650	22,000	12 - 14	50	54 / 62	116 - 124	33,000	UP TO 40	160	2,290
XR10S-4150	22,000	14 - 16	50	54 / 62	134 - 142	33,000	UP TO 40	178	2,360
XR10S-5100	22,000	17 - 19	50	54 / 62	174 - 182	33,000	UP TO 40	218	2,535
OPT15S-4300	30,000	14 - 16	50	54 / 62	152 CA / 130 CT	35,000	UP TO 44	188	3,585
OPT15S-4600	30,000	15 - 17	50	54 / 62	162 CA / 140 CT	35,000	UP TO 44	198	3,650
OPT15S-5600	30,000	18 - 20	50	54 / 62	200 CA / 176 CT	35,000	UP TO 44	236	4,100
ULT16S-4600	40,000	15 - 17	50	54 / 62	130 - 140	50,000	UP TO 45	198	3,830
ULT16S-5300	40,000	18 - 20	50	54 / 62	164 - 174	50,000	UP TO 45	228	4,225
ULT16S-5900	40,000	20 - 22	50	54 / 62	180 - 190	50,000	UP TO 45	248	4,380
ULT21S-5300 (PF)	50,000	18 - 20	50	54 / 62	166 - 176	60,000	UP TO 45	236	5,435
ULT21S-5900 (PF)	50,000	20 - 22	50	54 / 62	184 - 194	60,000	UP TO 45	252	5,565
ULT26S-5900 (PF)	60,000	20 - 22	50	54 / 62	184 - 194	70,000	UP TO 45	252	6,020
ULT30S-5900 (PF)	72,000	20 - 22	50	62	184 - 194	80,000	UP TO 45	252	6,270

**Tarp Installation** - Remember to add 12" to the CA / CT and Clear Frame measurements listed above for best weight distribution. Basic sales drawings for each hooklift model are available upon request (intended for illustration purposes only). Custom weight distributions may also be requested (allow 2-3 weeks). **PF** = performance package available. The performance package is optional, consists of fast tipping (22 sec.), fast lowering (22 sec.), fast off-load (25 sec.) and auto sequence (one touch loading and unloading).

STANDARD PRODUCT FEATURES	XR SERIES	OPT SERIES	ULT SERIES
Electric Cab Control	X	X	X
High Tensile Steel Construction	X	X	X
Dual Pivot Design (true dumping)	X	X	X
Hook Safety Latch	X	X	X
Body Up Warning Light	X	X	X
Sensors / Wiring - IP67	X	X	X
Zinc Primer / Top-Coat Black	X	X	X
2-Speed / PLC Controller (smart system)			X
Soft Lowering (dump cycle)		X	X
Friction Relief (loading / unloading)			X
Float Function (rough road assist)		X	X
Pull Limiter (manage short bodies)		X	X
Solid Cast Inserts (critical stress points)		X	X
Product Warranty (all parts / structural)	2-yr / 3-yr	2-yr / 3-yr	2-yr / 5-yr



# MULTILIFT







# HIAB

## KNUCKLEBOOM CRANES



# MOFFETT

## TRUCK-MOUNTED FORKLIFTS



# WALTCO

## LIFT GATES



### Our commitment to you

HIAB is the world's leading provider of on-road load handling equipment, intelligent services, smart and connected solutions. HIAB's class-leading load handling equipment includes HIAB, EFFER and ARGOS loader cranes, LOGLIFT and JONSERED forestry and recycling cranes, MOFFETT and PRINCETON truck mounted forklifts, MULTILIFT and GALFAB skiploaders and hooklifts, and tail lifts under the ZEPRO, DEL, and WALTCO brands. As the industry pioneer and with a proud 75 year history, HIAB is committed to be the preferred partner and solution provider to its customers and shape the future of intelligent load handling. [www.HIAB.com](http://www.HIAB.com) HIAB is part of Cargotec Corporation. [www.cargotec.com](http://www.cargotec.com)

**For all your sales and service needs, call our nationwide hotline at 419.482.6000 to find your nearest HIAB USA branch.**



# HIAB



HIAB USA Inc  
12233 Williams Road  
Perrysburg, OH 43551 USA  
tel. +419 482 6000  
[www.HIAB.us.com](http://www.HIAB.us.com)

