

TECHNICAL SPECIFICATIONS
LOGLIFT 82Z



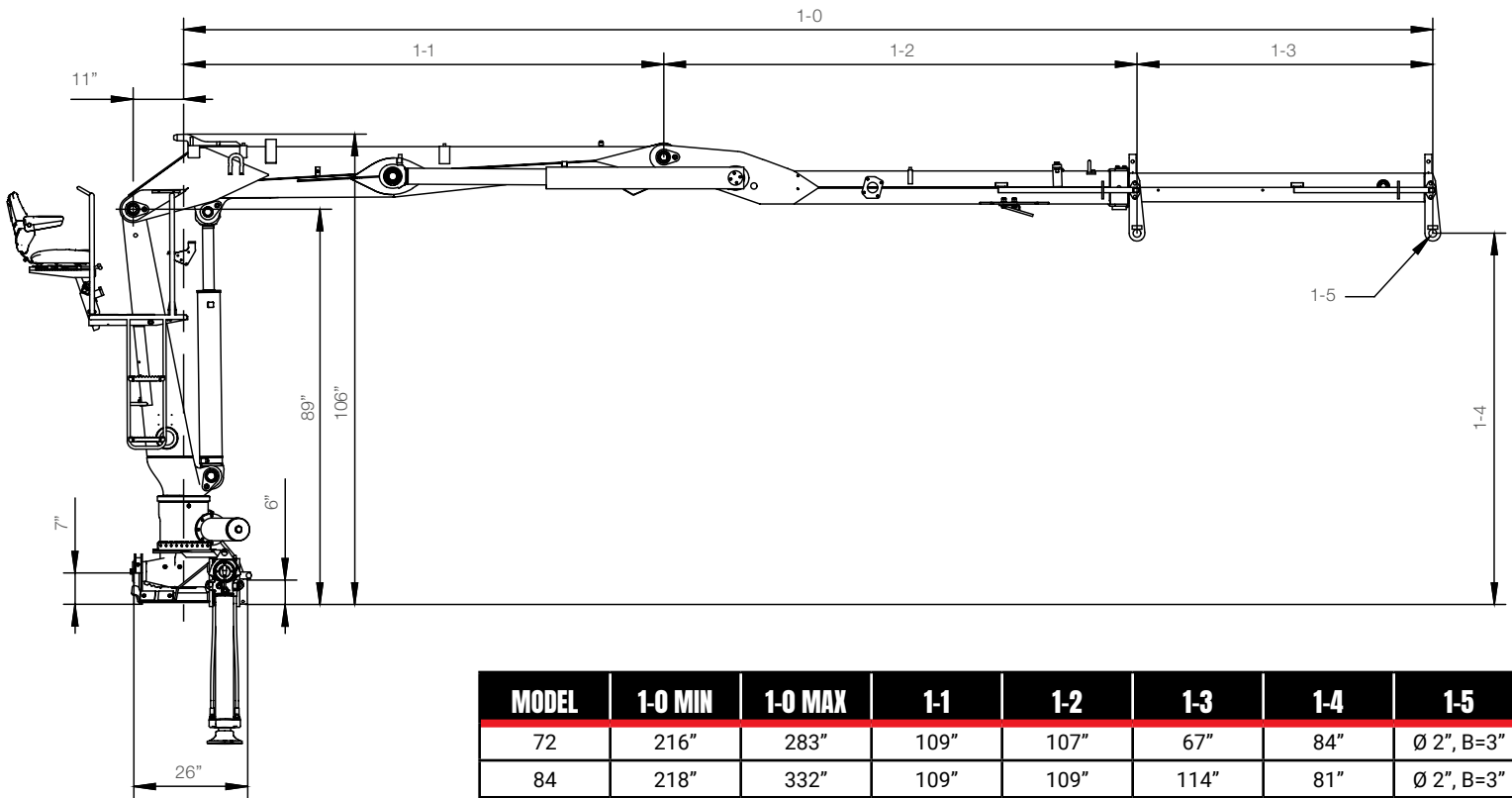
HIAB

BUILT TO PERFORM

LOGLIFT 82Z BASIC DATA

TECHNICAL DATA	F82Z 72	F82Z 84
Max. lifting capacity (lb-ft)	60 520	56 830
Outreach, hydraulic extensions (ft)	23' 7"	27' 6"
Outreach / lifting capacity (ft - lb)	10' - 4 250	10' - 3 950
	13' - 4 010	13' - 3 750
	16' - 3 570	16' - 3 310
	20' - 3 040	20' - 2 820
	23' - 2 650	23' - 2 380
	-	26' - 2 030
Slewing system	Single	
Slewing angle (°)	415	
Slewing torque, gross (lb-ft)	13 430	
Max. working pressure (psi)	3 410	
Recommended oil flow - fixed pump (gal/min), 2-pump	2 x 13-16	
Weight (lb)	3 680	3 680

Side View



Disclaimer. Hiab cranes have been built to meet the highest standards of safety and service life and have been thoroughly tested. Strength calculations for this model have been carried out in accordance with EN13001 in fatigue class S2. Cargotec's certified Quality Assurance System complies with ISO 9001. Some of the items in our literature may be extra equipment. Certain applications may require an official permit. We reserve the right to change technical specifications without prior notice. Hiab cranes produced for EU-countries are CE marked and comply with the European Standard EN12999.

Hiab is the world's leading provider of on-road load handling equipment. Customer satisfaction is the first priority for us. Hiab's product range includes HIAB loader cranes, JONSERED recycling and forestry cranes, LOGLIFT forestry cranes, MOFFETT truck mounted forklifts, and MULTILIFT demountables, as well as DEL, WALTCO, and ZEPRO tail lifts.

www.hiab.us.com
Hiab is part of Cargotec.
www.cargotec.com

hiab.us.com

Hiab USA Inc
12233 Williams Road
Perrysburg, OH 43551 USA
tel. 419 482 6000
fax. 419 482 6001



V2022.08.15

